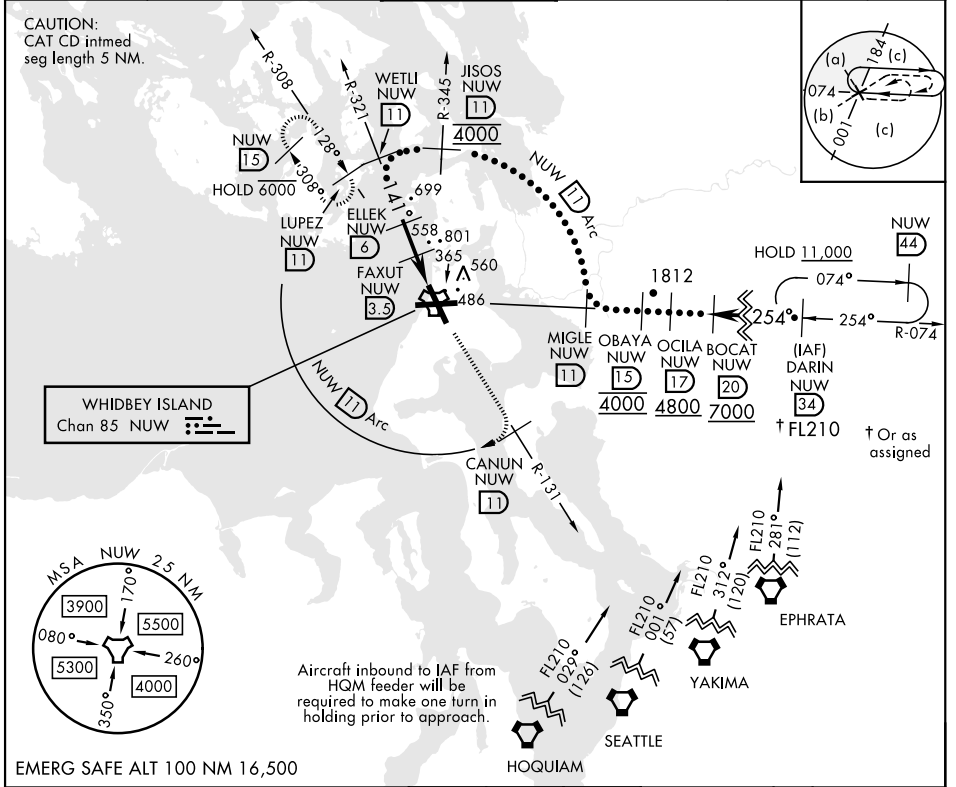


# HI-TACAN Z RWY 14

TACAN NUW Chan <b>85</b>	APCH CRS <b>141°</b>	Rwy ldg TDZE <b>8000</b> <b>39</b> Arpt Elev <b>47</b>	AL-451 [USN]	WHIDBEY ISLAND NAS (AULT FLD) (KNUW)
--------------------------	----------------------	--	--------------	--------------------------------------

ALS-F-2
MISSED APPROACH: Climb to 4000 via NUW TACAN R-131 to CANUN, then arc SW of NUW TACAN via 11 DME Arc to LUPEZ and hold.

ATIS <b>134.15 281.5</b>	WHIDBEY APP CON <b>120.7 270.8</b> (E) <b>118.2 285.65</b> (W)	WHIDBEY TOWER <b>127.9 340.2</b>	GND CON <b>121.75 336.4</b>	CLNC DEL <b>135.1 379.9</b>	ASR/PAR
--------------------------	---	----------------------------------	-----------------------------	-----------------------------	---------



<p>WETLI R-321 (11) 3000 → 141° → ELLEK (6) 1800 → 141° → FAXUT (3.3) 1020 → TACAN</p> <p>2.86° TCH 55</p>	<p>4000 NUW R-131 (11)</p> <p>CANUN NUW (11)</p> <p>NUW (11) Arc</p>	<p>ELEV 47</p> <p>141° to TACAN</p> <p>8000 x 200</p> <p>TWR 167</p>	<p>TDZE 39</p>
CATEGORY	C	D	E
S-14*	480-7/8	441 (500-7/8)	
CIRCLING	900-2 1/2 853 (900-2 1/2)	900-2 3/4 853 (900-2 3/4)	1200-3 1153 (1200-3)
<p>HIRL Rwy 7-25, 14-32 TDZL/CL Rwy 14</p>			

# HI-TACAN Z RWY 14

NW-1, 19 MAY 2022 to 16 JUN 2022

NW-1, 19 MAY 2022 to 16 JUN 2022