

OAK HARBOR, WASHINGTON

ILS or LOC/DME RWY 14

LOC/DME I-NUW 110.1 Chan 38	APCH CRS 137°	Rwy Idg 8000 TDZE 39 Arprt Elev 47
---	-------------------------	---

AL-451 [USN]

WHIDBEY ISLAND NAS (AULT FLD) (KNUW)

VOR, DME required.
 * When ALS inop, increase vis to 3/4 mile.
 ** When ALS inop, increase CAT AB vis to 1 mile;
 CAT CDE vis to 1 1/8 miles.

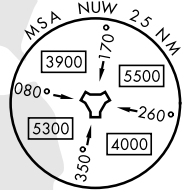
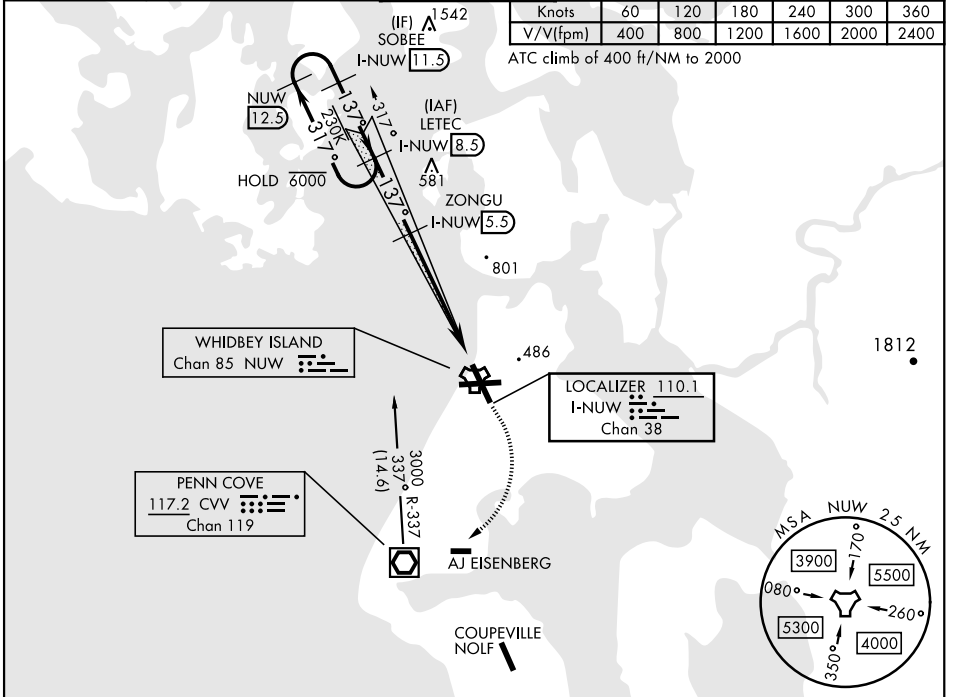


MISSED APPROACH: Climb to 2000 via hdg 137°, then climbing right turn to 3000, direct CVV VOR/DME, then via CVV R-337 to LETEC and hold.

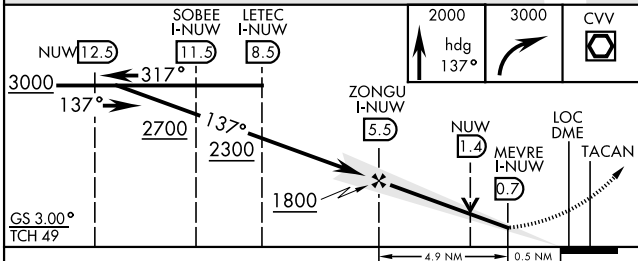
ATIS 134.15 281.5	WHIDBEY APP CON 120.7 270.8 (E) 118.2 285.65 (W)	WHIDBEY TOWER 127.9 340.2	GND CON 121.75 336.4	CLNC DEL 135.1 379.9	ASR/PAR
-----------------------------	--	-------------------------------------	--------------------------------	--------------------------------	---------

Knots	60	120	180	240	300	360
V/V(fpm)	400	800	1200	1600	2000	2400

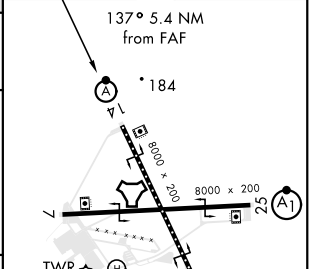
ATC climb of 400 ft/NM to 2000



EMERG SAFE ALT 100 NM 16,500



ELEV 47	TDZE 39
---------	---------



CATEGORY	A	B	C	D	E
S-ILS 14*	239-1/2		200 (200-1/2)		
S-LOC 14**	420-1/2	381 (400-1/2)	420-5/8		381 (400-5/8)
CIRCLING	700-1	800-1	900-2 1/2	900-2 3/4	1200-3
	653 (700-1)	753 (800-1)	853 (900-2 1/2)	853 (900-2 3/4)	1153 (1200-3)

HIRL Rwy 7-25, 14-32
 TDZL/CL Rwy 14

OAK HARBOR, WASHINGTON

48°21'N-122°39'W

WHIDBEY ISLAND NAS (AULT FLD) (KNUW)

Amdt 1 07OCT21

ILS or LOC/DME RWY 14

NW-1, 19 MAY 2022 to 16 JUN 2022

NW-1, 19 MAY 2022 to 16 JUN 2022