

OAK HARBOR, WASHINGTON

RNAV (GPS) RWY 32

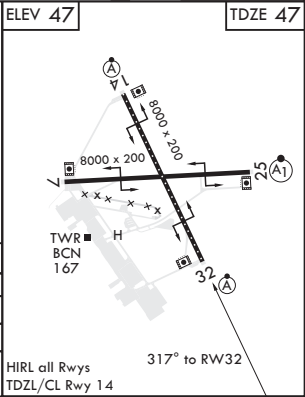
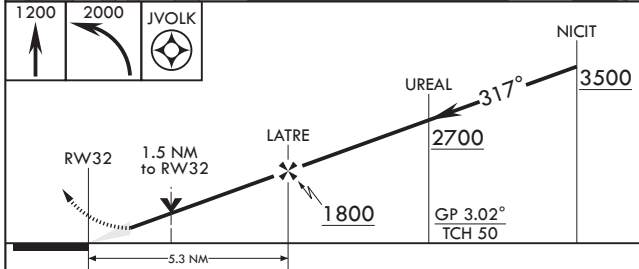
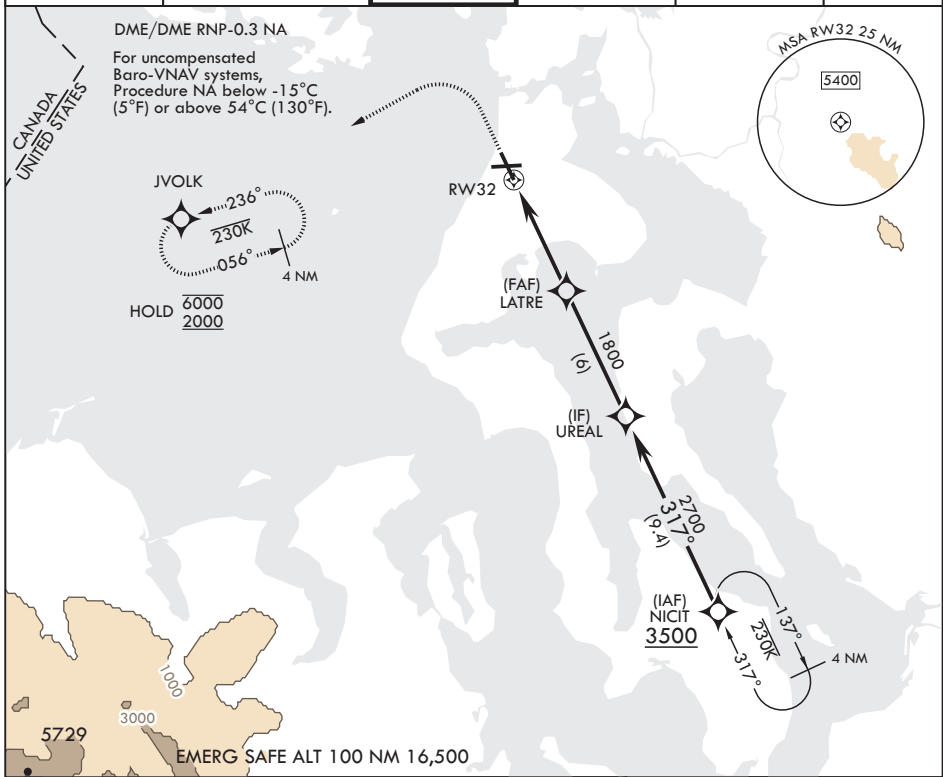
APCH CRS	Rwy Idg	8000
317°	TDZE	47
	Arpt Elev	47

AL-451 (USN)

WHIDBEY ISLAND NAS (AULT FLD) (KNUW)

▼ * When ALS inop, increase vis to 1 3/8 miles. ** When ALS inop, increase CAT AB vis to 1 mile, CAT CD vis to 1 1/2 miles.	ALSf-2	MISSED APPROACH: Climb to 1200 then climbing left turn to 2000 direct JVOLK and hold.

ATIS 134.15 281.5	APP CON/DEP CON 118.2 285.65 (W) 120.7 270.8 (E)	TOWER 127.9 340.2	GND CON 121.75 336.4	CLNC DEL 135.1 379.9	ASR/PAR
-----------------------------	--	-----------------------------	--------------------------------	--------------------------------	---------



CATEGORY	A	B	C	D
LNAV/VNAV DA*	492-7/8		445	(500-7/8)
LNAV MDA**	580-1/2	533 (600-1/2)	580-1	533 (600-1)
☐ CIRCLING	700-1 653 (700-1)	800-1 753 (800-1)	900-2 1/2 853 (900-2 1/2)	900-2 3/4 853 (900-2 3/4)

HIRL all Rwys TDZL/CL Rwy 14

OAK HARBOR, WASHINGTON

48°21'N - 122°39'W

WHIDBEY ISLAND NAS (AULT FLD) (KNUW)

RNAV (GPS) RWY 32

Amdt 1 21MAY20

NW-1, 19 MAY 2022 to 16 JUN 2022

NW-1, 19 MAY 2022 to 16 JUN 2022