

OAK HARBOR, WASHINGTON

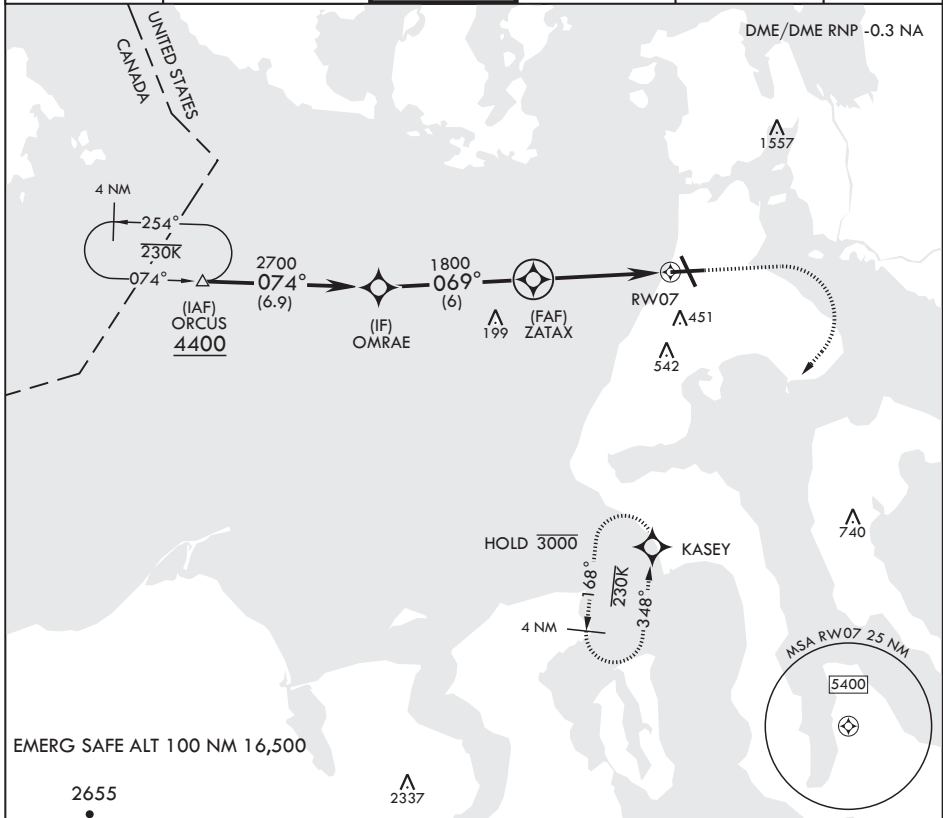
# RNAV (GPS) RWY 7

APCH CRS	Rwy Idg	8000
069°	TDZE	25
	Arprt Elev	47

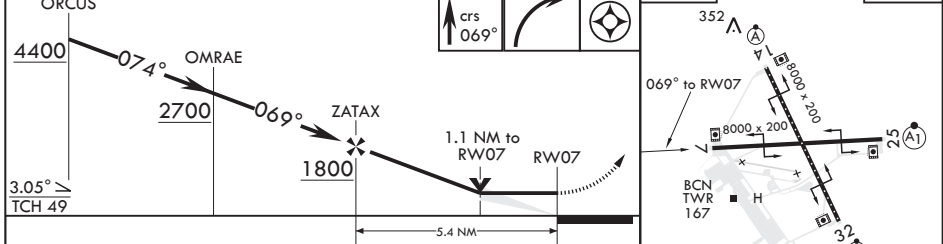
AL-451 (USN) WHIDBEY ISLAND NAS (AULT FLD) (KNUW)

**MISSED APPROACH:** Climb to 1500, then climbing right turn to 3000 direct KASEY and hold. Do not exceed 230 KIAS until turn completion.

ATIS 134.15 281.5	APP CON/DEP CON 118.2 285.65 (W) 120.7 270.8 (E)	TOWER 127.9 340.2	GND CON 121.75 336.4	CLNC DEL 135.1 379.9	ASR/PAR
----------------------	--	----------------------	-------------------------	-------------------------	---------



EMERG SAFE ALT 100 NM 16,500



CATEGORY	A	B	C	D
LNAV MDA	420-1	395 (400-1)	420-1½	395 (400-1½)
◻ CIRCLING	700-1 653 (700-1)	800-1 753 (800-1)	900-2½ 853 (900-2½)	900-2¾ 853 (900-2¾)

TDZ/CL Rwy 14  
HIRL all Rwys

OAK HARBOR, WASHINGTON 48°21'N - 122°39'W WHIDBEY ISLAND NAS (AULT FLD) (KNUW)

# RNAV (GPS) RWY 7

Amdt 1 21MAY20

NW-1, 19 MAY 2022 to 16 JUN 2022

NW-1, 19 MAY 2022 to 16 JUN 2022