

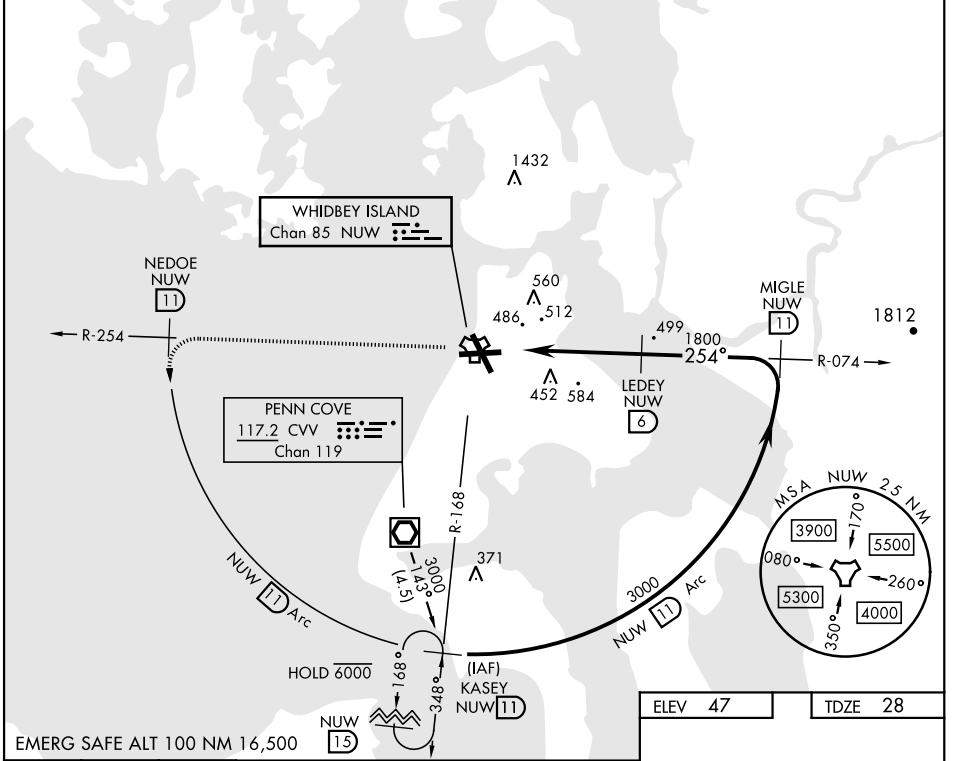
OAK HARBOR, WASHINGTON

TACAN Y RWY 25

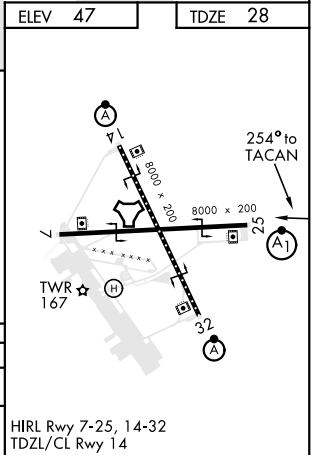
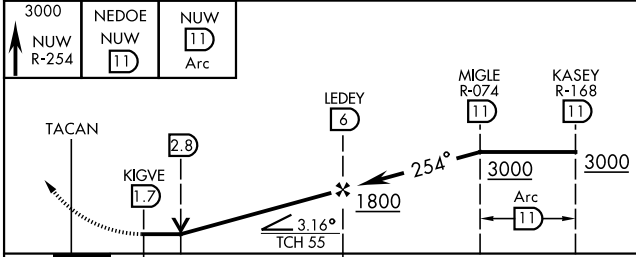
TACAN NUW Chan 85	APCH CRS 254°	Rwy Idg 8000 TDZE 28 Arprt Elev 47	AL-451 [USN]	WHIDBEY ISLAND NAS (AULT FLD) (KNUW)
----------------------	------------------	---	--------------	--------------------------------------

<p>▼ * When ALS inop, increase CAT AB vis to 1 mile, CAT CD to 2 miles.</p>		<p>ALSF-1</p>	<p>MISSED APPROACH: Climb to 3000 via NUW TACAN R-254 to NEDOE, then arc SW of NUW via 11 DME Arc to KASEY and hold.</p>		
<p>ATIS 134.15 281.5</p>	<p>WHIDBEY APP CON 120.7 270.8 (E) 118.2 285.65 (W)</p>	<p>WHIDBEY TOWER 127.9 340.2</p>	<p>GND CON 121.75 336.4</p>	<p>CLNC DEL 135.1 379.9</p>	<p>ASR/PAR</p>

CAUTION: CAT CD intmed seg length 5 NM.



EMERG SAFE ALT 100 NM 16,500



CATEGORY	A	B	C	D
S-25*	740- $\frac{3}{8}$ 712 (700- $\frac{3}{8}$)		740-1 $\frac{1}{2}$ 712 (700-1 $\frac{1}{2}$)	
CIRCLING	760-1 713 (800-1)	800-1 753 (800-1)	900-2 $\frac{1}{2}$ 853 (900-2 $\frac{1}{2}$)	900-2 $\frac{3}{4}$ 853 (900-2 $\frac{3}{4}$)

HIRL Rwy 7-25, 14-32
TDZL/CL Rwy 14

OAK HARBOR, WASHINGTON

48° 21' N-122° 39' W

WHIDBEY ISLAND NAS (AULT FLD) (KNUW)

Amdt 3 02DEC21

TACAN Y RWY 25

NW-1, 19 MAY 2022 to 16 JUN 2022

NW-1, 19 MAY 2022 to 16 JUN 2022