

TACAN Y RWY 32

TACAN NUW Chan 85	APCH CRS 311°	Rwy ldg 8000 TDZE 47 Arprt Elev 47
-----------------------------	-------------------------	---

AL-451 [USN]

WHIDBEY ISLAND NAS (AULT FLD) (KNUW)

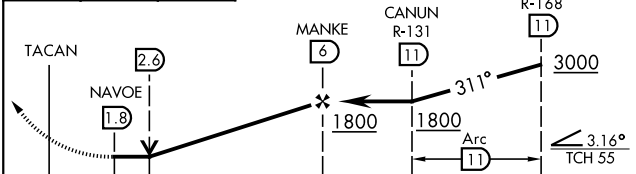
<p>▼ * When ALS inop, increase CAT AB vis to 1 mile, CAT CD to 1¼ miles.</p>	<p>ALSF-2 A</p>	<p>MISSED APPROACH: Climb to 3000 via NUW TACAN R-308 to LUPEZ, then Arc SW of NUW via 11 DME Arc to KASEY and hold.</p>
--	---------------------	--

<p>ATIS 134.15 281.5</p>	<p>WHIDBEY APP CON 120.7 270.8 (E) 118.2 285.65 (W)</p>	<p>WHIDBEY TOWER 127.9 340.2</p>	<p>GND CON 121.75 336.4</p>	<p>CLNC DEL 135.1 379.9</p>	<p>ASR/PAR</p>
-------------------------------------	---	---	--	--	----------------

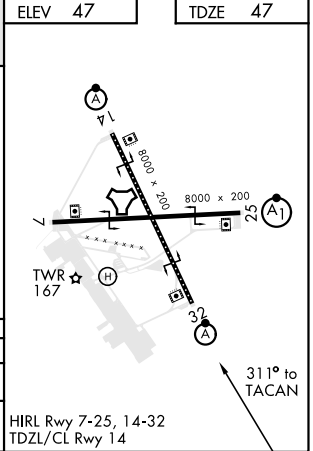


ELEV 47	TDZE 47
----------------	----------------

<p>3000 NUW R-308</p>	<p>LUPEZ NUW 11</p>	<p>NUW 11 Arc</p>
---------------------------	-------------------------	-----------------------



CATEGORY	A	B	C	D
S-32*	680-5/8 633 (700-5/8)		680-13/8 633 (700-13/8)	
CIRCLING	760-1 713 (800-1)	800-1 753 (800-1)	900-2 1/2 853 (900-2 1/2)	900-2 3/4 853 (900-2 3/4)



TACAN Y RWY 32

NW-1, 19 MAY 2022 to 16 JUN 2022

NW-1, 19 MAY 2022 to 16 JUN 2022