

# COPTER ILS or LOC RWY 6

BRADLEY INTL (BDL)

LOC/DME I-BDL	APP CRS	Rwy Idg	<b>9509</b>
<b>111.1</b>	<b>058°</b>	TDZE	<b>173</b>
Chan <b>48</b>		Apt Elev	<b>173</b>

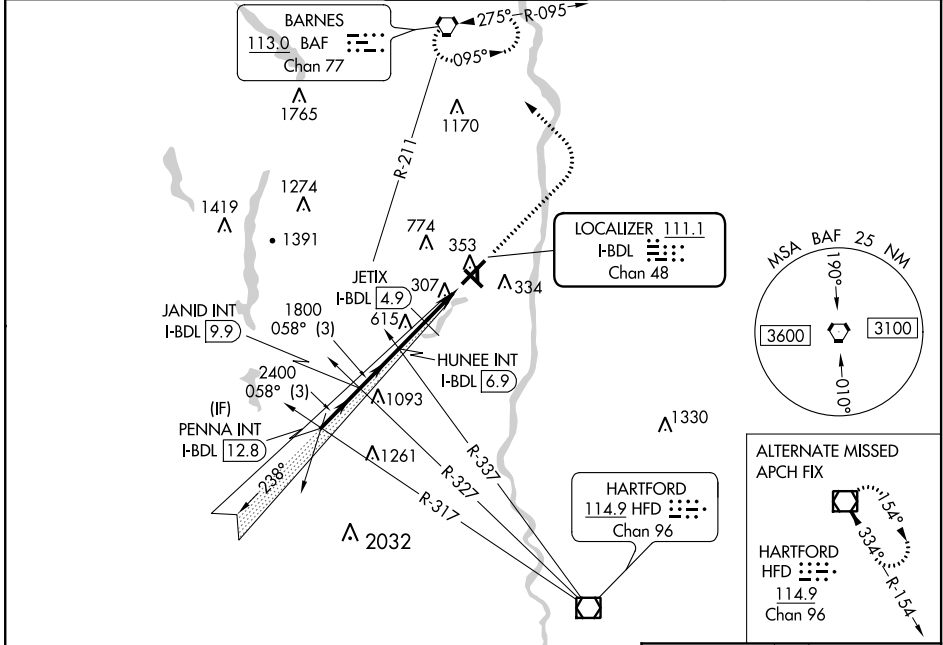
RADAR required for procedure entry.

For inop ALS, increase H-ILS 6 visibility to RVR 2400 and H-LOC 6 visibility to RVR 4000.

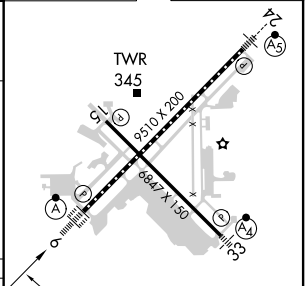
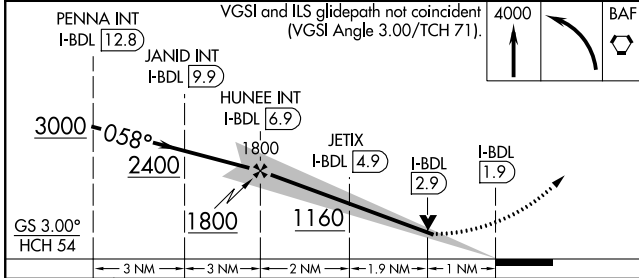
ALSF-2

MISSED APPROACH: Climb to 4000 then left turn direct BAF VORTAC and hold.

D-ATIS	YANKEE APP CON	BRADLEY TOWER	GND CON	CLNC DEL	CPDLC
<b>118.15</b>	<b>123.95 290.55</b> (061°-240°)	<b>120.3 351.8</b>	<b>121.9 348.6</b>	<b>121.75 322.3</b>	
	<b>125.35 281.5</b> (241°-060°)				



ELEV 173	TDZE 173
----------	----------



CATEGORY	COPTER	
H-ILS 6	273/12	100 (100-¼)
H-LOC 6	1160/24	987 (1000-½)
H-ILS 6	CAT II RA 101	
JETIX FIX MINIMUMS (DME REQUIRED)		
H-LOC 6	560/24	387 (400-½)

**COPTER ILS CATEGORY II - SPECIAL AIRCREW & AIRCRAFT CERTIFICATION REQUIRED**

FAF to MAP 4.9 NM					
Knots	45	60	75	90	105
Min:Sec	6:32	4:55	3:55	3:16	2:48

TDZ/CL Rwy 6 and 24  
HIRL Rwys 6-24 and 15-33  
MIRL Rwy 1-19  
REIL Rwys 6 and 15

NE-1, 19 MAY 2022 to 16 JUN 2022

NE-1, 19 MAY 2022 to 16 JUN 2022