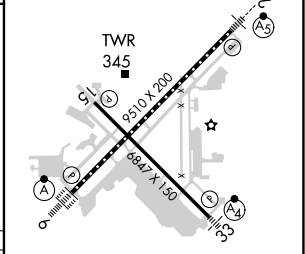
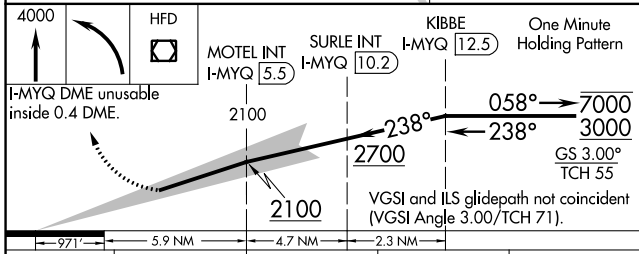
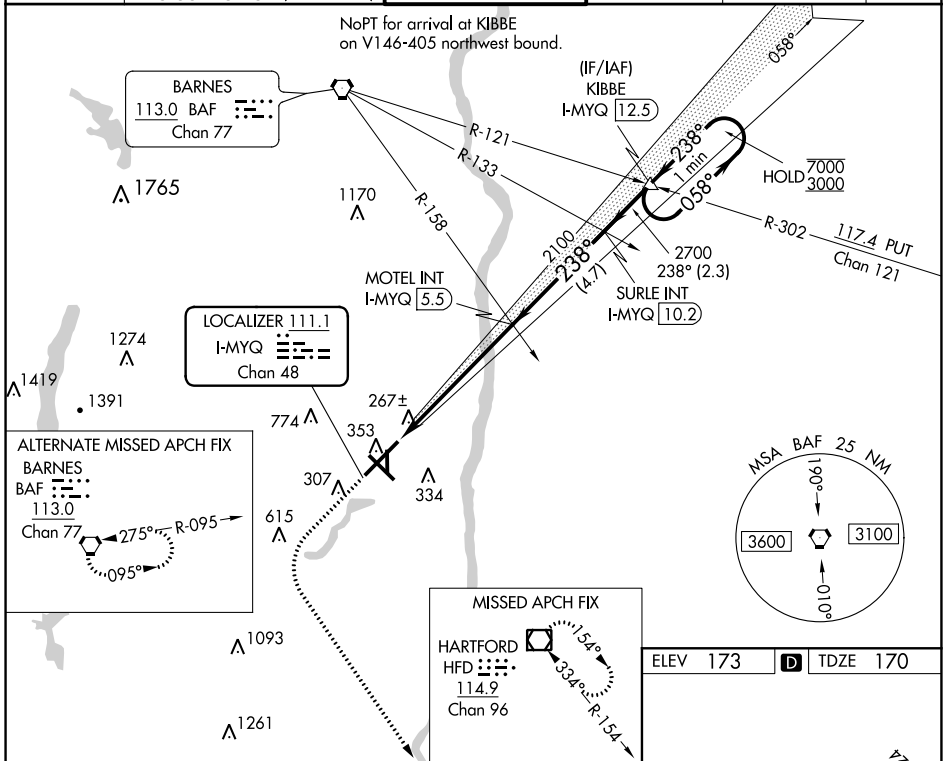


LOC/DME I-MYQ <b>111.1</b> Chan <b>48</b>	APP CRS <b>238°</b>	Rwy Idg <b>9509</b> TDZE <b>170</b> Apt Elev <b>173</b>
---	------------------------	---

**ILS RWY 24 (SA CAT I & II)**  
BRADLEY INTL (BDL)

<p>SA CAT I: Requires specific OPSPEC, MSPEC or LOA approval. SA CAT II: Requires specific OPSPEC, MSPEC or LOA approval.</p>	MALSR 	MISSED APPROACH: Climb to 4000 then left turn direct HFD VOR/DME and hold.			
	D-ATIS <b>118.15</b>	YANKEE APP CON <b>123.95 290.55</b> (061°-240°) <b>125.35 281.5</b> (241°-060°)	BRADLEY TOWER <b>120.3 351.8</b>	GND CON <b>121.9 348.6</b>	CLNC DEL <b>121.75 322.3</b>



CATEGORY	A	B	C	D
S-ILS 24	SA CAT I	RA 163/14	150	DA 320
S-ILS 24	SA CAT II	RA 113/12	100	DA 270

**SA CATEGORY I & II ILS-SPECIAL AIRCREW & AIRCRAFT CERTIFICATION REQUIRED**

HIRL Rwy 6-24 and 15-33  
MIRL Rwy 1-19  
REIL Rwy 6 and 15  
TDZ/CL Rwy 6 and 24

NE-1, 19 MAY 2022 to 16 JUN 2022

NE-1, 19 MAY 2022 to 16 JUN 2022