

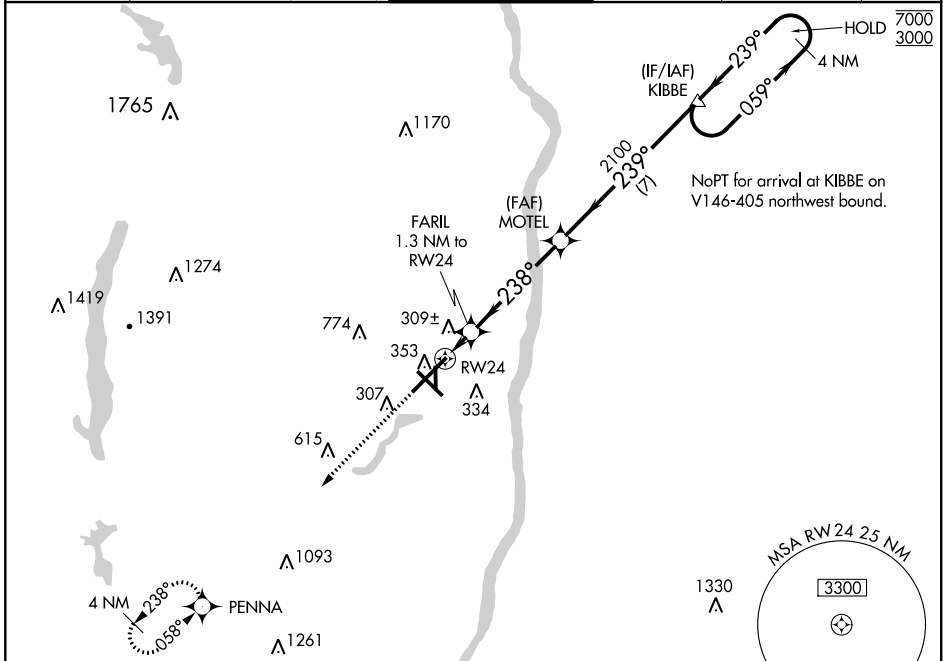
WAAS CH <b>97310</b> <b>W24A</b>	APP CRS <b>238°</b>	Rwy Idg TDZE Apt Elev	<b>9509</b> <b>170</b> <b>173</b>
--	------------------------	-----------------------------	---

# RNAV (GPS) Y RWY 24

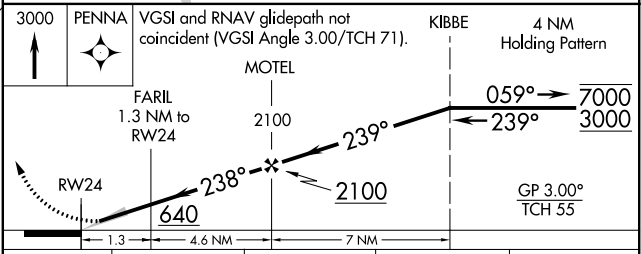
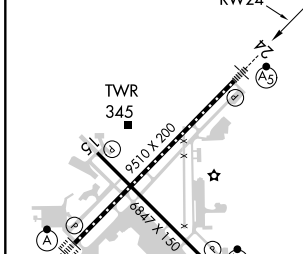
BRADLEY INTL (BDL)

RNP APCH-GPS. ▲ For uncompensated Baro-VNAV systems, LNAV/VNAV NA below -18°C or above 54°C.	MALSRR ▲	MISSED APPROACH: Climb to 3000 direct PENNA and hold.
---	-------------	--

D-ATIS <b>118.15</b>	YANKEE APP CON <b>123.95 290.55 281.5</b> (061°-240°) (241°-060°)	BRADLEY TOWER <b>120.3 351.8</b>	GND CON <b>121.9 348.6</b>	CLNC DEL <b>121.75 322.3</b>	CPDLC
-------------------------	--	-------------------------------------	-------------------------------	---------------------------------	-------



ELEV 173	<b>D</b>	TDZE 170
----------	----------	----------



CATEGORY	A	B	C	D
LPV DA	370/18		200 (200-½)	
LNAV/VNAV DA	560/45		390 (400-¾)	
LNAV MDA	560/24	390 (400-½)	560/35	390 (400-¾)
<b>C</b> CIRCLING	700-1	527 (600-1)	1120-2¾ 947 (1000-2¾)	1220-3 1047 (1100-3)

HIRL Rwy 6-24 and 15-33  
MIRL Rwy 1-19  
REIL Rwy 6 and 15  
TDZ/CL Rwy 6 and 24

NE-1, 19 MAY 2022 to 16 JUN 2022

NE-1, 19 MAY 2022 to 16 JUN 2022