

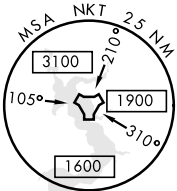
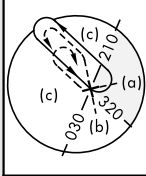
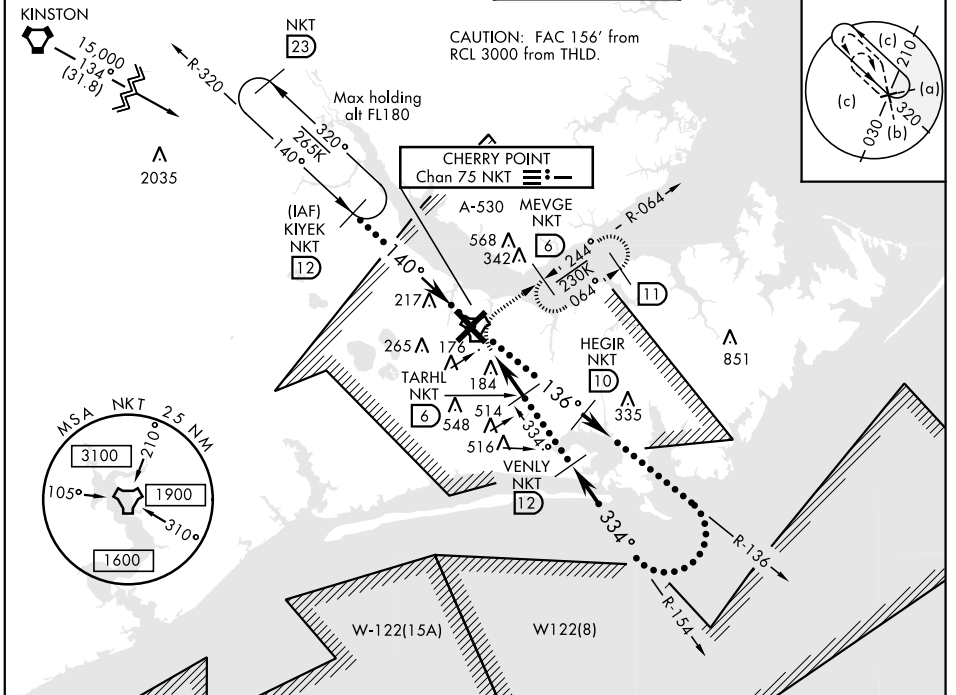
CHERRY POINT, NORTH CAROLINA

# HI-TACAN Z RWY 32L

TACAN NKT Chan <b>75</b>	APCH CRS <b>334°</b>	Rwy ldg TDZE Arprt Elev <b>7551</b> <b>26</b> <b>29</b>	JAL-471 [USN]	CHERRY POINT MCAS (CUNNINGHAM FLD) (KNKT)
-----------------------------	-------------------------	---	---------------	---

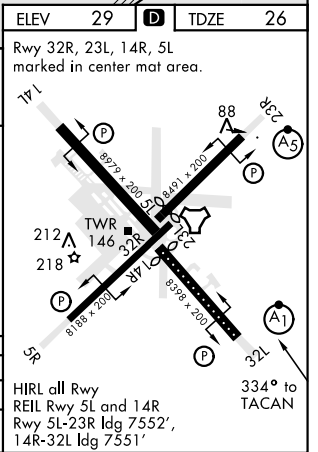
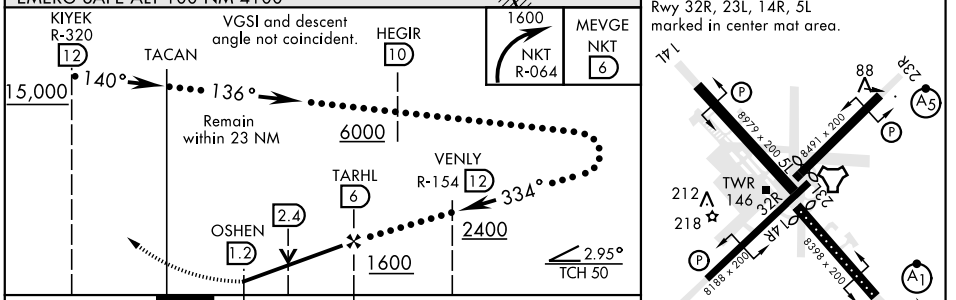
▼ \* When ALS inop, increase vis to 1½ miles.
ALS-1 (A1)
MISSED APPROACH: Climbing right turn to 1600 direct MEVGE and hold.

ATIS <b>127.475</b> <b>244.875</b>	CHERRY POINT APP CON (E) <b>119.75</b> <b>360.775</b> (abv 2600') (E) <b>132.575</b> <b>299.6</b> (at/blw 2600') (W) <b>119.35</b> <b>377.175</b> (N) <b>124.1</b> <b>268.7</b>	CHERRY POINT TOWER <b>121.3</b> <b>340.2</b>	GND CON <b>128.625</b> <b>239.025</b>	CLNC DEL <b>125.95</b> <b>316.125</b>	ASR/ PAR
--	--	---	---	---	-------------



EMERG SAFE ALT 100 NM 4100

ELEV 29	TDZE 26
---------	---------



CATEGORY	C	D	E
S-32L *	480-7/8	454 (500-7/8)	
CIRCLING	600-1½ 571 (600-1½)	600-2 571 (600-2)	700-2½ 671 (700-2½)

CHERRY POINT, NORTH CAROLINA 34° 54' N-76° 53' W CHERRY POINT MCAS (CUNNINGHAM FLD) (KNKT)

# HI-TACAN Z RWY 32L

Amdt 6 10SEP20

SE-2, 19 MAY 2022 to 16 JUN 2022

SE-2, 19 MAY 2022 to 16 JUN 2022