

CHERRY POINT, NORTH CAROLINA

RNAV (GPS) RWY 14L

WAAS Chan 41117 W14A	APCH CRS 144°	Rwy Idg TDZE Arprt Elev 8979 26 29
--	-------------------------	--

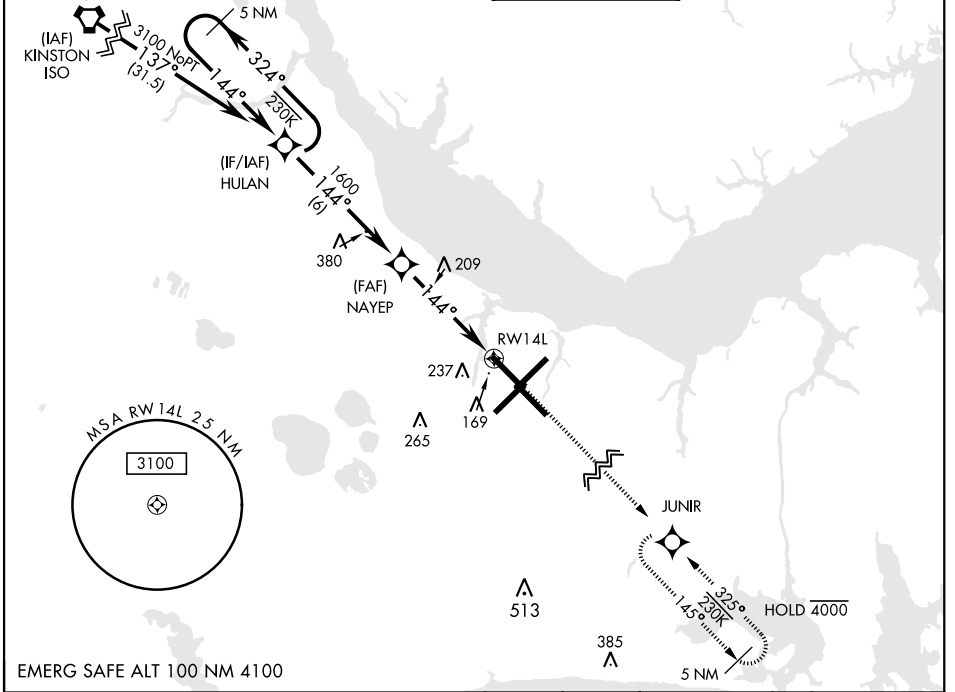
AL-471 [USN] CHERRY POINT MCAS (CUNNINGHAM FLD) (KNKT)

RNP APCH

▼ For uncompensated Baro-VNAV systems, LNAV/VNAV NA below -15°C (5°F) or above 54°C (129°F).

MISSED APPROACH: Climb to 3100 direct JUNIR and hold.

ATIS 127.475 244.875	APP CON 119.75 (E) 360.775 (abv 2600') 132.575 (E) 299.6 (at/blw 2600') 119.35 (W) 377.175 (N) 124.1 268.7	TOWER 121.3 340.2	GND CON 128.625 239.025	CLNC DEL 125.95 316.125	ASR/ PAR
--	---	------------------------------------	---	---	-------------



VGSI and RNAV glidepath not coincident (VGSI Angle 3.00/TCH 71).

5 NM Holding Pattern

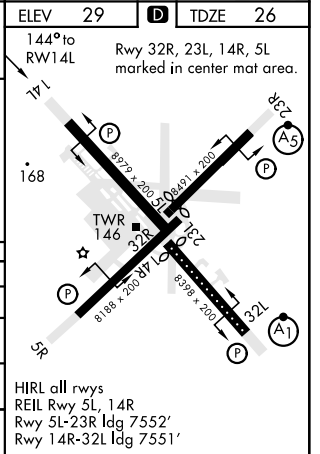
HULAN

NAYEP

RW14L

GP 3.04° TCH 55

CATEGORY	A	B	C	D
LPV DA	226-¾		200 (200-¾)	
LNAV/VNAV DA	302-7/8 276 (300-7/8)	313-7/8 287 (300-7/8)	321-7/8 295 (300-7/8)	332-7/8 306 (400-7/8)
LNAV MDA	500-1	474 (500-1)	500-1¾	474 (500-1¾)
CIRCLING	580-1	551 (600-1)	600-1½ 571 (600-1½)	600-2 571 (600-2)



CHERRY POINT, NORTH CAROLINA

34° 54'N-76° 53'W

CHERRY POINT MCAS (CUNNINGHAM FLD) (KNKT)

Amdt 4 09SEP21

RNAV (GPS) RWY 14L

SE-2, 19 MAY 2022 to 16 JUN 2022

SE-2, 19 MAY 2022 to 16 JUN 2022