

ILS or LOC RWY 18L

LOC I-RUK 110.55	APCH CRS 175°	Rwy Idg TDZE Arpt Elev 9001 1382 1382
----------------------------	-------------------------	---

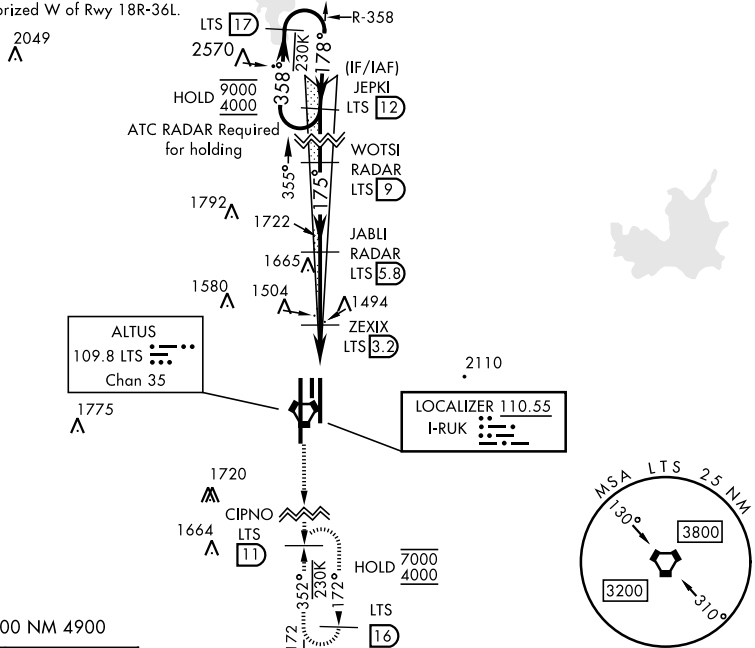
AL-482 [USAF]

ALTUS AFB (KLTS)

DME or RADAR required.	SALSF A2	MISSED APPROACH: Climb to 4000, intercept LTS VORTAC R-172 to CIPNO and hold.
------------------------	--------------------	---

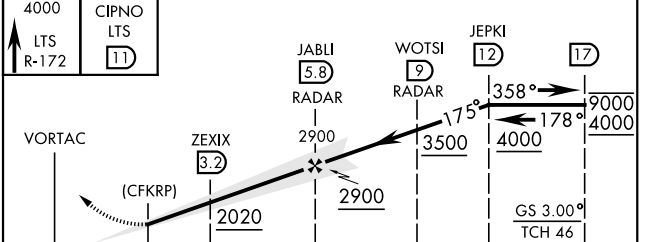
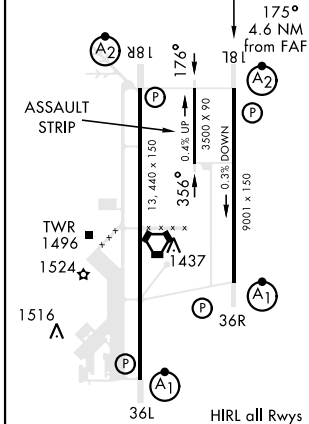
ATIS ★ 109.8 273.5	FORT WORTH CENTER 133.5 350.35	APP CON 125.1 353.7	TOWER ★ 119.65 254.4	GND CON 121.85 275.8	CLNC DEL 120.65 284.7
------------------------------	--	-------------------------------	--------------------------------	--------------------------------	---------------------------------

***Circling not authorized W of Rwy 18R-36L.



EMERG SAFE ALT 100 NM 4900

ELEV 1382	TDZE 1382
-----------	-----------



CATEGORY	A	B	C	D	E
S-ILS 18L	1582/40	200	(200-¾)		
S-LOC 18L*	1740/40	358	(400-¾)		
*** CIRCLING	1780-1 398 (400-1)	1840-1 458 (500-1)	1860-1½ 478 (500-1½)	2060-2¼ 678 (700-2¼)	2160-2¾ 778 (800-2¾)
WITHOUT LAST STEPDOWN FIX					
S-LOC 18L**	2020/40	638 (700-¾)	2020-1½	638	(700-1½)
*** CIRCLING	2020-1	638 (700-1)	2020-1¾ 638 (700-1¾)	2060-2¼ 678 (700-2¼)	2160-2¾ 778 (800-2¾)

ILS or LOC RWY 18L

SC-1, 19 MAY 2022 to 16 JUN 2022

SC-1, 19 MAY 2022 to 16 JUN 2022