

ALTUS, OKLAHOMA

ILS or RNAV (GPS) Y RWY 18R

LOC I-ALT 111.3	APCH CRS 175°	Rwy ldg THRE 1379 Arprt Elev 1382
---------------------------	-------------------------	---

AL-482 (USAF)

ALTUS AFB (KLTS)

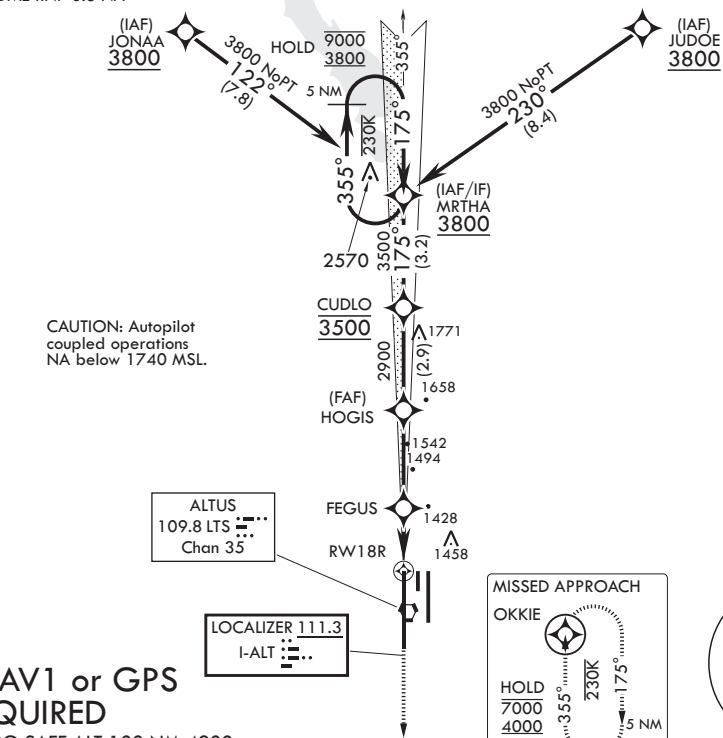
⚠ * When ALS inop increase RVR to 55, vis to 1 mile.
 ** Circling not authorized W of Rwy 18R-36L.



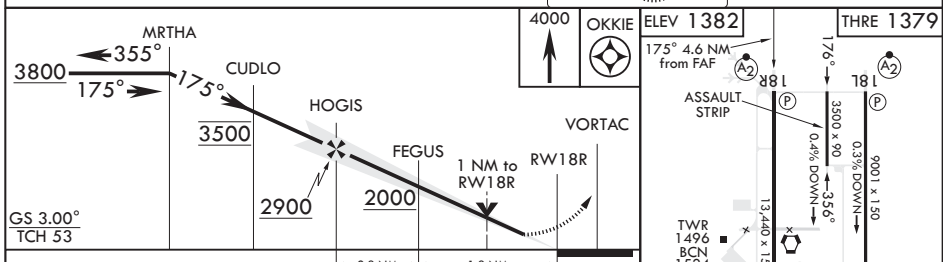
MISSED APPROACH: Climb to 4000 direct OKKIE and hold.

ATIS★ 109.8 273.5	FORT WORTH CENTER 133.5 350.35	APP CON 125.1 353.7	TOWER★ 119.65 254.4	GND CON 121.85 275.8	CLNC DEL 120.65 284.7
-----------------------------	--	-------------------------------	-------------------------------	--------------------------------	---------------------------------

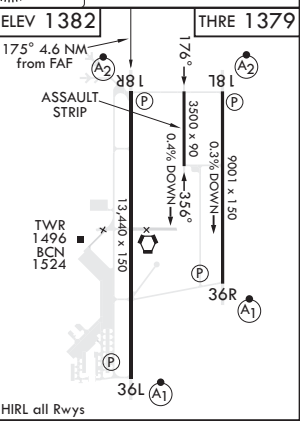
DME/DME RNP 0.3 NA



RNAV1 or GPS REQUIRED
 EMERG SAFE ALT 100 NM 4900



CATEGORY	A	B	C	D	E
S-ILS 18R		1579/40	200	(200-¾)	
LNAV MDA*		1720/40	341	(400-¾)	
C CIRCLING**	1780-1 398 (400-1)	1840-1 458 (500-1)	1860-1½ 478 (500-1½)	2060-2¼ 678 (700-2¼)	2160-2¾ 778 (800-2¾)



ALTUS, OKLAHOMA
 Amdt 1 07OCT21

34°40'N - 99°16'W

ALTUS AFB (KLTS)

ILS or RNAV (GPS) Y RWY 18R

SC-1, 19 MAY 2022 to 16 JUN 2022

SC-1, 19 MAY 2022 to 16 JUN 2022