

ALTUS, OKLAHOMA

ILS or RNAV (GPS) Y RWY 36L

LOC I-LTS 110.3	APCH CRS 355°	Rwy Idg 13,440	TDZE 1354
		Arpt Elev 1382	

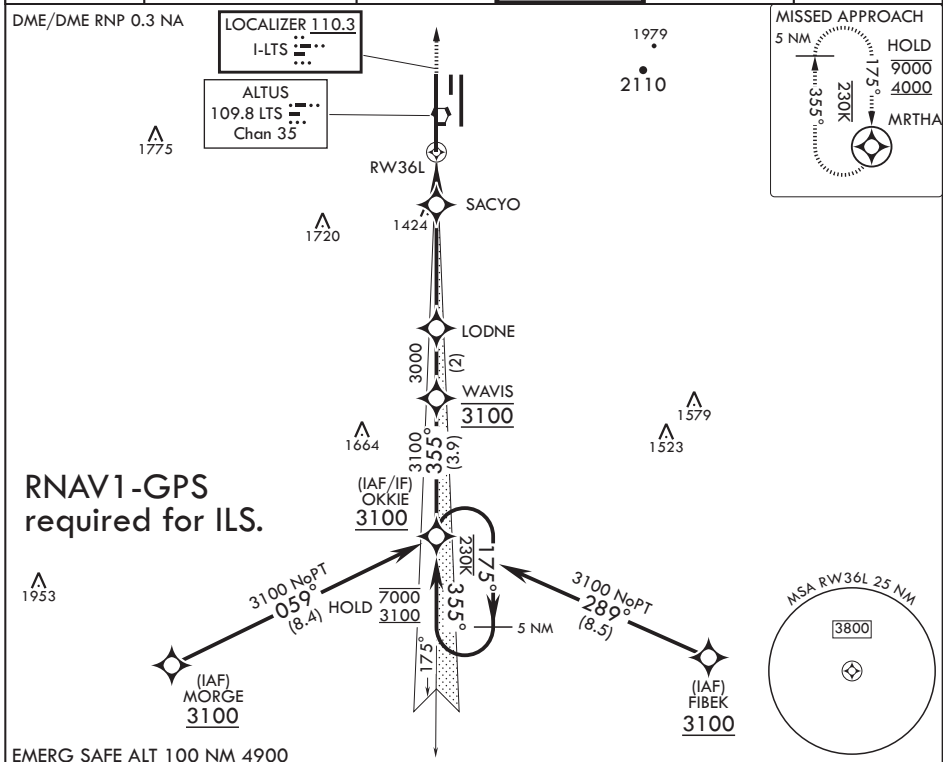
AL-482 (USAF)

ALTUS AFB (KLTS)

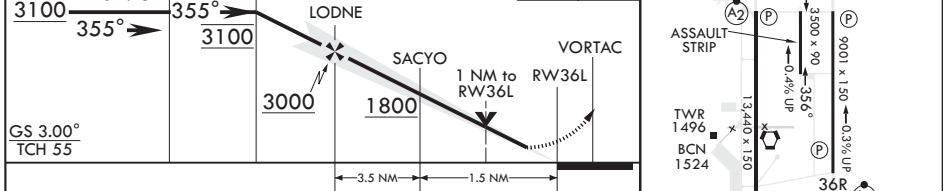
⚠ * When ALS inop, increase CAT ABCDE RVR to 40, vis to 3/4 mile; RVR 18 authorized with use of FD or AP or HUD to DA.
 ** When ALS inop, increase CAT ABCDE RVR to 55, vis to 1 mile.
 *** Circling NA W of Rwy 18R-36L.

ALSF-1 MISSED APPROACH: Climb to 4000 direct MRTHA and hold.

ATIS* 109.8 273.5	FORT WORTH CENTER 133.5 350.35	APP CON 125.1 353.7	TOWER* 119.65 254.4	GND CON 121.85 275.8	CLNC DEL 120.65 284.7
-----------------------------	------------------------------------------	-------------------------------	-------------------------------	--------------------------------	---------------------------------



4000 MRTHA ELEV 1382 TDZE 1354



CATEGORY	A	B	C	D	E
S-ILS 36L*	1554/24		200	(200-½)	
LNAV MDA**	1720/24	366 (400-½)	1720/35	366 (400-¾)	
C CIRCLING***	1780-1 398 (400-1)	1840-1 458 (500-1)	1860-1½ 478 (500-1½)	2060-2¼ 678 (700-2¼)	2160-2¾ 778 (800-2¾)

HIRL all Rwys

ALTUS, OKLAHOMA

34°40'N - 99°16'W

ALTUS AFB (KLTS)

Amdt 2 07OCT21
TERPS

ILS or RNAV (GPS) Y RWY 36L

SC-1, 19 MAY 2022 to 16 JUN 2022

SC-1, 19 MAY 2022 to 16 JUN 2022