

# ILS Z or LOC RWY 18R

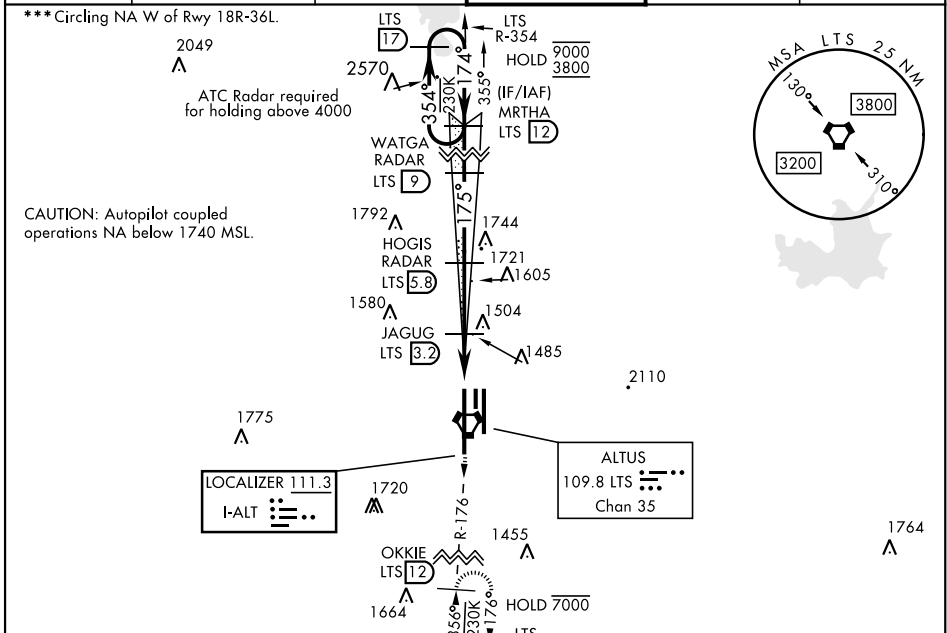
LOC I-ALT <b>111.3</b>	APCH CRS <b>175°</b>	Rwy Idg <b>13,440</b> TDZE <b>1379</b> Arprt Elev <b>1382</b>
---------------------------	-------------------------	---

AL-482 [USAF]

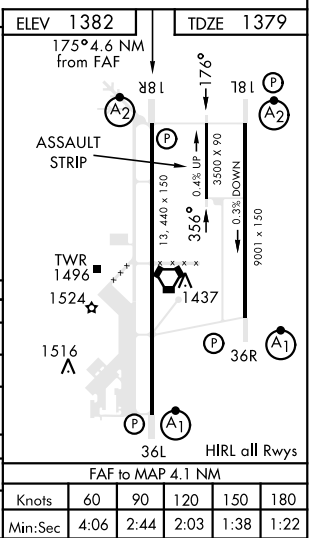
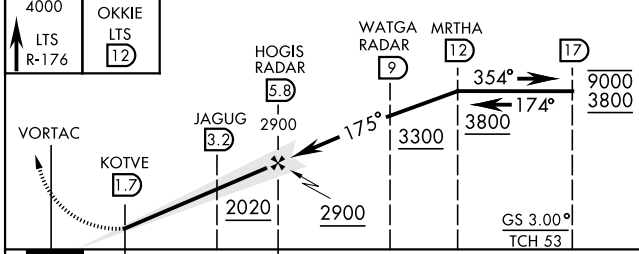
ALTUS AFB (KLTS)

DME or RADAR required.	SALSF 	MISSED APPROACH: Climb to 4000, intercept LTS VORTAC R-176 to OKKIE and hold.
------------------------	-----------	---

ATIS ★ <b>109.8 273.5</b>	FORT WORTH CENTER <b>133.5 350.35</b>	APP CON <b>125.1 353.7</b>	TOWER ★ <b>119.65 254.4</b>	GND CON <b>121.85 275.8</b>	CLNC DEL <b>120.65 284.7</b>
------------------------------	--	-------------------------------	--------------------------------	--------------------------------	---------------------------------



EMERG SAFE ALT 100 NM 4900



CATEGORY	A	B	C	D	E
S-ILS 18R	1579/40		200	(200-¾)	
S-LOC 18R *	1740/40		361	(400-¾)	
*** CIRCLING	1780-1 398 (400-1)	1840-1 458 (500-1)	1860-1½ 478 (500-1½)	2060-2¼ 678 (700-2¼)	2160-2¾ 778 (800-2¾)
LOCAL ALTIMETER, WITHOUT LAST STEPDOWN FIX					
S-LOC 18R **	2020/40	641 (700-¾)	2020-1½	641	(500-1½)
*** CIRCLING	2020-1	638 (700-1)	2020-1½	678 (700-1½)	2160-2¾ 778 (800-2¾)

ALTUS, OKLAHOMA  
Amdt 1 07OCT21

34° 40' N-99° 16' W

ALTUS AFB (KLTS)

# ILS Z or LOC RWY 18R

SC-1, 19 MAY 2022 to 16 JUN 2022

SC-1, 19 MAY 2022 to 16 JUN 2022

FAF to MAP 4.1 NM					
Knots	60	90	120	150	180
Min:Sec	4:06	2:44	2:03	1:38	1:22