

ALTUS, OKLAHOMA

RNAV (GPS)-A

APCH CRS 215°	Rwy Idg TDZE Arprt Elev	N/A N/A 1382
-------------------------	-------------------------------	---

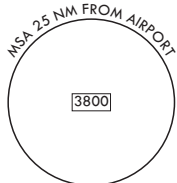
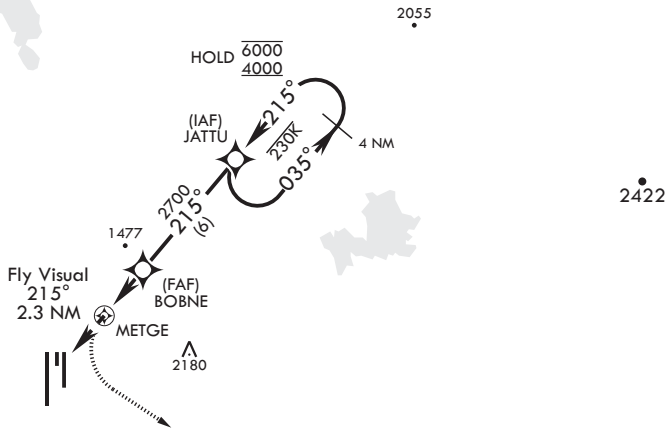
AL-482 (USAF)

ALTUS AFB (KLTS)

⚠ Circling NA W of Rwy 18R-36L. MISSED APPROACH: Climb to 2200, then climbing left turn to 4000 direct OLIRY and hold.

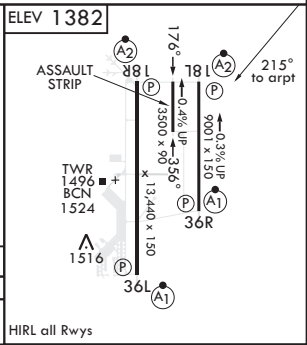
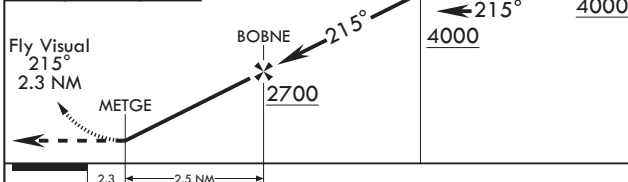
ATIS* 109.8 273.5	FORT WORTH CENTER 133.5 350.35	APP CON 125.1 353.7	TOWER* 119.65 254.4	GND CON 121.85 275.8	CLNC DEL 120.65 284.7
-----------------------------	--	-------------------------------	-------------------------------	--------------------------------	---------------------------------

RNP APCH
DME/DME RNP-0.3 NA



ATC RADAR REQUIRED
FOR USE BY 97
AMW ACFT ONLY

EMERG SAFE ALT 100 NM 4900



CATEGORY	A	B	C	D	E
C CIRCLING	NA			2060-3 678 (700-3)	2160-3 778 (800-3)

HIRL all Rwys

ALTUS, OKLAHOMA

34°40'N - 99°16'W

ALTUS AFB (KLTS)

Amdt 3 07OCT21
TERPS

RNAV (GPS)-A

SC-1, 19 MAY 2022 to 16 JUN 2022

SC-1, 19 MAY 2022 to 16 JUN 2022