

ALTUS, OKLAHOMA

# RNAV (GPS)-B

APCH CRS <b>293°</b>	Rwy Idg TDZE Arprt Elev	N/A N/A <b>1382</b>
-------------------------	-------------------------------	---------------------------

AL-482 (USAF)

ALTUS AFB (KLTS)

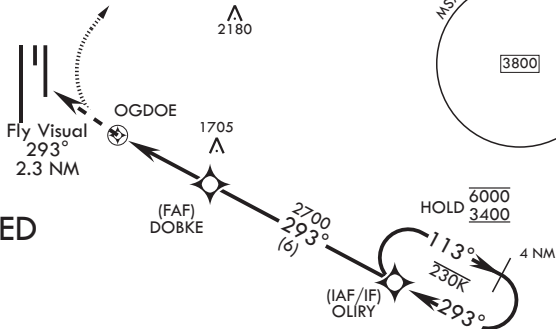
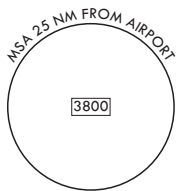
▼ Circling NA W of Rwy 18R-36L. MISSED APPROACH: Climb to 2200, then climbing right turn to 4000 direct JATTU and hold.

ATIS* <b>109.8 273.5</b>	FORT WORTH CENTER <b>133.5 350.35</b>	APP CON <b>125.1 353.7</b>	TOWER* <b>119.65 254.4</b>	GND CON <b>121.85 275.8</b>	CLNC DEL <b>120.65 284.7</b>
-----------------------------	--	-------------------------------	-------------------------------	--------------------------------	---------------------------------

RNP APCH  
DME/DME RNP-0.3 NA

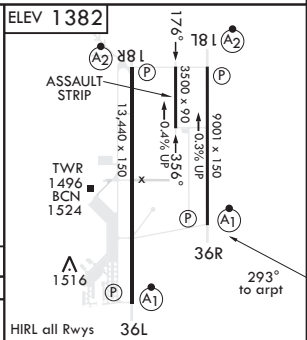
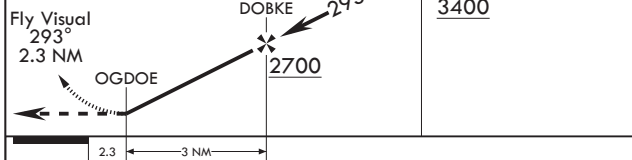
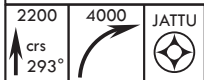
▲ 2055

2373



**ATC RADAR REQUIRED**  
**FOR USE BY 97**  
**AMW ACFT ONLY**

EMERG SAFE ALT 100 NM 4900



2.3	3 NM				
CATEGORY	A	B	C	D	E
◻ CIRCLING	NA			2060-3 678 (700-3)	2160-3 778 (800-3)

ALTUS, OKLAHOMA  
Amdt 3 07OCT21  
TERPS

34°40'N - 99°16'W

ALTUS AFB (KLTS)

# RNAV (GPS)-B

SC-1, 19 MAY 2022 to 16 JUN 2022

SC-1, 19 MAY 2022 to 16 JUN 2022