

ALTUS, OKLAHOMA

RNAV (RNP) X RWY 18R

APCH CRS 175°	Rwy Idg 13,440
	TDZE 1379
	Arpt Elev 1382

AL-482 (USAF)

ALTUS AFB (KLTS)

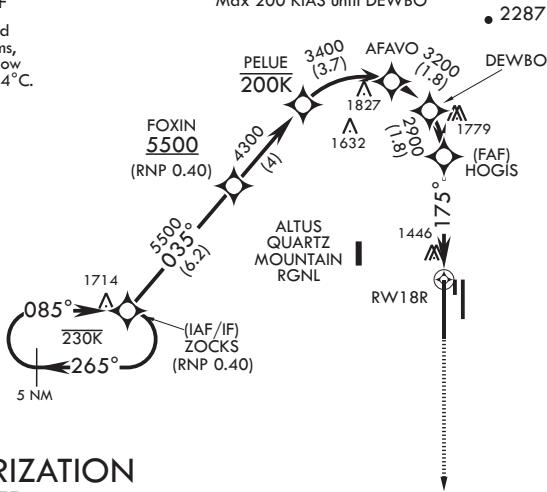
▼ * When ALS inop, increase RVR to 45, vis to 7/8 mile. ** When ALS inop, increase RVR to 60, vis to 1 1/8 miles.	SALS 	MISSED APPROACH: Climb to 4000 on track 175° to OKKIE and hold.

ATIS ★ 109.8 273.5	APP CON 125.1 353.7	TOWER ★ 119.65 254.4	GND CON 121.85 275.8	CLNC DEL 120.65 284.7
-----------------------	------------------------	-------------------------	-------------------------	--------------------------

RNP AR APCH - RF

Max 200 KIAS until DEWB0

For uncompensated Baro-VNAV systems, procedure NA below -17°C or above 54°C.



**AUTHORIZATION
REQUIRED
FOR USE BY 97
AMW ACFT ONLY**

EMERG SAFE ALT 100 NM 4900

ZOCKS 8000 035° GP 3.00° TCH 53	FOXIN 5500	PELUE 4300	AFAVO 3400	DEWB0 3200	HOGIS 2900	RWY18R 175° 4.6 NM	OKKIE ELEV 1382 175° to RWY18R ASSAULT STRIP BCN TWR HIRL all Rwys	TDZE 1379 176° DOWN 176° DOWN 181 181 181 36R 36L
	CATEGORY RNP 0.10 DA* RNP 0.30 DA**						A 1679/40 1771/45	B 300 392

ALTUS, OKLAHOMA
Amdt 1 07OCT21

34°40'N - 99°16'W

ALTUS AFB (KLTS)

RNAV (RNP) X RWY 18R

SC-1, 19 MAY 2022 to 16 JUN 2022

SC-1, 19 MAY 2022 to 16 JUN 2022