

ALTUS, OKLAHOMA

# RNAV (RNP) Y RWY 18L

APCH CRS	Rwy Idg	9001
175°	TDZE	1382
	Arprt Elev	1382

AL-482 [USAF]

ALTUS AFB (KLTS)

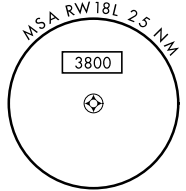
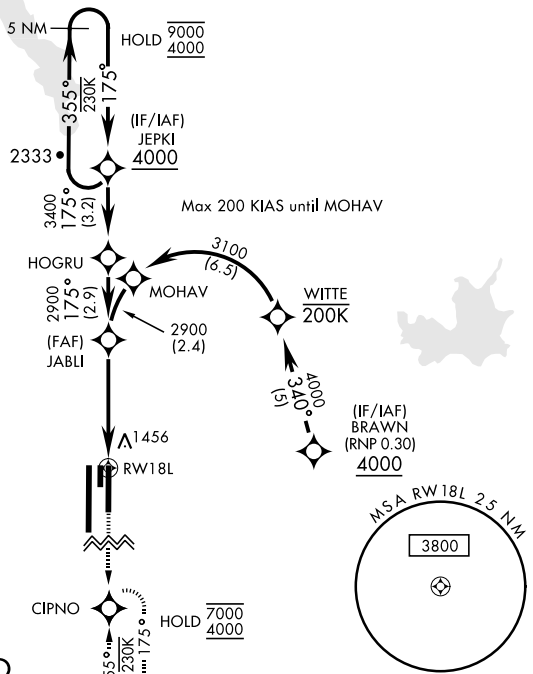
RNP AR APCH. From BRAWN: RF.



MISSED APPROACH: Climb to 4000 direct CIPNO and hold.

ATIS ★	FORT WORTH CENTER	APP CON	TOWER ★	GND CON	CLNC DEL
109.8 273.5	133.5 350.35	125.1 353.7	119.65 254.4	121.85 275.8	120.65 284.7

For uncompensated Baro-VNAV systems, procedure NA below -17°C (2°F) or above 54°C (130°F).



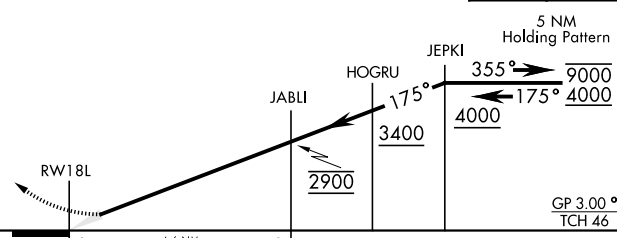
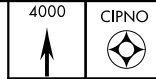
SC-1, 19 MAY 2022 to 16 JUN 2022

SC-1, 19 MAY 2022 to 16 JUN 2022

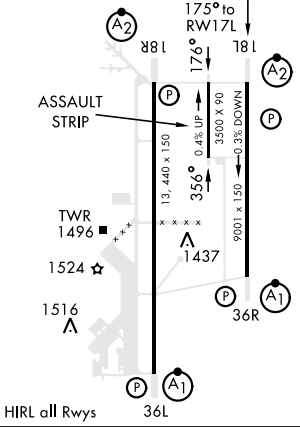
## AUTHORIZATION REQUIRED

EMERG SAFE ALT 100 NM 4900

See planview for multiple IF locations



ELEV	1382	TDZE	1382
------	------	------	------



CATEGORY	A	B	C	D
RNP 0.10 DA*	1644/40	262	(300-¾)	
RNP 0.30 DA**	1729/40	347	(400-¾)	
CIRCLING	NOT AUTHORIZED			

ALTUS, OKLAHOMA

34°40'N-99°16'W

ALTUS AFB (KLTS)

Amdt 1 07OCT21

# RNAV (RNP) Y RWY 18L