

ALTUS, OKLAHOMA

# RNAV (RNP) Y RWY 36R

APCH CRS	Rwy Idg	9001
355°	TDZE	1362
	Arprt Elev	1382

AL-482 [USAF]

ALTUS AFB (KLTS)

RNP AR APCH. From CURVO: RF.

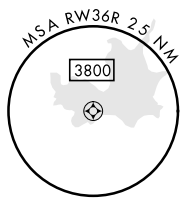
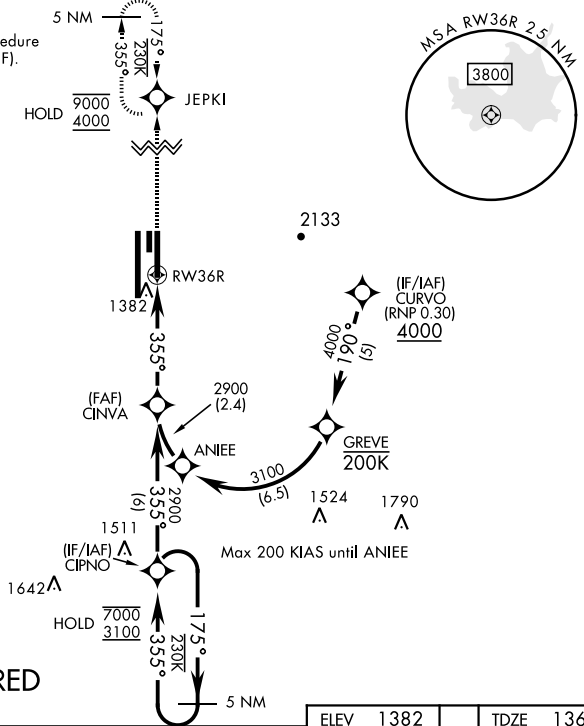
\* When ALS inop, increase RVR to 40, vis to 3/4 mile.  
 \*\* When ALS inop, increase RVR to 45, vis to 7/8 mile.



MISSED APPROACH: Climb to 4000 direct JEPKI and hold.

ATIS ★	FORT WORTH CENTER	APP CON	TOWER ★	GND CON	CLNC DEL
109.8 273.5	133.5 350.35	125.1 353.7	119.65 254.4	121.85 275.8	120.65 284.7

For uncompensated Baro-VNAV systems, procedure NA below -17° C (2° F) or above 54° C (130° F).

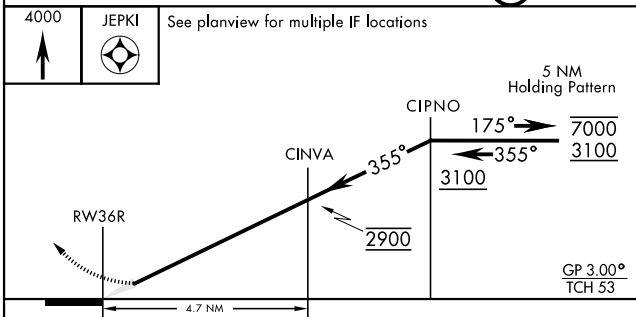


SC-1, 19 MAY 2022 to 16 JUN 2022

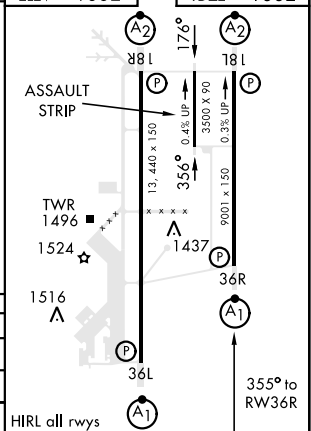
SC-1, 19 MAY 2022 to 16 JUN 2022

## AUTHORIZATION REQUIRED

EMERG SAFE ALT 100 NM 4900



ELEV 1382	TDZE 1362
-----------	-----------



CATEGORY	A	B	C	D
RNP 0.10 DA*	1612/24	250	(300-1/2)	
RNP 0.30 DA**	1662/24	300	(300-1/2)	
CIRCLING	NOT AUTHORIZED			

ALTUS, OKLAHOMA

34°40'N-99°16'W

ALTUS AFB (KLTS)

Amdt 1 07OCT21

# RNAV (RNP) Y RWY 36R