

ALTUS, OKLAHOMA

RNAV (GPS) Z RWY 18L

APCH CRS	Rwy Idg	9001
175°	TDZE	1382
	Arprt Elev	1382

AL-482 (USAF)

ALTUS AFB (KLTS)

⚠ * When ALS inop, increase CAT ABCDE RVR to 55, vis to 1 mile.
 ** Circling NA W of Rwy 18R-36L.



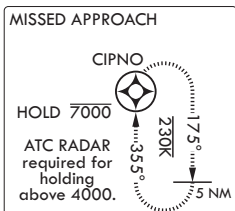
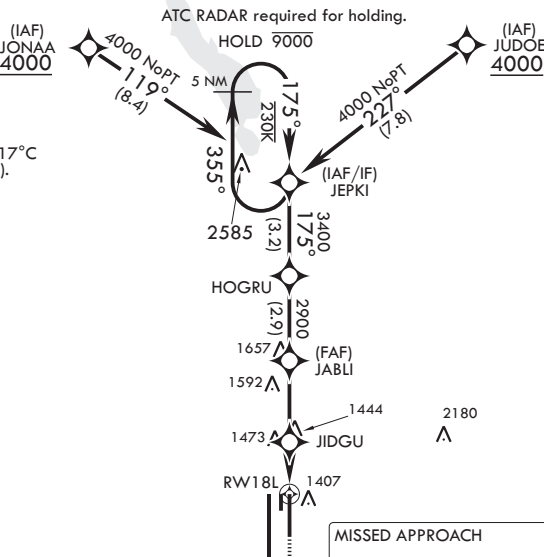
MISSED APPROACH: Climb to 4000 direct CIPNO and hold.

ATIS★	FORT WORTH CENTER	APP CON	TOWER★	GND CON	CLNC DEL
109.8 273.5	133.5 350.35	125.1 353.7	119.65 254.4	121.85 275.8	120.65 284.7

RNP APCH

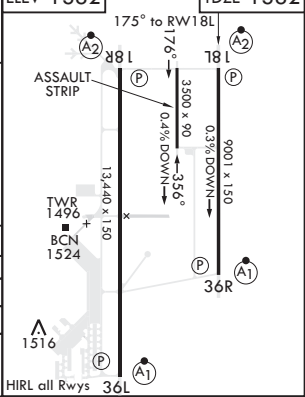
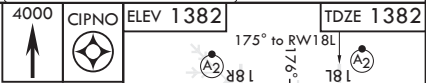
DME/DME RNP-0.3 NA

For uncompensated Baro-VNAV systems, procedure NA below -17°C or above 54°C (130°F).



EMERG SAFE ALT 100 NM 4900

4000	← 355°	JEPKI	175°	HOGRU	3400	JABLI	JIDGU	2000	0.9 NM to RWY 18L	RWY 18L
GP 3.00°	TCH 46							2900		
									2.8 NM	1.8 NM



CATEGORY	A	B	C	D	E
LNAV/VNAV DA	1632/40	250	(300-¾)		
LNAV MDA*	1720/40	338	(400-¾)		
C CIRCLING**	1780-1 398 (400-1)	1840-1 458 (500-1)	1860-1½ 478 (500-1½)	2060-2¼ 678 (700-2¼)	2160-2¾ 778 (800-2¾)

ALTUS, OKLAHOMA

34°40'N - 99°16'W

ALTUS AFB (KLTS)

Amdt 2 07OCT21
TERPS

RNAV (GPS) Z RWY 18L

SC-1, 19 MAY 2022 to 16 JUN 2022

SC-1, 19 MAY 2022 to 16 JUN 2022