

ALTUS, OKLAHOMA

RNAV (GPS) Z RWY 18R

APCH CRS	Rwy Idg	13,440
175°	TDZE	1379
	Arpt Elev	1382

AL-482 (USAF)

ALTUS AFB (KLTS)

<p>▼ * When ALS inop increase RVR to 45, vis to 7/8 mile. ** When ALS inop, increase RVR to 55, vis to 1 mile. *** Circling NA W of Rwy 18R-36L.</p>	SALS	MISSED APPROACH: Climb to 4000 direct OKKIE and hold.
	(A2)	

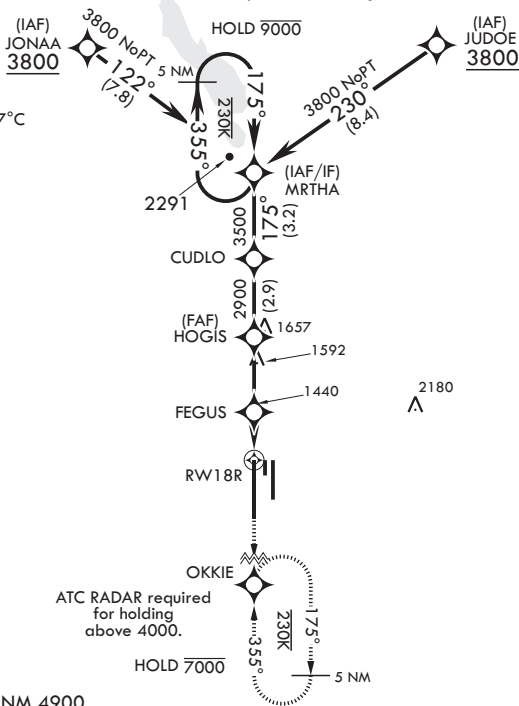
ATIS★	FORT WORTH CENTER	APP CON	TOWER★	GND CON	CLNC DEL
109.8 273.5	133.5 350.35	125.1 353.7	119.65 254.4	121.85 275.8	120.65 284.7

RNP APCH

DME/DME RNP-0.3 NA

ATC RADAR required for holding.

For uncompensated Baro-VNAV systems, procedure NA below -17°C or above 54°C (130°F).



EMERG SAFE ALT 100 NM 4900

<p>MRTHA</p> <p>3800 ← 355°</p> <p>175° →</p> <p>3500</p> <p>2900</p> <p>2000</p> <p>GP 3.00° †</p> <p>TCH 53</p>	<p>MRTHA</p> <p>3800 ← 355°</p> <p>175° →</p> <p>3500</p> <p>2900</p> <p>2000</p> <p>GP 3.00° †</p> <p>TCH 53</p>					<p>4000</p> <p>OKKIE</p>	<p>ELEV 1382</p> <p>175° to RW18R</p>	<p>TDZE 1379</p>
	<p>† HOGIS to MAP</p> <p>2.8 NM</p> <p>1.8 NM</p>					<p>ASSAULT STRIP</p> <p>176°</p> <p>0.4% DOWN</p> <p>0.3% DOWN</p> <p>36R</p> <p>36L</p>	<p>1516</p>	<p>BCN 1524</p> <p>TWR 1496</p>
CATEGORY	A	B	C	D	E			
LNAV/VNAV DA*	1660/40		281	(300-¾)				
LNAV MDA**	1720/40		341	(400-¾)				
CIRCLING***	1780-1 398 (400-1)	1840-1 458 (500-1)	1860-1½ 478 (500-1½)	2060-2¼ 678 (700-2¼)	2160-2¾ 778 (800-2¾)			

ALTUS, OKLAHOMA

34°40'N - 99°16'W

ALTUS AFB (KLTS)

Amdt 2 07OCT21

RNAV (GPS) Z RWY 18R

SC-1, 19 MAY 2022 to 16 JUN 2022

SC-1, 19 MAY 2022 to 16 JUN 2022