

ALTUS, OKLAHOMA

RNAV (GPS) Z RWY 36L

APCH CRS	Rwy Idg	13,440
355°	TDZE	1354
	Arpt Elev	1382

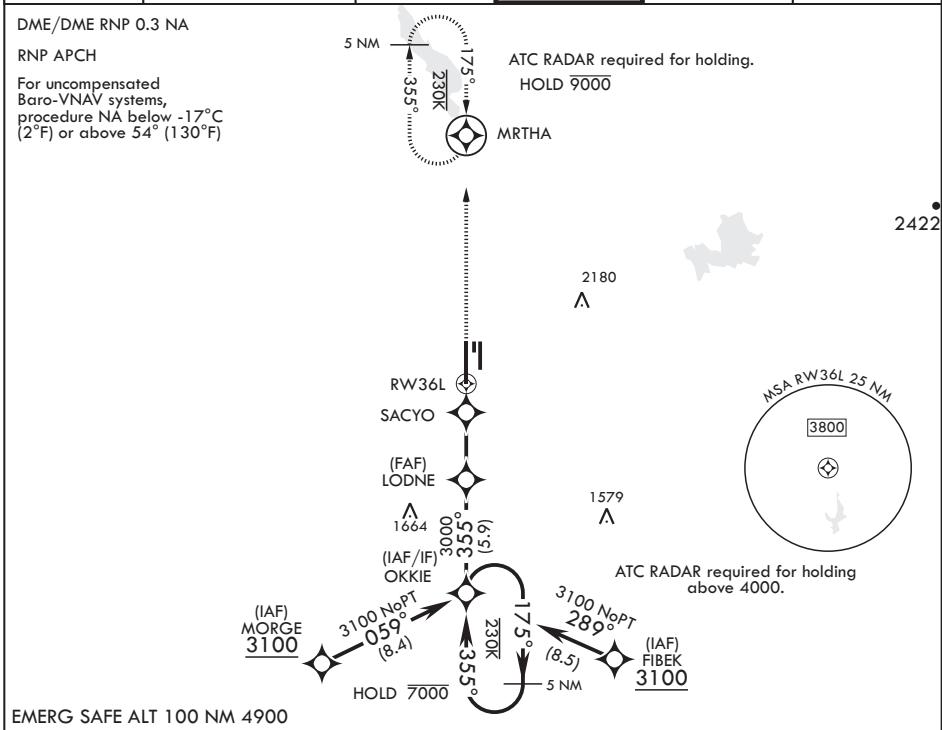
AL-482 (USAF)

ALTUS AFB (KLTS)

V * When ALS inop increase CAT AB RVR to 40, vis to 3/4 mile; CAT CD RVR to 45, vis to 7/8 mile; CAT E RVR to 50, vis to 1 mile.
 ** When ALS inop increase RVR to 55, vis to 1 mile.
 *** Circling NA W of Rwy 18R-36L.

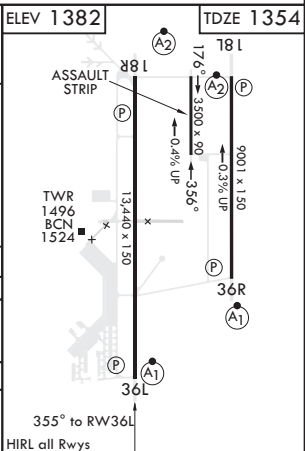
ALSF-1 MISSED APPROACH: Climb to 4000 direct MRTHA and hold.

ATIS* 109.8 273.5	FORT WORTH CENTER 133.5 350.35	APP CON 125.1 353.7	TOWER* 119.65 254.4	GND CON 121.85 275.8	CLNC DEL 120.65 284.7
-----------------------------	--	-------------------------------	-------------------------------	--------------------------------	---------------------------------



EMERG SAFE ALT 100 NM 4900

GP 3.00° TCH 55	OKKIE ← 175° 3100 ← 355° →		LODNE ← 355° →		SACYO ← 1800 →		RW36L ← 1382 →	
	3.5 NM		1.5 NM		1 NM to RW36L		4000 MRTHA ELEV 1382 TDZE 1354	
CATEGORY	A	B	C	D	E			
LNAV/VNAV DA*	1604/24	250 (300-½)	1615/24 261 (300-½)	1634/24 280 (300-½)	1677/26 323 (300-½)			
LNAV MDA**	1720/24	366 (400-½)	1720/35	366	(400-¾)			
C CIRCLING***	1780-1 398 (400-1)	1840-1 458 (500-1)	1860-1½ 478 (500-1½)	2060-2¼ 678 (700-2¼)	2160-2¾ 778 (800-2¾)			



ALTUS, OKLAHOMA
Amdt 2 07OCT21

34°40'N - 99°16'W

ALTUS AFB (KLTS)

RNAV (GPS) Z RWY 36L

SC-1, 19 MAY 2022 to 16 JUN 2022

SC-1, 19 MAY 2022 to 16 JUN 2022