

ALTUS, OKLAHOMA

# RNAV (GPS) Z RWY 36R

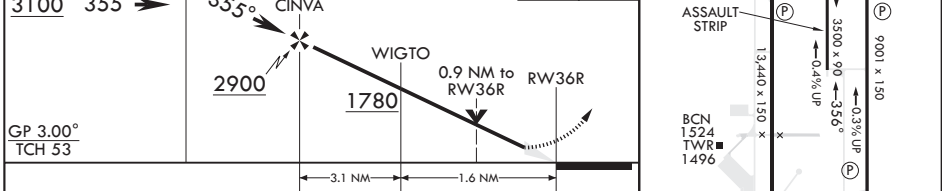
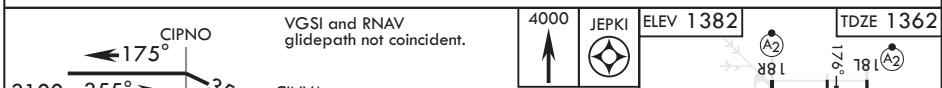
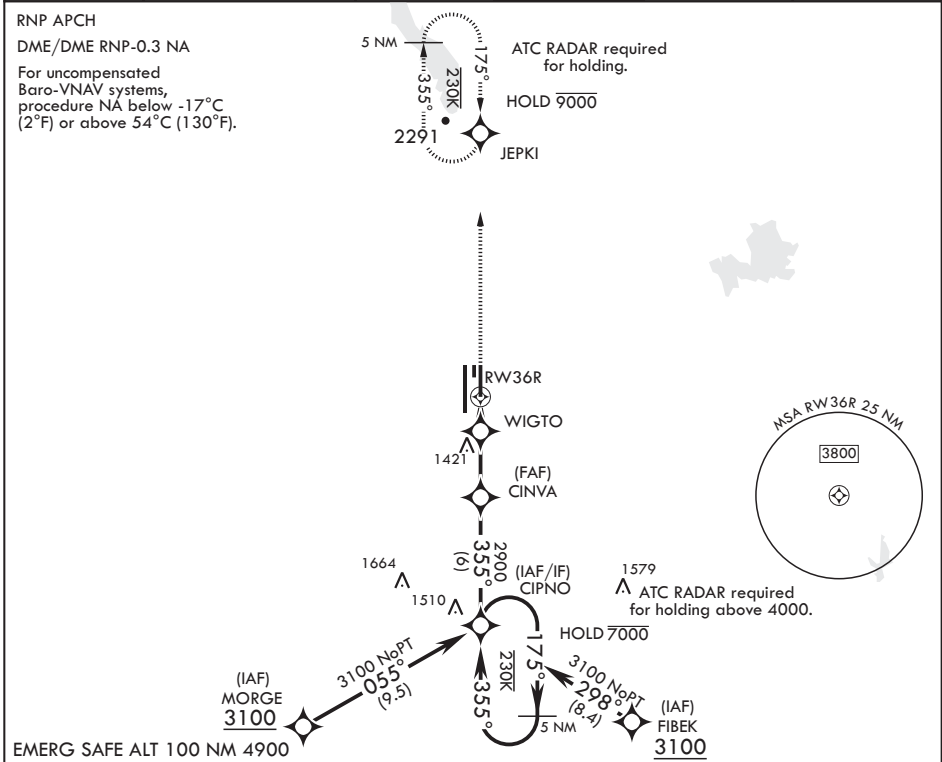
APCH CRS	Rwy Idg	<b>9001</b>
<b>355°</b>	TDZE	<b>1362</b>
	Arpt Elev	<b>1382</b>

AL-482 (USAF)

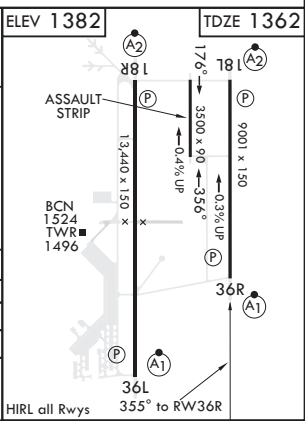
ALTUS AFB (KLTS)

<p><b>V</b> * When ALS inop increase RVR to 40, vis to 3/4 mile.                  ** When ALS inop increase CAT AB RVR to 55, vis to 1 mile; CAT CDE RVR 50, vis to 1 mile.                  *** Circling NA W of Rwy 36L-18R.</p>	<p>ALSF-1</p>	<p>MISSED APPROACH: Climb to 4000 direct JEPKI and hold.</p>
--	---------------	--

<p>ATIS★</p> <p><b>109.8 273.5</b></p>	<p>FORT WORTH CENTER</p> <p><b>133.5 350.35</b></p>	<p>APP CON</p> <p><b>125.1 353.7</b></p>	<p>TOWER★</p> <p><b>119.65 254.4</b></p>	<p>GND CON</p> <p><b>121.85 275.8</b></p>	<p>CLNC DEL</p> <p><b>120.65 284.7</b></p>
--	---	--	--	---	--



CATEGORY	A	B	C	D	E
LNAV/VNAV DA*	1612/24		250		(300-1/2)
LNAV MDA**	1700/24 338 (400-1/2)		1700/26 338 (400-1/2)		
<b>C</b> CIRCLING***	1780-1 398 (400-1)	1840-1 458 (500-1)	1860-1 1/2 478 (500-1 1/2)	2060-2 1/4 678 (700-2 1/4)	2160-2 3/4 778 (800-2 3/4)



ALTUS, OKLAHOMA  
Amdt 2 07OCT21

34°40'N - 99°16'W

ALTUS AFB (KLTS)

# RNAV (GPS) Z RWY 36R

SC-1, 19 MAY 2022 to 16 JUN 2022

SC-1, 19 MAY 2022 to 16 JUN 2022