

ALTUS, OKLAHOMA

VOR or TACAN RWY 18R

VORTAC LTS 109.8 Chan 35	APCH CRS 171°	Rwy Idg 13,440 TDZE 1379 Arprt Elev 1382
--	-------------------------	---

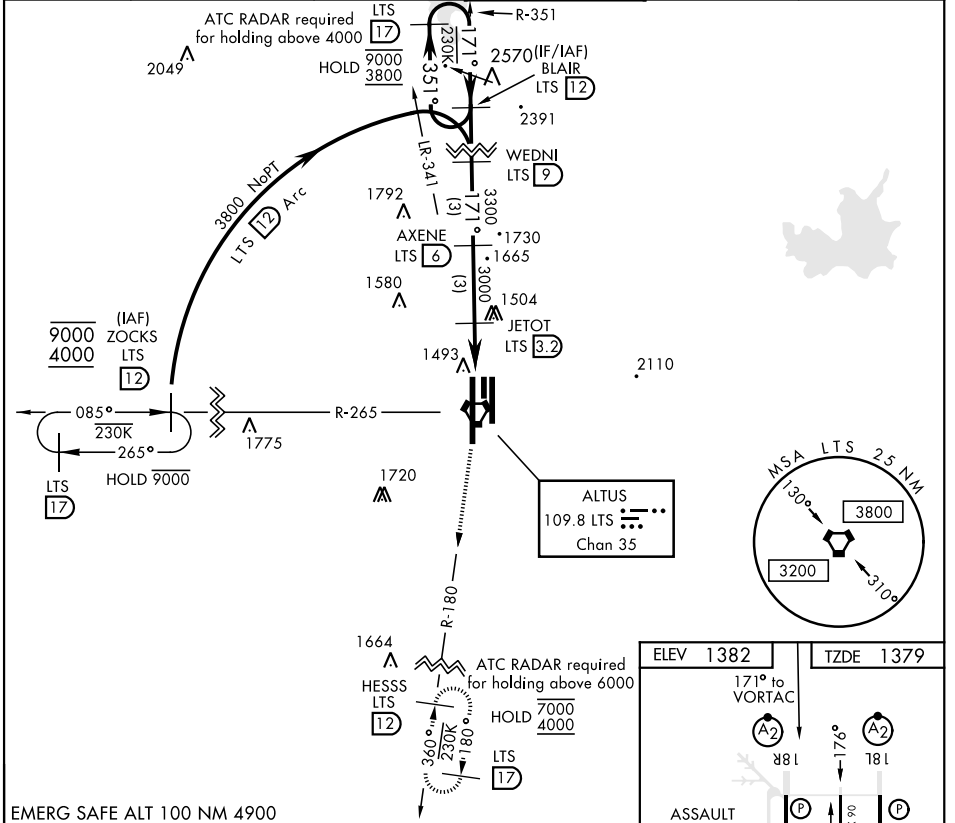
AL-482 [USAF]

ALTUS AFB (KLTS)

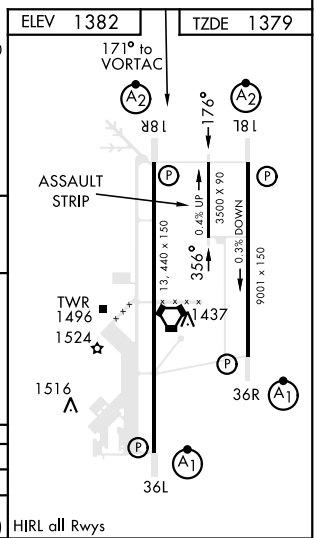
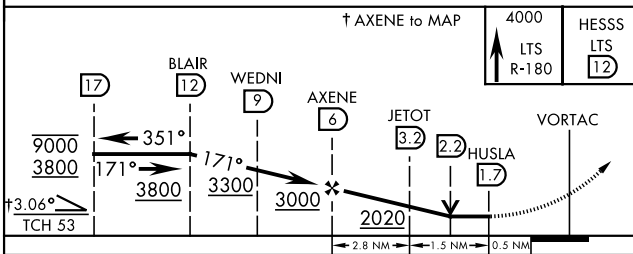
DME required.

A2 MISSED APPROACH: Climb to 4000 on LTS VORTAC R-180 to HESSS and hold.

ATIS ★ 109.8 273.5	FORT WORTH CENTER 133.5 350.35	APP CON 125.1 353.7	TOWER ★ 119.65 254.4	GND CON 121.85 275.8	CLNC DEL 120.65 284.7
------------------------------	--	-------------------------------	--------------------------------	--------------------------------	---------------------------------



EMERG SAFE ALT 100 NM 4900



CATEGORY	A	B	C	D	E
S-18R*	1760/40	381 (400-3/4)	1760/45	381	(400-7/8)
CIRCLING**	1780-1 398 (400-1)	1840-1 458 (500-1)	1860-1 1/2 478 (500-1 1/2)	2060-2 1/4 678 (700-2 1/4)	2160-2 3/4 778 (800-2 3/4)

HIRL all Rwys

ALTUS, OKLAHOMA

34° 40' N-99° 16' W

ALTUS AFB (KLTS)

Amtd 3 07OCT21

VOR or TACAN RWY 18R

SC-1, 19 MAY 2022 to 16 JUN 2022

SC-1, 19 MAY 2022 to 16 JUN 2022