

ALTUS, OKLAHOMA

VOR or TACAN RWY 36L

ALTUS AFB (KLTS)

VORTAC LTS 109.8 Chan 35	APCH CRS 360°	Rwy Idg 13,440 TDZE 1354 Arprt Elev 1382
--	-------------------------	---

AL-482 [USAF]

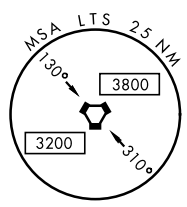
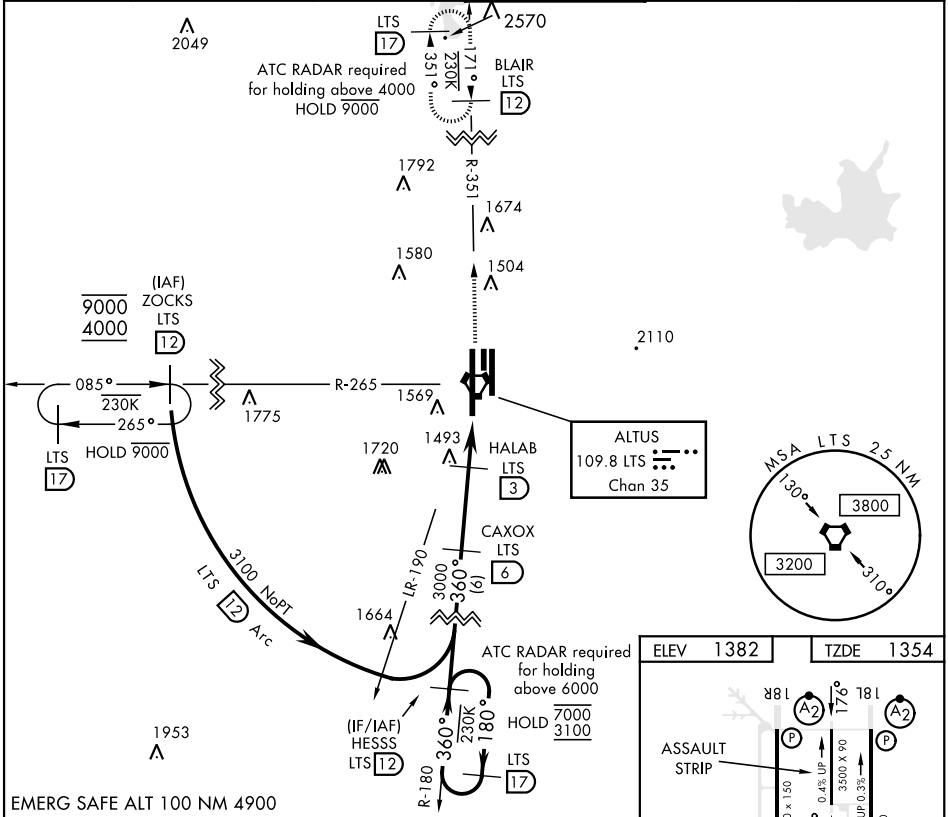
DME required.



MISSED APPROACH: Climb to 4000 on LTS VORTAC R-351 to BLAIR and hold.

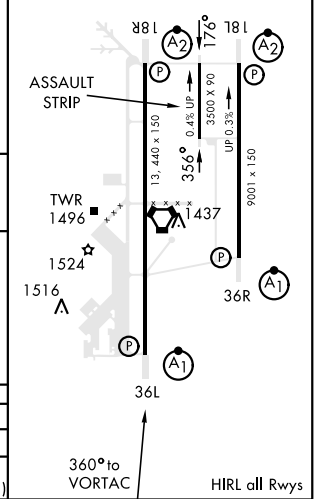
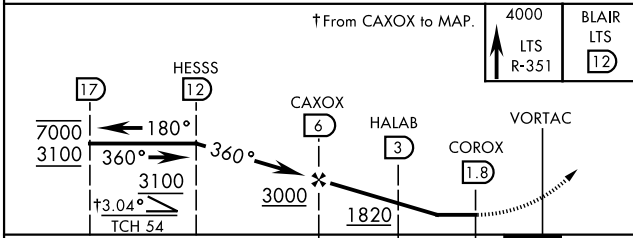
▼ * When ALS inop, increase CAT AB RVR to 55 and vis to 1 mile, CAT CDE RVR to 60 and vis to 1½ miles.
 ** Circling not authorized W of Rwy 18R-36L.

ATIS ★ 109.8 273.5	FORT WORTH CENTER 133.5 350.35	APP CON 125.1 353.7	TOWER ★ 119.65 254.4	GND CON 121.85 275.8	CLNC DEL 120.65 284.7
------------------------------	--	-------------------------------	--------------------------------	--------------------------------	---------------------------------



ELEV 1382	TZDZE 1354
-----------	------------

EMERG SAFE ALT 100 NM 4900



CATEGORY	A	B	C	D	E
S-36L*	1760/24	406 (400-½)	1760/40	406 (400-¾)	
CIRCLING**	1780-1 398 (400-1)	1840-1 458 (500-1)	1860-1½ 478 (500-1½)	2060-2¼ 678 (700-2¼)	2160-2¾ 778 (800-2¾)

ALTUS, OKLAHOMA

34°40'N-99°16'W

ALTUS AFB (KLTS)

Amdt 3 07OCT21

VOR or TACAN RWY 36L

SC-1, 19 MAY 2022 to 16 JUN 2022

SC-1, 19 MAY 2022 to 16 JUN 2022