

ALTUS, OKLAHOMA

VOR or TACAN-D

VORTAC LTS 109.8 Chan 35	APCH CRS 293°	Rwy Idg TDZE Arprt Elev N/A N/A 1382
--	-------------------------	--

AL-482 [USAF]

ALTUS AFB (KLTS)

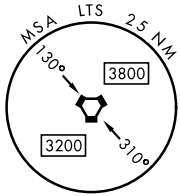
RADAR, DME required.

MISSED APPROACH: Climb to 2200, then climbing right turn to 4000, intercept LTS TACAN R-035 to JATTU and hold.

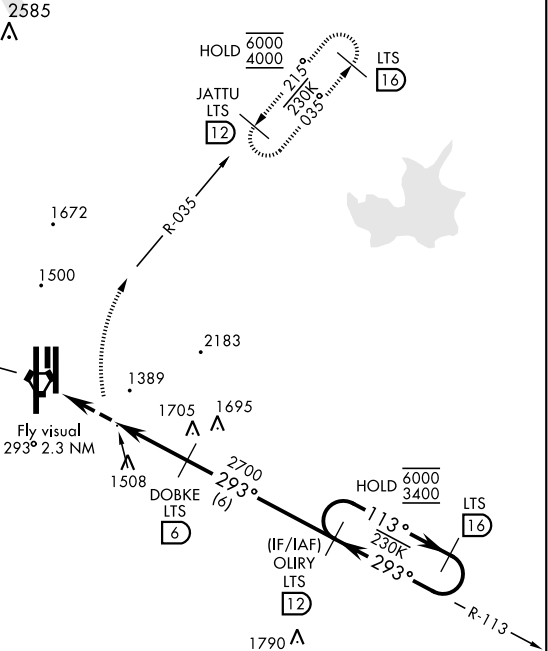
ATIS ★ 109.8 273.5	FORT WORTH CENTER 133.5 350.35	APP CON 125.1 353.7	TOWER ★ 119.65 254.4	GND CON 121.85 275.8	CLNC DEL 120.65 284.7
------------------------------	--	-------------------------------	--------------------------------	--------------------------------	---------------------------------

2055

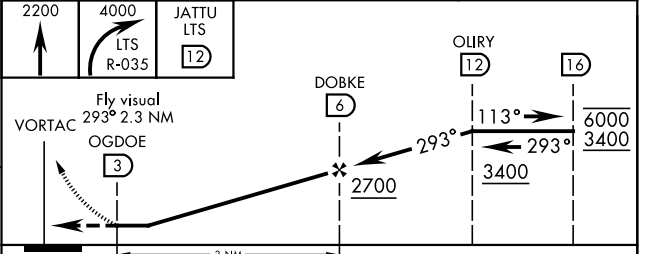
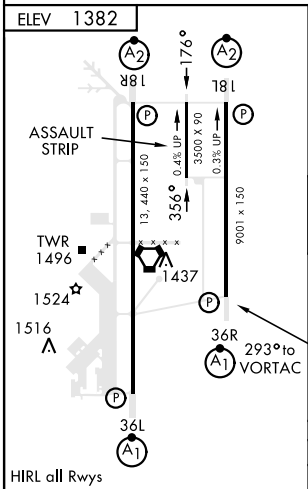
FOR USE BY 97 AMW ACFT ONLY



ALTUS
109.8 LTS
Chan 35



EMERG SAFE ALT 100 NM 4900



CATEGORY	D	E
<input checked="" type="checkbox"/> CIRCLING	2060-3 678 (700-3)	2160-3 778 (800-3)

ALTUS, OKLAHOMA
Amdt 2 04NOV21

34°40'N-99°16'W

ALTUS AFB (KLTS)

VOR or TACAN-D

SC-1, 19 MAY 2022 to 16 JUN 2022

SC-1, 19 MAY 2022 to 16 JUN 2022