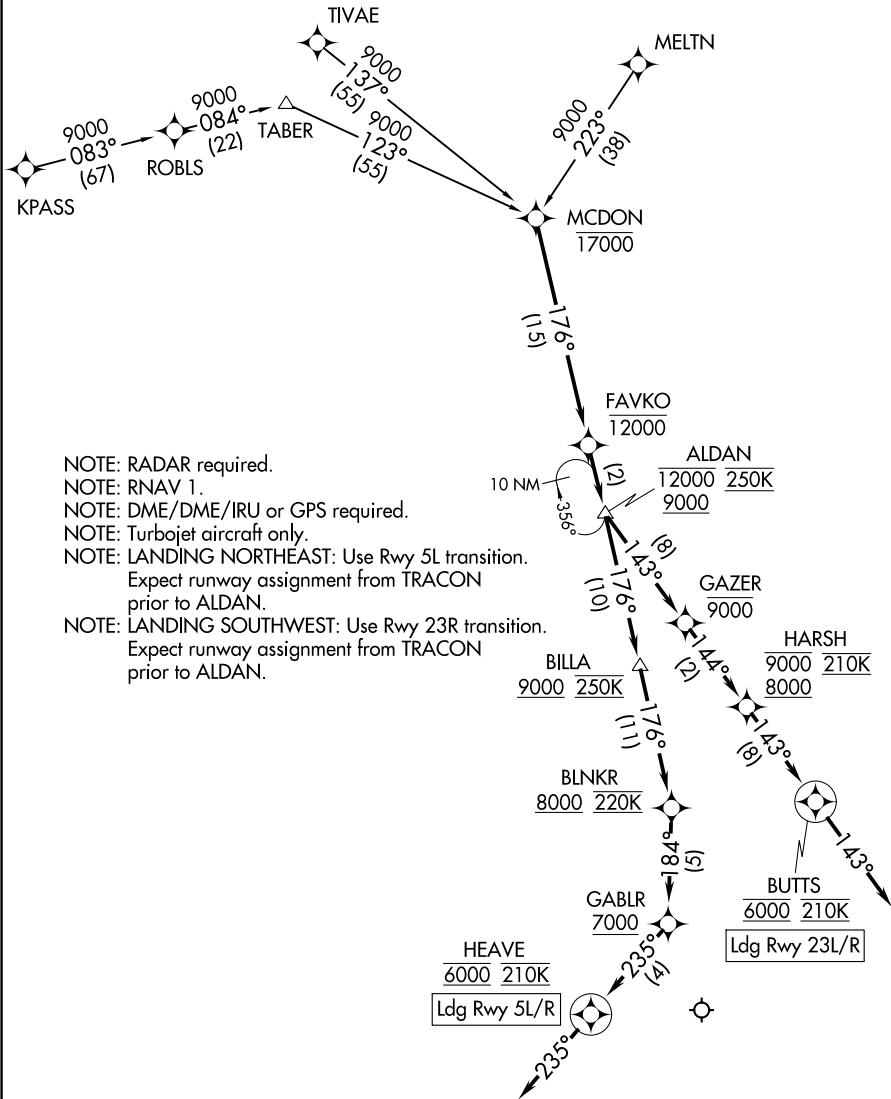


ALDAN THREE ARRIVAL (RNAV)

RALEIGH APP CON
127.675 307.9
D-ATIS
123.8



- NOTE: RADAR required.
- NOTE: RNAV 1.
- NOTE: DME/DME/IRU or GPS required.
- NOTE: Turbojet aircraft only.
- NOTE: LANDING NORTHEAST: Use Rwy 5L transition. Expect runway assignment from TRACON prior to ALDAN.
- NOTE: LANDING SOUTHWEST: Use Rwy 23R transition. Expect runway assignment from TRACON prior to ALDAN.

(NARRATIVE ON FOLLOWING PAGE)

NOTE: Chart not to scale.

ALDAN THREE ARRIVAL (RNAV)

SE-2, 19 MAY 2022 to 16 JUN 2022

SE-2, 19 MAY 2022 to 16 JUN 2022