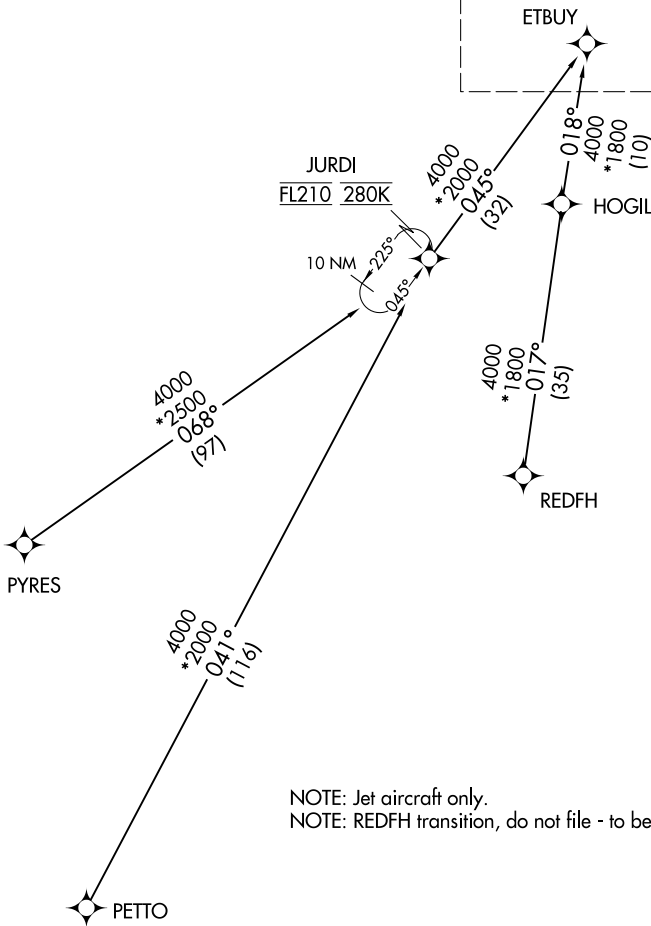


DMSTR ONE ARRIVAL (RNAV) Transition Routes

RALEIGH APP CON
127.675 307.9
D-ATIS
123.8

RNAV 1-DME/DME/IRU or GPS.
RADAR required.

See following page
for Arrival Routes



NOTE: Jet aircraft only.
NOTE: REDFH transition, do not file - to be assigned by ATC.

NOTE: Chart not to scale.

JURDI TRANSITION (JURDI.DMSTR1)
PETTO TRANSITION (PETTO.DMSTR1)
PYRES TRANSITION (PYRES.DMSTR1)
REDFH TRANSITION (REDFH.DMSTR1)

(CONTINUED ON FOLLOWING PAGE)

SE-2, 19 MAY 2022 to 16 JUN 2022

SE-2, 19 MAY 2022 to 16 JUN 2022