

LOC/DME I-DMP 111.7 Chan 54	APP CRS 234°	Rwy Idg TDZE Apt Elev 10000 409 435
---	------------------------	---

ILS or LOC RWY 23R

RALEIGH-DURHAM INTL (RDU)

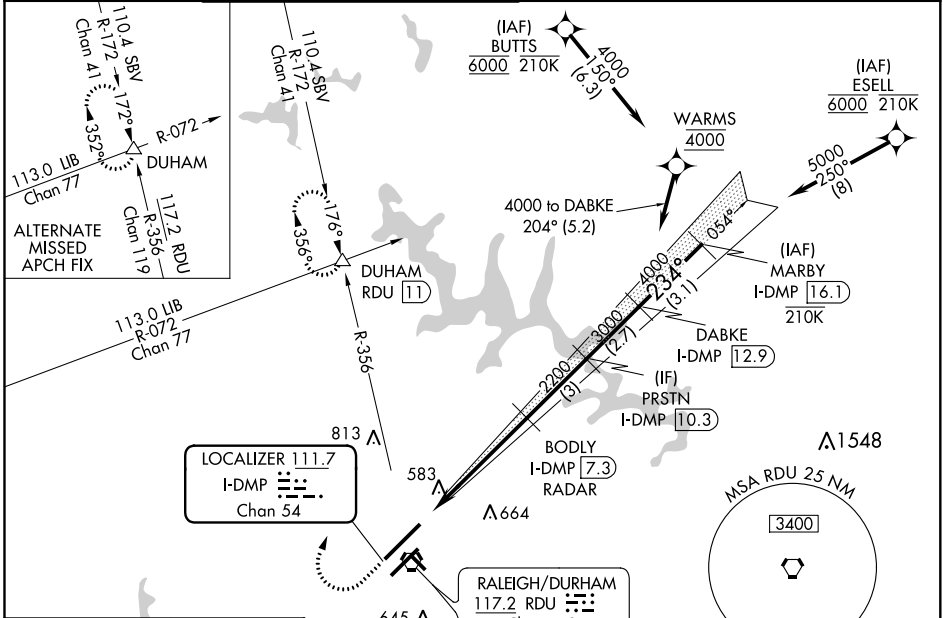
RNAV 1-DME/DME/IRU or GPS or RADAR required for procedure entry. RADAR or DME required for LOC only.

Simultaneous approach authorized. For inop ALS increase S-LOC 23R Cat C/D visibility to 1½ SM.

ALSF-2

MISSED APPROACH: Climb to 1000 then climbing right turn to 2200 on RDU VORTAC R-356 to DUHAM INT/RDU 11 DME and hold.

D-ATIS 123.8	RALEIGH APP CON 127.675 307.9	(EAST) RALEIGH TOWER (WEST) 127.45 257.8 119.3 257.8	(EAST) GND CON (WEST) 121.9 348.6 121.7 348.6	CLNC DEL 120.1	CPDLC
		Rwys 5R-23L and 14-32	Rwys 5R-23L and 14-32	Rwy 5L-23R	



ELEV 435	TDZE 409
REIL Rwy 32	234° 5.5 NM from FAF
MIRL Rwy 14-32	
HIRL Rwys 5R-23L and 5L-23R	
TDZ/CL Rwys 23R, 23L and 5L	

FAF to MAP 5.5 NM					
Knots	60	90	120	150	180
Min:Sec	5:30	3:40	2:45	2:12	1:50

1000	2200	RDU R-356	DUHAM	VGSI and ILS glidepath not coincident (VGSI Angle 3.00/TCH 69).		MARBY I-DMP [16.1]
*LOC only.		BODY I-DMP [7.3] RADAR	PRSTN I-DMP [10.3]	DABKE I-DMP [12.9]		
I-DMP [1.8]	*I-DMP [3.4]	2200	3000	4000	5000	GS 3.00° TCH 55
		1.6 NM	3.9 NM	3 NM	2.7 NM	3.1 NM
CATEGORY	A		B		C	
S-ILS 23R	609/18 200 (200-½)					
S-LOC 23R	980/24 571 (600-½)		980-1¼ 571 (600-1¼)			
CIRCLING	980-1 545 (600-1)		1020-1½ 585 (600-1½)		1180-2½ 745 (800-2½)	

SE-2, 19 MAY 2022 to 16 JUN 2022

SE-2, 19 MAY 2022 to 16 JUN 2022