

LOC/DME I-GKK <b>109.1</b> Chan 28	APP CRS <b>054°</b>	Rwy Idg TDZE Apt Elev <b>10000</b> <b>384</b> <b>435</b>
--	------------------------	---

# ILS or LOC RWY 5L

RALEIGH-DURHAM INTL (RDU)

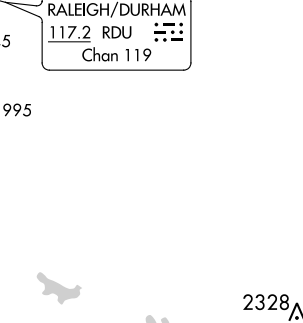
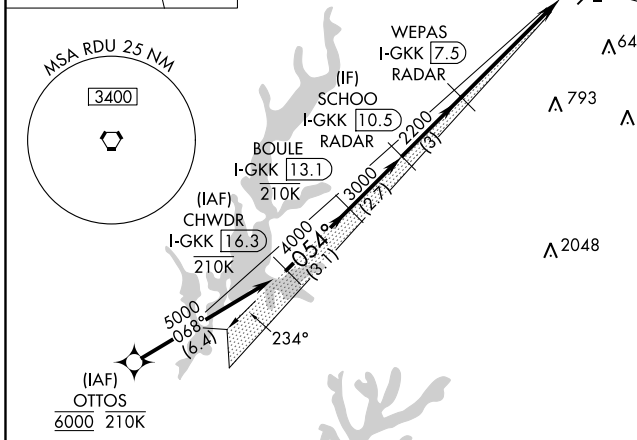
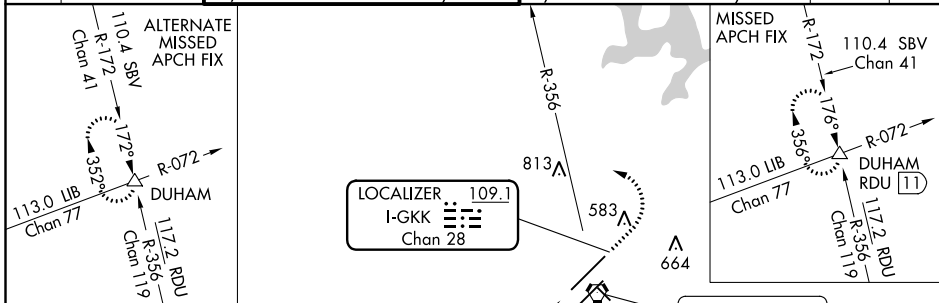
RNAV 1-DME/DME/IRU or GPS or RADAR required for procedure entry. DME or RADAR required for LOC only.

Simultaneous approach authorized.



MISSED APPROACH: Climb to 1000 then climbing left turn to 2200 on heading 310° and RDU VORTAC R-356 to DUHAM INT/RDU 11 DME and hold.

D-ATIS <b>123.8</b>	RALEIGH APP CON <b>127.675 307.9</b>	(EAST) RALEIGH TOWER (WEST) <b>127.45 257.8</b> <b>119.3 257.8</b> Rwys 5R-23L and 14-32    Rwy 5L-23R	(EAST) GND CON (WEST) <b>121.9 348.6</b> <b>121.7 348.6</b> Rwys 5R-23L and 14-32    Rwy 5L-23R	CLNC DEL <b>120.1</b>	CPDLC
------------------------	---	--	---	--------------------------	-------



CHWDR I-GKK 16.3	BOULE I-GKK 13.1	SCHOO I-GKK 10.5	WEPAS I-GKK 7.5	1000	2200	RDU R-356	DUHAM
5000-0.54°				↑	hdg 310°		△
GS 3.00° TCH 57	3000	*I-GKK 3.1	I-GKK 1.9				*LOC only.
VGSi and ILS glidepath not coincident (VGSi Angle 3.00/TCH 72).							
-3.1 NM-		-2.7 NM-		-3 NM-		-4.3 NM-	
-1.3 NM-							

ELEV 435	TDZE 384
REIL Rwy 32	MIRL Rwy 14-32
HIRL Rwys 5R-23L and 5L-23R	TDZ/CL Rwys 23R, 23L and 5L
0.54° 5.6 NM from FAF	
FAF to MAP 5.6 NM	
Knots	60 90 120 150 180
Min:Sec	5:36 3:44 2:48 2:14 1:52

CATEGORY	A	B	C	D
S-ILS 5L	598/18 214 (200-½)			
S-LOC 5L	840/24 456 (500-½)	840/45 456 (500-¾)		
CIRCLING	960-1 525 (600-1)	1020-1½ 585 (600-1½)	1180-2½ 745 (800-2½)	

SE-2, 19 MAY 2022 to 16 JUN 2022

SE-2, 19 MAY 2022 to 16 JUN 2022