

LOC/DME I-RDU <b>109.5</b> Chan 32	APP CRS <b>054°</b>	Rwy Idg <b>7500</b> TDZE <b>420</b> Apt Elev <b>435</b>
--	------------------------	---

# ILS or LOC RWY 5R

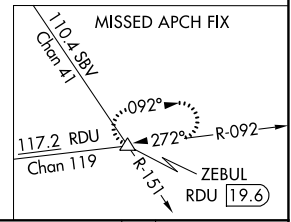
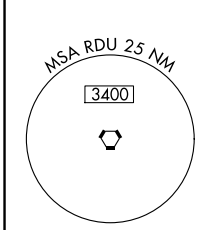
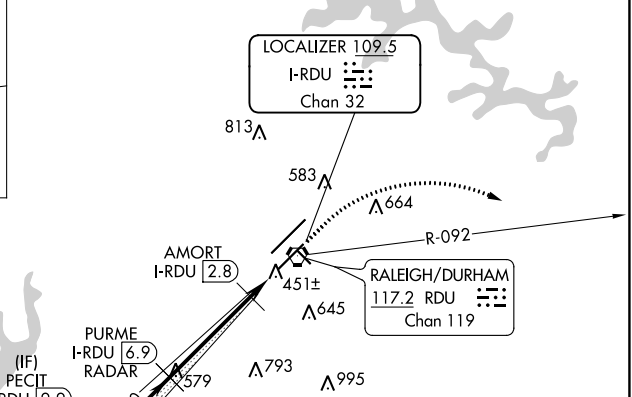
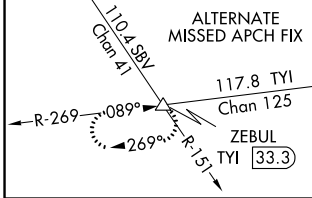
RALEIGH-DURHAM INTL (RDU)

RNAV 1-DME/DME/IRU or GPS or RADAR required for procedure entry. DME or RADAR required for LOC only.

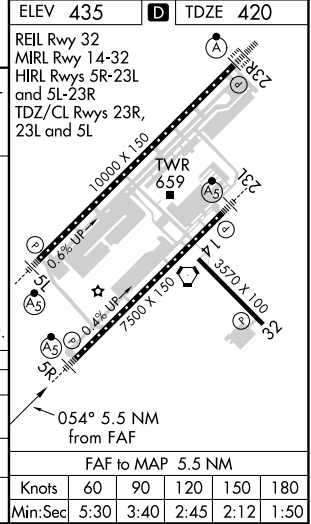
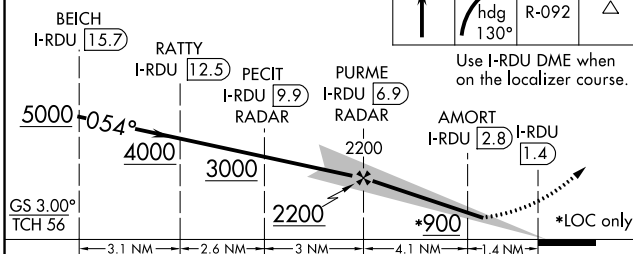
**MALSR**  
MISSED APPROACH: Climb to 1000 then climbing right turn to 2600 on heading 130° and on RDU VORTAC R-092 to ZEBUL INT/ RDU 19.6 DME and hold.

**Simultaneous approach authorized.**  
# RVR 1800 authorized with use of FD or AP or HUD to DA.

D-ATIS <b>123.8</b>	RALEIGH APP CON <b>127.675 307.9</b>	(EAST) RALEIGH TOWER (WEST) <b>127.45 257.8</b> <b>119.3 257.8</b> Rwys 5R-23L and 14-32   Rwy 5L-23R	(EAST) GND CON (WEST) <b>121.9 348.6</b> <b>121.7 348.6</b> Rwys 5R-23L and 14-32   Rwy 5L-23R	CLNC DEL <b>120.1</b>	CPDLC
------------------------	---	---	--	--------------------------	-------



VGSI and ILS glidepath not coincident (VGSI Angle 3.00/TCH 62).



CATEGORY	A	B	C	D
S-ILS 5R #	620/24		200 (200-½)	
S-LOC 5R	760/24 340 (400-½)		760/26 340 (400-½)	
CIRCLING	960-1 525 (600-1)		1020-1½ 1180-2½ 585 (600-1½) 745 (800-2½)	

SE-2, 19 MAY 2022 to 16 JUN 2022

SE-2, 19 MAY 2022 to 16 JUN 2022

ELEV 435	TDZE 420
REIL Rwy 32	MIRL Rwy 14-32
HIRL Rwys 5R-23L and 5L-23R	TDZ/CL Rwys 23R, 23L and 5L
FAF to MAP 5.5 NM	
Knots	60 90 120 150 180
Min:Sec	5:30 3:40 2:45 2:12 1:50