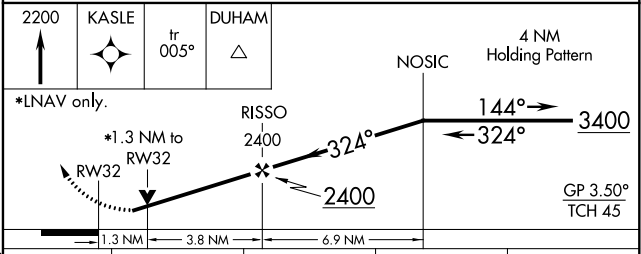
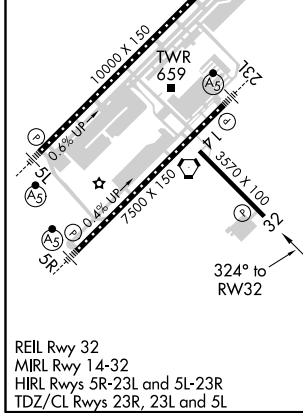
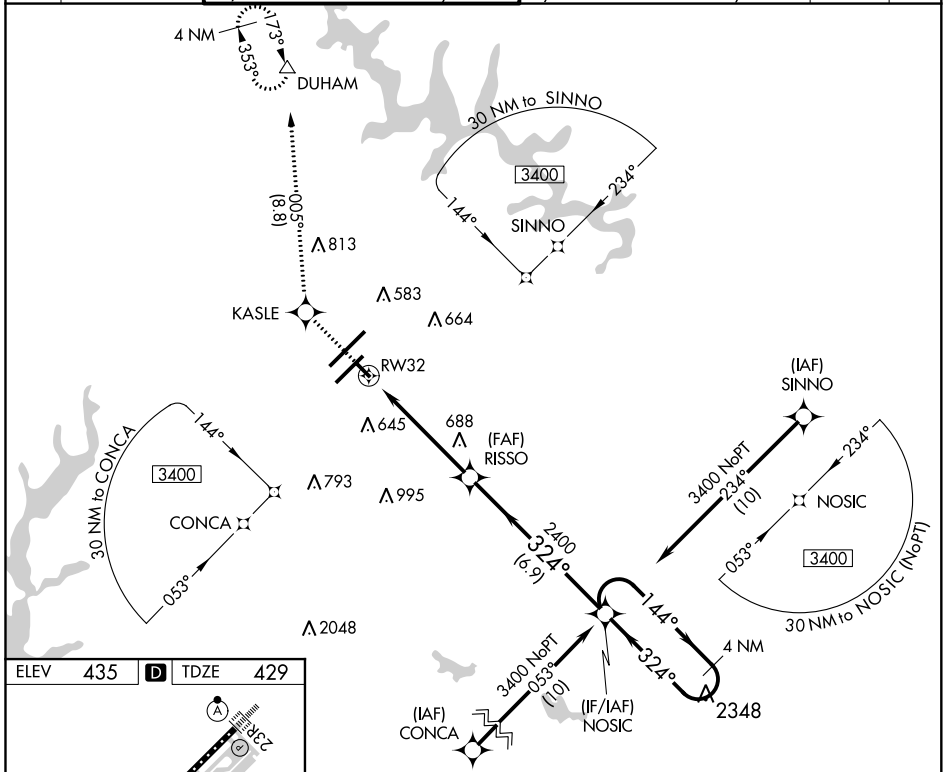


APP CRS	Rwy Idg	3570
324°	TDZE	429
	Apt Elev	435

RNAV (GPS) RWY 32

RALEIGH-DURHAM INTL (RDU)

RNP APCH.		Rwy 32 helicopter visibility reduction below 3/4 SM NA. Baro-VNAV NA below -15°C (5°F) or above 48°C (118°F).		MISSED APPROACH: Climb to 2200 direct KASLE and on track 005° to DUHAM and hold.			
D-ATIS	RALEIGH APP CON	(EAST) RALEIGH TOWER	(WEST)	(EAST) GND CON	(WEST)	CLNC DEL	CPDLC
123.8	127.675 307.9	127.45 257.8	119.3 257.8	121.9 348.6	121.7 348.6	120.1	
		Rwys 5R-23L and 14-32	Rwy 5L-23R	Rwys 5R-23L and 14-32	Rwy 5L-23R		



CATEGORY	A	B	C	D
LNAV/VNAV DA	820-1¼ 391 (400-1¼)			NA
LNAV MDA	1000-1	571 (600-1)	1000-1½ 571 (600-1½)	NA
C CIRCLING	1000-1¼	565 (600-1¼)	1040-1¾ 605 (700-1¾)	NA

SE-2, 19 MAY 2022 to 16 JUN 2022

SE-2, 19 MAY 2022 to 16 JUN 2022