

APP CRS	Rwy Idg	7500
234°	TDZE	435
	Apt Elev	435


RNAV (RNP) Z RWY 23L

RALEIGH-DURHAM INTL (RDU)

RNP AR APCH-GPS.

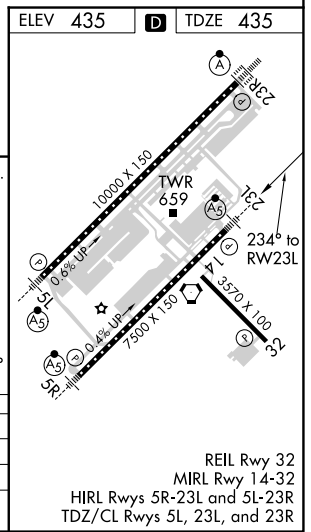
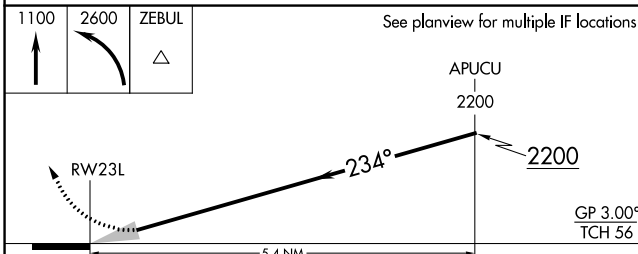
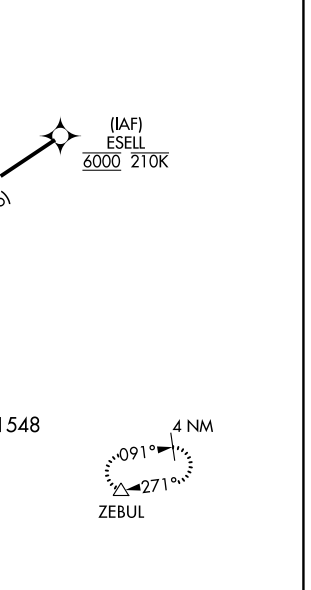
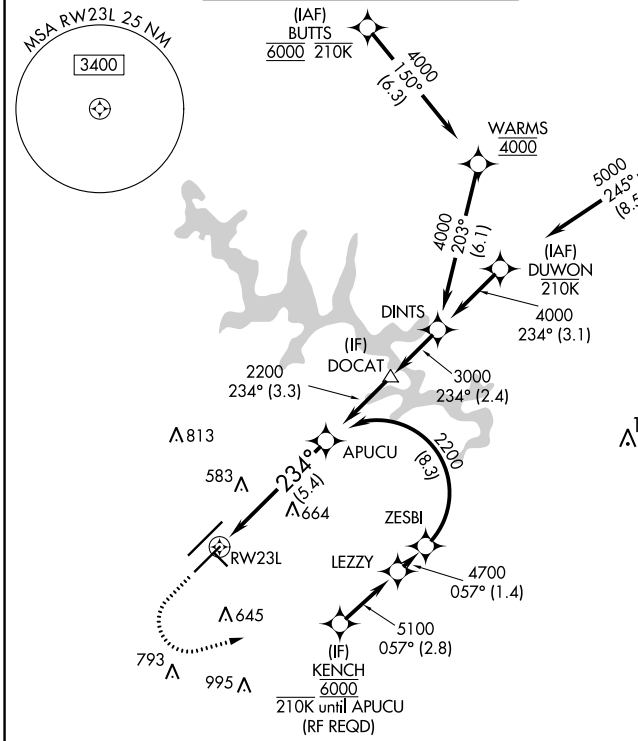
▼ For uncompensated Baro-VNAV systems, procedure NA below -12°C or above 54°C. Simultaneous approach authorized, except for arrivals at KENCH. For inop ALS, increase RNP 0.10 all Cats visibility to RVR 5500.

MALSR



MISSED APPROACH: Climb to 1100 then climbing left turn to 2600 direct ZEBUL and hold.

D-ATIS	RALEIGH APP CON	(EAST) RALEIGH TOWER (WEST)	(EAST) GND CON (WEST)	CLNC DEL	CPDLC
123.8	127.675 307.9	127.45 257.8 Rwys 5R-23L and 14-32	119.3 257.8 Rwy 5L-23R	121.9 348.6 Rwys 5R-23L and 14-32	121.7 348.6 Rwy 5L-23R
				120.1	



CATEGORY	A	B	C	D
RNP 0.10 DA		776/30 341 (400-5%)		
RNP 0.30 DA		826/35 391 (400-5%)		

AUTHORIZATION REQUIRED

SE-2, 19 MAY 2022 to 16 JUN 2022

SE-2, 19 MAY 2022 to 16 JUN 2022

REIL Rwy 32
MIRL Rwy 14-32
HIRL Rwys 5R-23L and 5L-23R
TDZ/CL Rwys 5L, 23L, and 23R