


APP CRS	Rwy Idg	10000
054°	TDZE	384
	Apt Elev	435

RNAV (RNP) Z RWY 5L

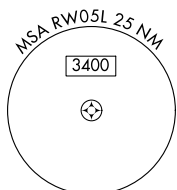
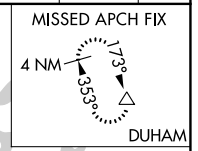
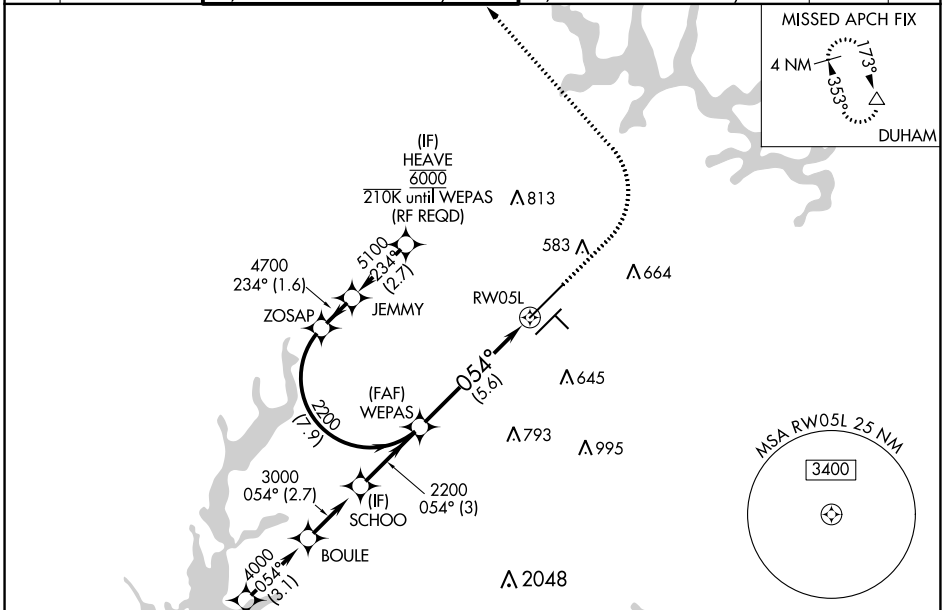
RALEIGH-DURHAM INTL (RDU)

RNP AR APCH-GPS.

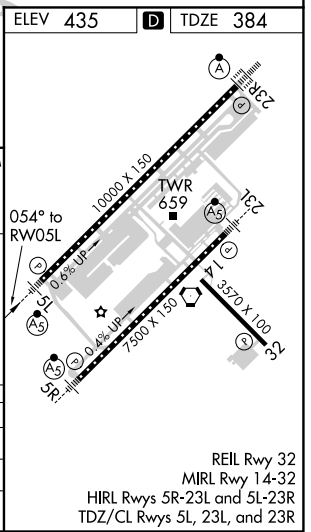
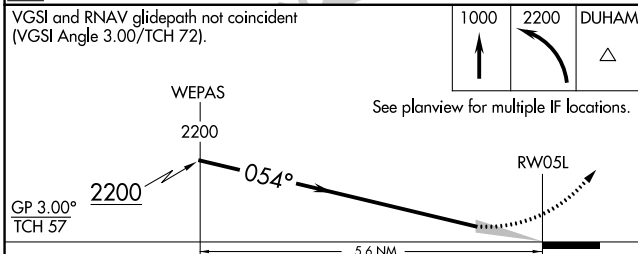
▼ For uncompensated Baro-VNAV systems, procedure NA below -12°C or above 54°C. Simultaneous approach authorized, except for arrivals at HEAVE. For inop ALS, increase RNP 0.10 all Cats visibility to RVR 4500.

MALSR  MISSED APPROACH: Climb to 1000 then climbing left turn to 2200 direct DUHAM and hold.

D-ATIS	RALEIGH APP CON	(EAST) RALEIGH TOWER (WEST)	(EAST) GND CON	(WEST)	CLNC DEL	CPDLC
123.8	127.675 307.9	127.45 257.8 Rwys 5R-23L and 1-4-32	119.3 257.8 Rwy 5L-23R	121.9 348.6 Rwys 5R-23L and 1-4-32	121.7 348.6 Rwy 5L-23R	120.1



(IAF) OTTOS 6000 210K
 (IF) HEAVE 6000
 210K until WEPAS (RF REQD) Δ 813
 4700 234° (1.6) ZOSAP
 5100 234° (2.7) JEMMY
 583 Δ 664
 RW05L Δ 645
 (FAF) WEPAS 2200 0.54° (5.9)
 3000 0.54° (2.7) SCHOO
 2200 0.54° (3) BOULE
 4000 0.54° (3.1) CHWDR
 5000 0.68° (16.4) OTTOS
 6000 210K



CATEGORY	A	B	C	D
RNP 0.10 DA		684/24	300 (300-½)	
RNP 0.30 DA		780/35	396 (400-⅙)	

AUTHORIZATION REQUIRED

REIL Rwy 32
 MIRL Rwy 1-4-32
 HIRL Rwys 5R-23L and 5L-23R
 TDZ/CL Rwys 5L, 23L, and 23R

SE-2, 19 MAY 2022 to 16 JUN 2022

SE-2, 19 MAY 2022 to 16 JUN 2022