

APP CRS	Rwy Idg	7500
054°	TDZE	420
	Apt Elev	435

RNAV (RNP) Z RWY 5R

RALEIGH-DURHAM INTL (RDU)

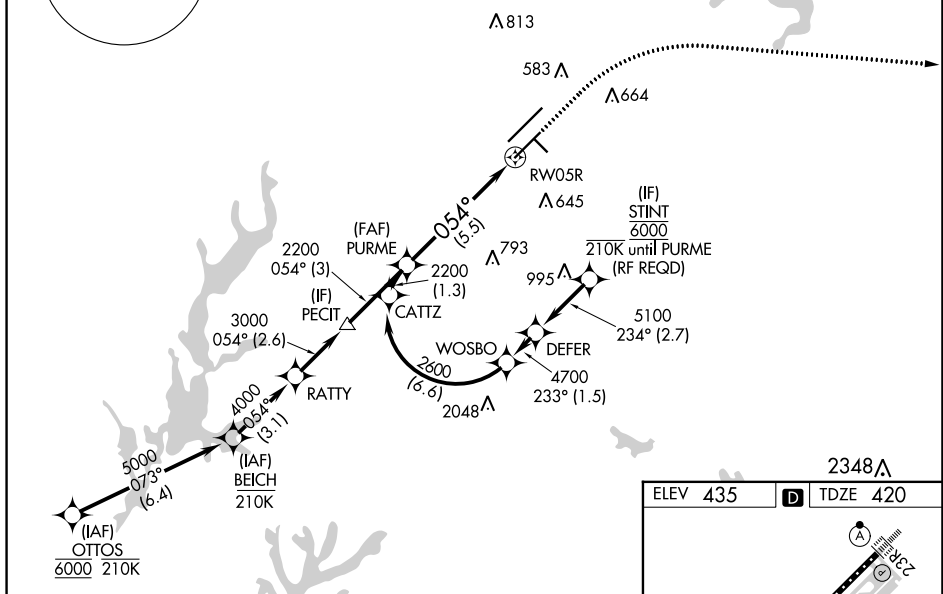
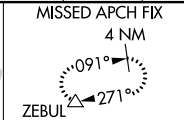
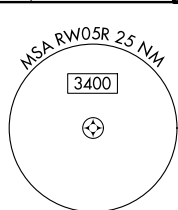
RNP AR APCH-GPS.

▼ For uncompensated Baro-VNAV systems, procedure NA below -12°C or above 54°C.
For inop ALS, increase RNP 0.30 all Cais visibility to RVR 4500. Simultaneous approach authorized, except for arrivals at STINT.

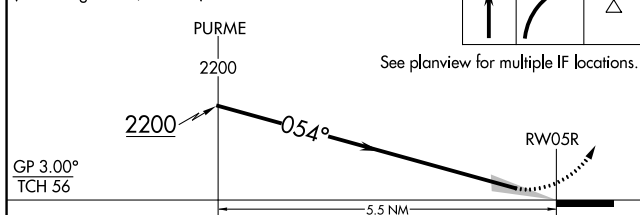


MISSED APPROACH: Climb to 1000 then climbing right turn to 2600 direct ZEBUL and hold.

D-ATIS	RALEIGH APP CON	(EAST) RALEIGH TOWER (WEST)	(EAST) GND CON	(WEST)	CLNC DEL	CPDLC
123.8	127.675 307.9	127.45 257.8 Rwys 5R-23L and 1-4-32	119.3 257.8 Rwy 5L-23R	121.9 348.6 Rwys 5R-23L and 1-4-32	121.7 348.6 Rwy 5L-23R	120.1

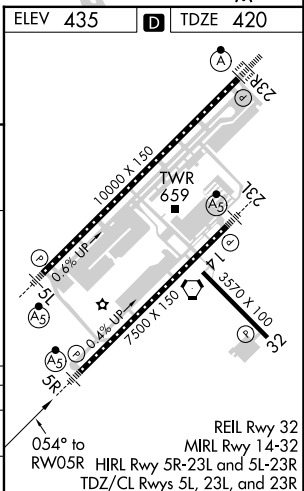


VGSI and RNAV glidepath not coincident (VGSI Angle 3.00/TCH 62).



CATEGORY	A	B	C	D
RNP 0.30 DA	692/24 272 (300-½)			

AUTHORIZATION REQUIRED



SE-2, 19 MAY 2022 to 16 JUN 2022

SE-2, 19 MAY 2022 to 16 JUN 2022