

WAAS CH 48813 W05A	APP CRS 054°	Rwy Idg 10000 TDZE 384 Apt Elev 435
----------------------------------------	------------------------	----------------------------------------------------------------


RNAV (GPS) Y RWY 5L

RALEIGH-DURHAM INTL (RDU)

RNP APCH-GPS.

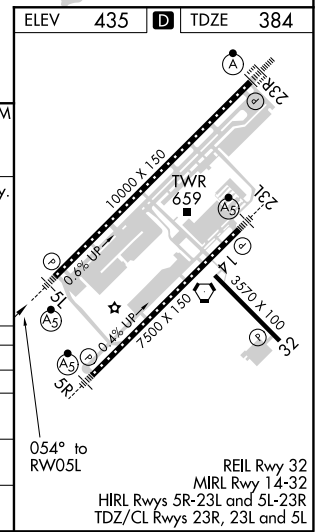
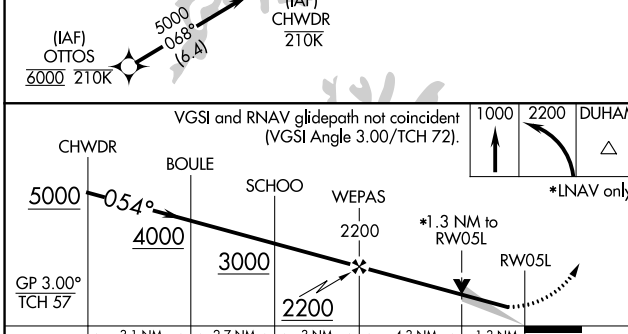
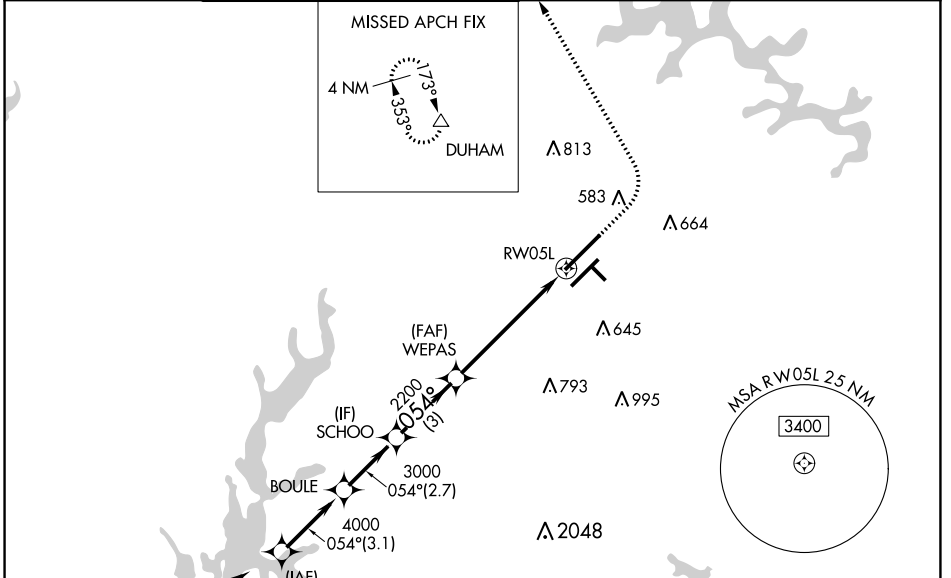
Simultaneous approach authorized. LNAV procedure NA during simultaneous operations. For uncompensated Baro-VNAV systems, LNAV/VNAV NA below -12°C or above 54°C. For inop ALS, increase LNAV/VNAV all Cats visibility to RVR 5500. Use of FD or AP required during simultaneous operations.

MALSR



MISSED APPROACH: Climb to 1000 then climbing left turn to 2200 direct DUHAM and hold.

D-ATIS	RALEIGH APP CON	(EAST) RALEIGH TOWER (WEST)	(EAST) GND CON (WEST)	CLNC DEL	CPDLC
123.8	127.675 307.9	127.45 257.8 Rwys 5R-23L and 14-32	119.3 257.8 Rwy 5L-23R	121.9 348.6 Rwys 5R-23L and 14-32	121.7 348.6 Rwy 5L-23R



CATEGORY	A	B	C	D
LPV DA		598/18	214 (200-1/2)	
LNNAV/VNAV DA		748/35	364 (400-3/8)	
LNNAV MDA	840/24	456 (500-1/2)	840/45	456 (500-7/8)
CIRCLING	960-1	525 (600-1)	1020-1 1/2	1180-2 1/2
			585 (600-1/2)	745 (800-2/2)

SE-2, 19 MAY 2022 to 16 JUN 2022

SE-2, 19 MAY 2022 to 16 JUN 2022