

LOC I-COE 110.7	APP CRS 051°	Rwy Idg 7400
		TDZE 2290
		Apt Elev 2320

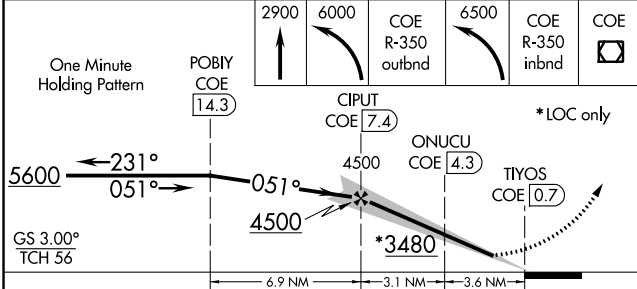
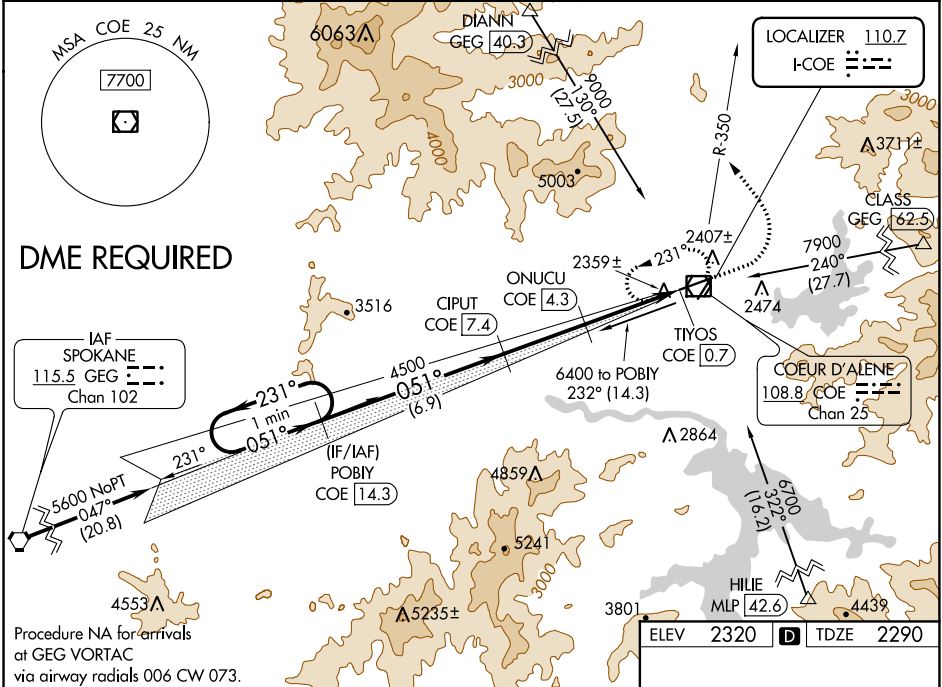
ILS or LOC/DME RWY 6

COEUR D'ALENE/PAPPY BOYINGTON FLD (COE)

⚠ DME from COE VOR/DME. Simultaneous reception of I-COE and COE DME required. Autopilot coupled approach NA below 2840. When local altimeter setting not received, use Spokane Intl altimeter setting and increase all DA/MDA 80 feet and all visibilities ¼ mile. Circling Rwy 2, NA at night. Circling NA for Cat D southeast of Rwy 6-24.

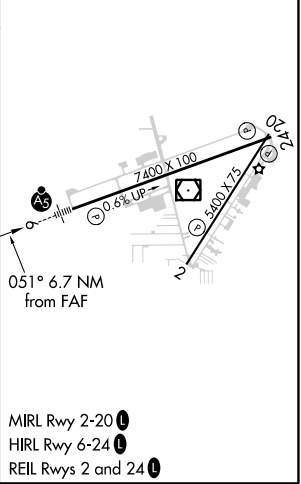
MALS MISSED APPROACH: Climb to 2900 then climbing left turn to 6000 via COE R-350 outbound then climbing left turn to 6500 via COE R-350 inbound to COE VOR/DME and hold.

AWOS-3PT 135.075	SPOKANE APP CON 132.1 263.0	UNICOM 122.8 (CTAF)
----------------------------	---------------------------------------	-------------------------------



ELEV 2320	D	TDZE 2290
-----------	----------	-----------

CATEGORY	A	B	C	D
S-ILS 6		2490-½	200 (200-½)	
S-LOC 6	2860-½	570 (600-½)	2860-1 570 (600-1)	2860-1¼ 570 (600-1¼)
CIRCLING	2860-1 540 (600-1)	2880-1 560 (600-1)	3020-2 700 (700-2)	3180-2¾ 860 (900-2¾)



NW-1, 19 MAY 2022 to 16 JUN 2022

NW-1, 19 MAY 2022 to 16 JUN 2022