

APP CRS	Rwy Idg	5400
354°	TDZE	2311
	Apt Elev	2320

RNAV (GPS) RWY 2

COEUR D'ALENE/PAPPY BOYINGTON FLD (COE)

RNP APCH-GPS.

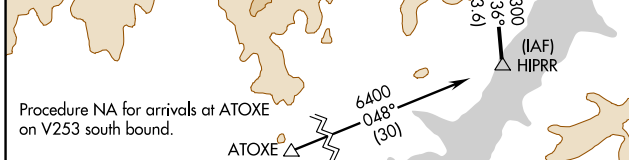
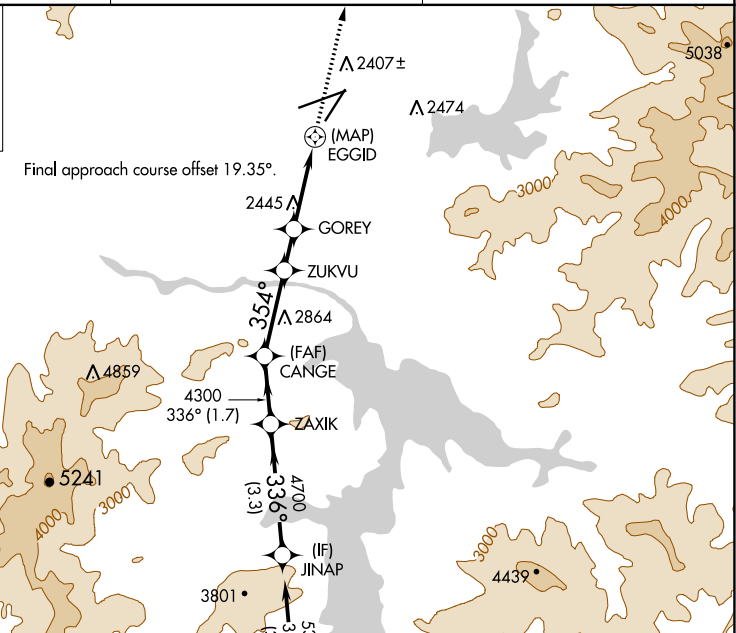
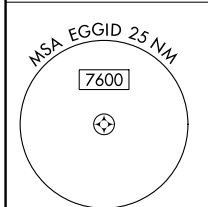
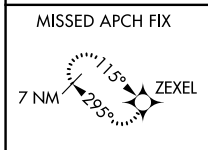
▼ Rwy 2 helicopter visibility reduction below 1 SM NA.
 ▲ Straight-in Rwy 2 NA at night, Circling Rwy 2 NA at night.

MISSED APPROACH: Climb to 7000 direct ZEXEL and hold, continue climb-in-hold to 7000.

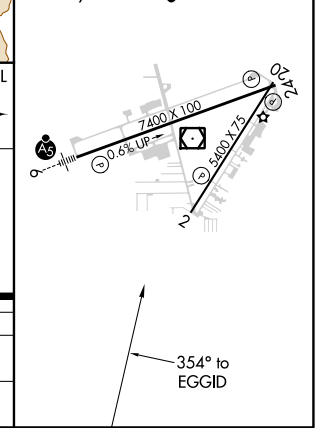
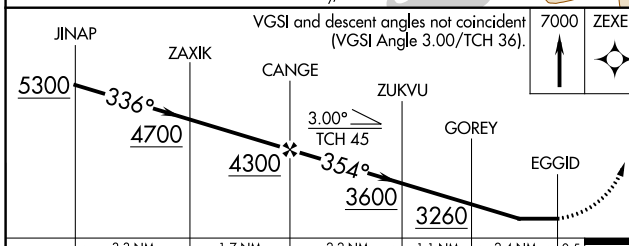
AWOS-3PT
135.075

SPOKANE APP CON
132.1 263.0

UNICOM
122.8 (CTAF) 0



ELEV 2320	D	TDZE 2311
HIRL Rwy 6-24	0	
MIRL Rwy 2-20	0	
REIL Rws 2 and 24	0	



CATEGORY	A	B	C	D
LNVA MDA	2700-1	389 (400-1)	2700-1 $\frac{1}{8}$	389 (400-1 $\frac{1}{8}$)
C CIRCLING	2740-1 420 (500-1)	2880-1 560 (600-1)	3020-2 700 (700-2)	3940-3 1620 (1700-3)

NW-1, 19 MAY 2022 to 16 JUN 2022

NW-1, 19 MAY 2022 to 16 JUN 2022