

WAAS CH 70608 W06A	APP CRS 051°	Rwy Idg 7400 TDZE 2291 Apt Elev 2320
--	------------------------	---

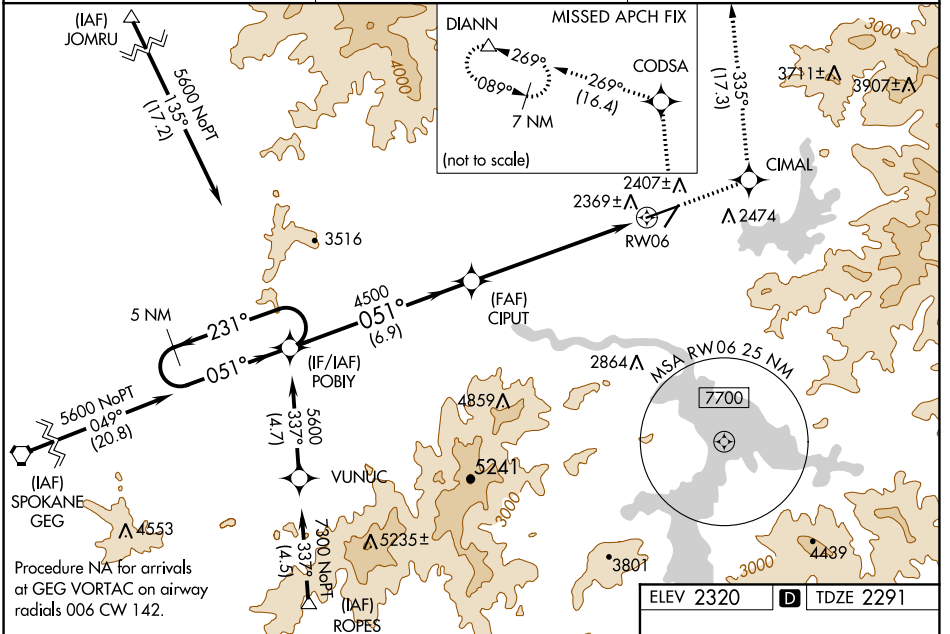
RNAV (GPS) RWY 6

COEUR D'ALENE/PAPPY BOYINGTON FLD (COE)

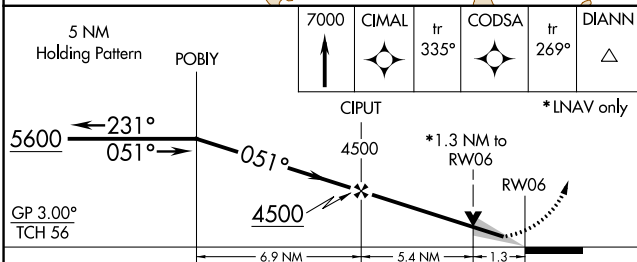
⚠ For uncompensated Baro-VNAV systems, LNAV/VNAV NA below -21°C (-5°F) or above 53°C (127°F). DME/DME RNP-0.3 NA. When local altimeter setting not received, use Spokane Intl altimeter setting and increase all DA/MDA 80 feet. Increase LNAV/VNAV all Cats visibility ¼ mile, LNAV Cat C/D visibility ⅓ mile, and Circling Cat C visibility ½ mile. Baro-VNAV and VDP NA when using Spokane Intl altimeter setting. Night landing: Rwy 2 NA. Circling NA for Cat D southeast of Rwy 6-24.

MALSR
MISSED APPROACH: Climb to 7000 direct CIMAL and on track 335° to CODSA and on track 269° to DIANN and hold.

AWOS-3PT 135.075	SPOKANE APP CON 132.1 263.0	UNICOM 122.8 (CTAF)
----------------------------	---------------------------------------	-------------------------------

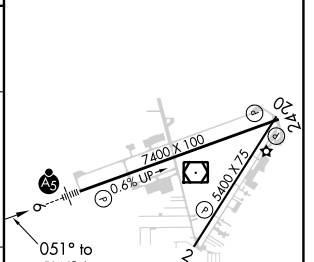


Procedure NA for arrivals at GEG VORTAC on airway radials 006 CW 142.



ELEV 2320	D	TDZE 2291
-----------	----------	-----------

CATEGORY	A	B	C	D
LPV DA		2491-½	200 (200-½)	
LNAV/VNAV DA		2654-¾	363 (400-¾)	
LNAV MDA	2740-½	449 (500-½)	2740-1	449 (500-1)
CIRCLING	2740-1 420 (500-1)	2880-1 560 (600-1)	3020-2 700 (700-2)	3180-2¾ 860 (900-2¾)



MIRL Rwy 2-20	ⓘ
HIRL Rwy 6-24	ⓘ
REIL Rws 2 and 24	ⓘ

NW-1, 19 MAY 2022 to 16 JUN 2022

NW-1, 19 MAY 2022 to 16 JUN 2022