

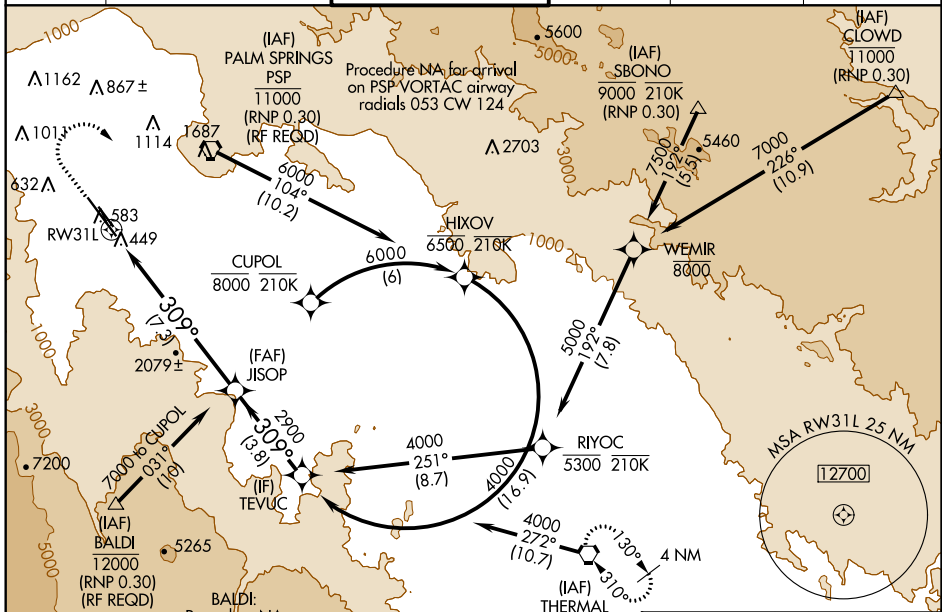
APP CRS	Rwy Idg	8500
309°	TDZE	430
	Apt Elev	477

RNAV (RNP) Y RWY 31L

PALM SPRINGS INTL (PSP)

RNP AR APCH.		MISSED APPROACH: Climb to 1800, then climbing right turn to 4000 direct TRM VORTAC and hold.
<p>▽ Missed approach requires minimum climb of 340' per NM to 3000. For uncompensated Baro-VNAV systems, procedure NA below 2°C or above 54°C.</p>		

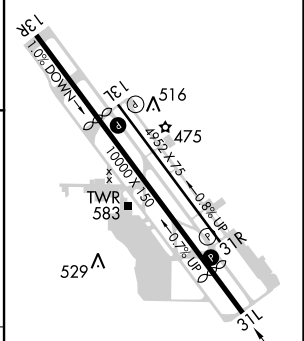
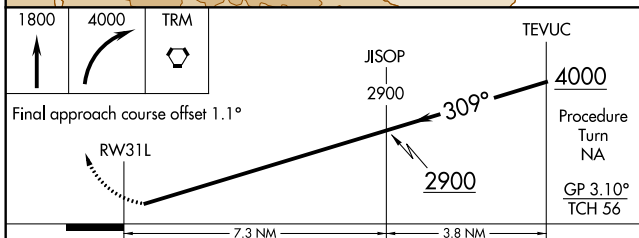
ATIS	SOCAL APP CON *	PALM SPRINGS TOWER *	GND CON	CLNC DEL	UNICOM
124.65	126.7 370.95 135.275 251.1	119.7 (CTAF) 0 377.05	121.9	128.35	122.95



SW-3, 19 MAY 2022 to 16 JUN 2022

SW-3, 19 MAY 2022 to 16 JUN 2022

ELEV	477	D	TDZE	430
------	------------	----------	------	------------



CATEGORY	A	B	C	D
RNP 0.30 DA	734-1 304 (300-1)			

AUTHORIZATION REQUIRED

HIRL Rwy 13R-31L
 MIRL Rwy 13L-31R
 REL Rwy 13R and 31L
 REL Rwy 13L and 31R