

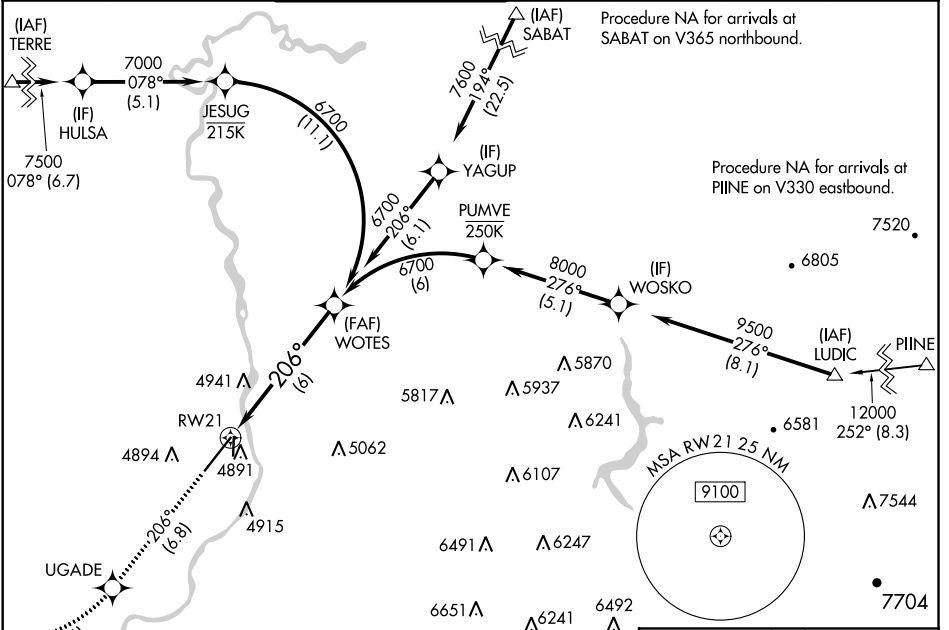
RNAV (RNP) Z RWY 21

IDAHO FALLS RGNL (IDA)

APP CRS	Rwy Idg	9002
206°	TDZE	4735
	Apt Elev	4744

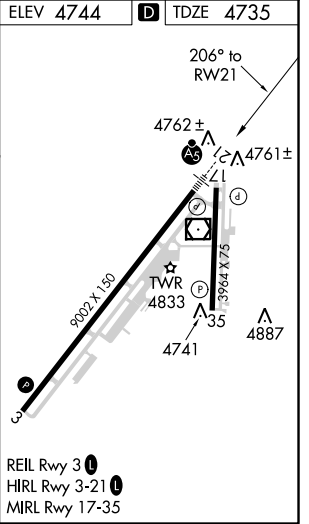
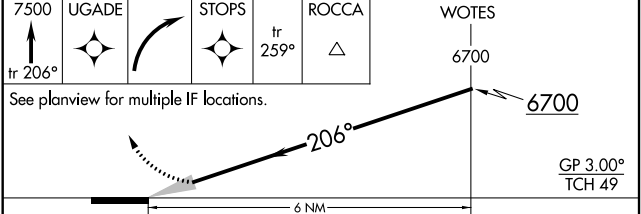
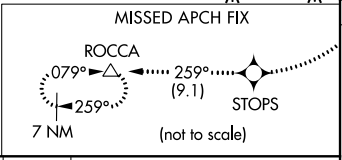
RNP AR APCH-GPS.	MALSR	MISSED APPROACH: Climb to 7500 on track 206° to YAGUP, right turn to STOPS, and on track 259° to ROCCA and hold.
<p>For uncompensated Baro-VNAV systems, procedure NA below -27°C or above 54°C. For inop ALS, increase RNP 0.11 visibility all Cats to RVR 4500.</p>		

ATIS	SALT LAKE CENTER	IDAHO FALLS TOWER *	GND CON	CLNC DEL	GCO	UNICOM
135.325	128.35 239.25	118.5 (CTAF) 0 257.8	121.7	121.7	121.725	122.95



NW-1, 19 MAY 2022 to 16 JUN 2022

NW-1, 19 MAY 2022 to 16 JUN 2022



CATEGORY	A	B	C	D
RNP 0.11 DA		5011/24	276 (300-½)	
RNP 0.30 DA		5120/35	385 (400-¾)	

AUTHORIZATION REQUIRED