

LOC/DME I-TYR 111.95 Chan 56 (Y)	APP CRS 042°	Rwy Idg TDZE Apt Elev	7734 543 544
---	------------------------	-----------------------------	---

ILS or LOC RWY 4

TYLER POUNDS RGNL (TYR)

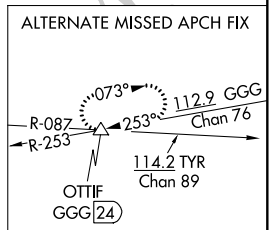
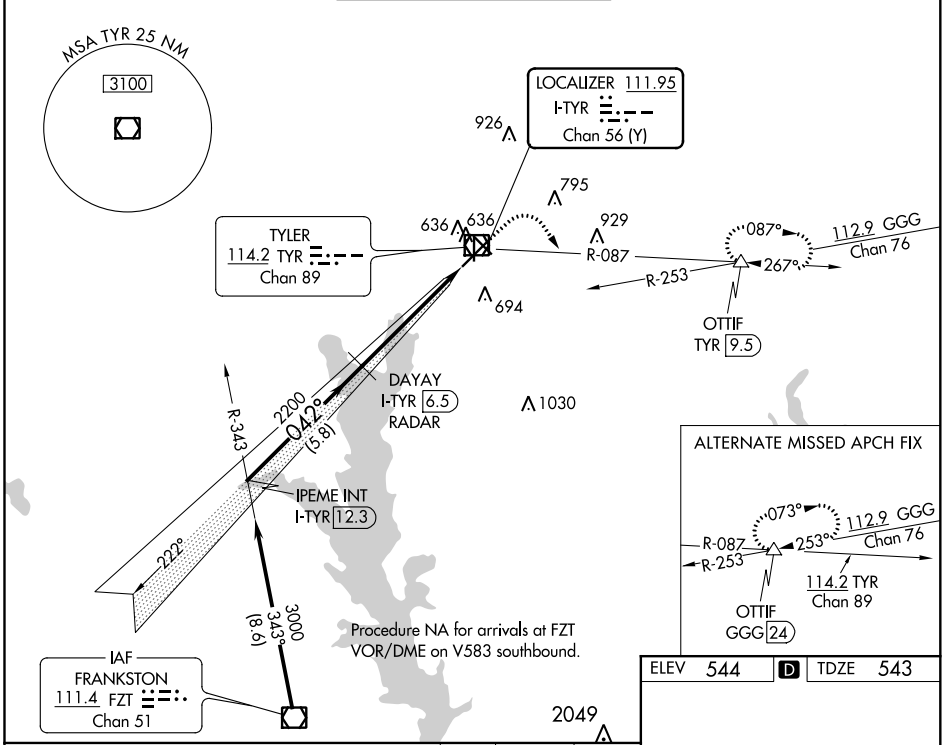
DME required.

▼ Inop table does not apply to S-ILS 4.
▲ For inop ALS increase S-LOC 4 all Cats visibility to 1 SM.

MALSR

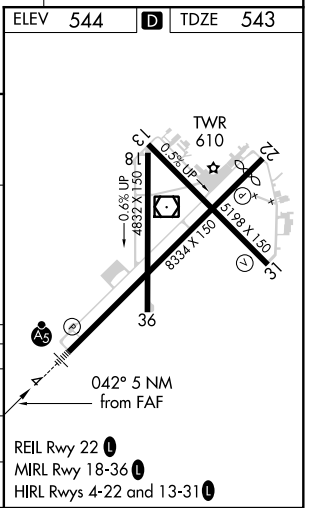
MISSED APPROACH: Climb to 1100 then climbing right turn to 2500 on TYR VOR/DME R-087 to OTTIF/TYR 9.5 DME and hold.

ATIS 126.25	LONGVIEW APP CON ★ 128.75 379.15	POUNDS TOWER ★ 120.1 (CTAF) 257.8	GND CON 121.9	UNICOM 122.95
-----------------------	--	---	-------------------------	-------------------------



Use I-TYR DME when on the localizer course.

	IPEME INT I-TYR 12.3	DAYAY I-TYR 6.5 RADAR	1100	2500	OTTIF
	3000	2200	↑	↑	△
	042°		*I-TYR 2.3	TYR R-087	*LOC only.
	GS 3.00° TCH 54	2200	I-TYR 1.5		
	5.8 NM	4.2 NM	0.8		
CATEGORY	A	B	C	D	
S-ILS 4		743-3/4	200 (200-3/4)		
S-LOC 4		900-3/4	357 (400-3/4)		
CIRCLING	980-1 436 (500-1)	1020-1 476 (500-1)	1160-1 3/4 616 (700-1 3/4)	1280-2 1/4 736 (800-2 1/4)	



SC-2, 19 MAY 2022 to 16 JUN 2022

SC-2, 19 MAY 2022 to 16 JUN 2022