

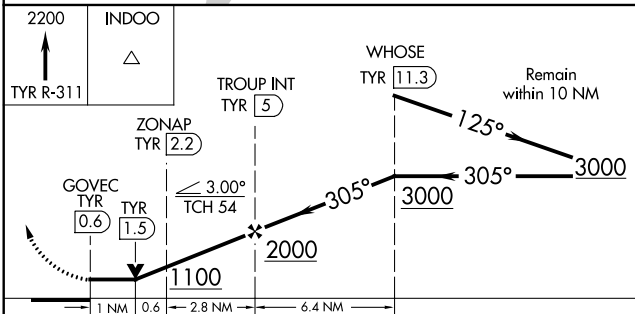
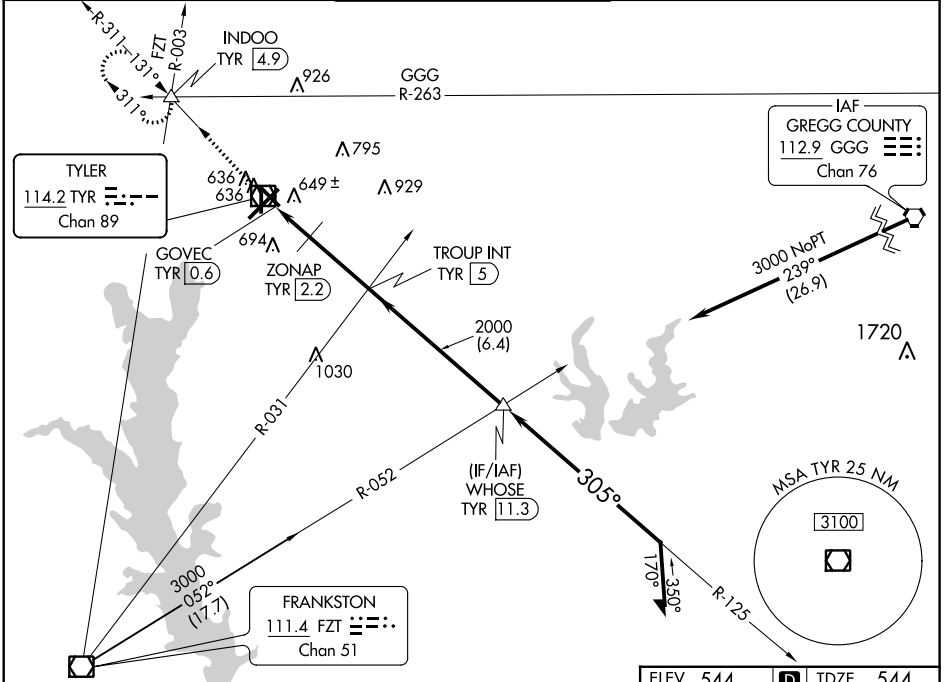
VOR/DME TYR	APP CRS	Rwy Idg TDZE	5198
<b>114.2</b>	<b>305°</b>	Apt Elev	<b>544</b>
Chan 89			

# VOR RWY 31

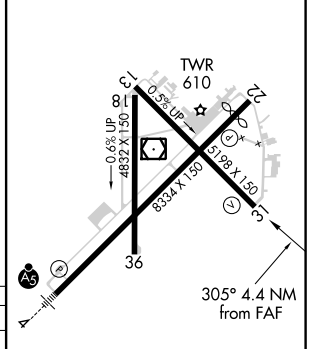
TYLER POUNDS RGNL (TYR)

**▼** Rwy 31 helicopter visibility reduction below 3/4 SM NA. **▲** MISSED APPROACH: Climb to 2200 on TYR VOR/DME R-311 to INDOO INT/4.9 DME and hold.

ATIS <b>126.25</b>	LONGVIEW APP CON★ <b>128.75 379.15</b>	POUNDS TOWER★ <b>120.1 (CTAF) 257.8</b>	GND CON <b>121.9</b>	UNICOM <b>122.95</b>
-----------------------	---	--	-------------------------	-------------------------



ELEV 544 **D** TDZE 544



CATEGORY	A	B	C	D
S-31	1100-1	556 (600-1)	1100-1½	556 (600-1½)
<b>C</b> CIRCLING	1100-1	556 (600-1)	1160-1¾ 616 (700-1¾)	1280-2¼ 736 (800-2¼)
ZONAP FIX MINIMUMS (DME REQUIRED)				
S-31	900-1 356 (400-1)			
<b>C</b> CIRCLING	980-1 436 (500-1)	1020-1 476 (500-1)	1160-1¾ 616 (700-1¾)	1280-2¼ 736 (800-2¼)

REIL Rwy 22 <b>1</b>	FAF to MAP 4.4 NM
MIRL Rwy 18-36 <b>1</b>	
HIRL Rwy 4-22 and 13-31 <b>1</b>	
Knots	60 90 120 150 180
Min:Sec	4:24 2:56 2:12 1:46 1:28

SC-2, 19 MAY 2022 to 16 JUN 2022

SC-2, 19 MAY 2022 to 16 JUN 2022