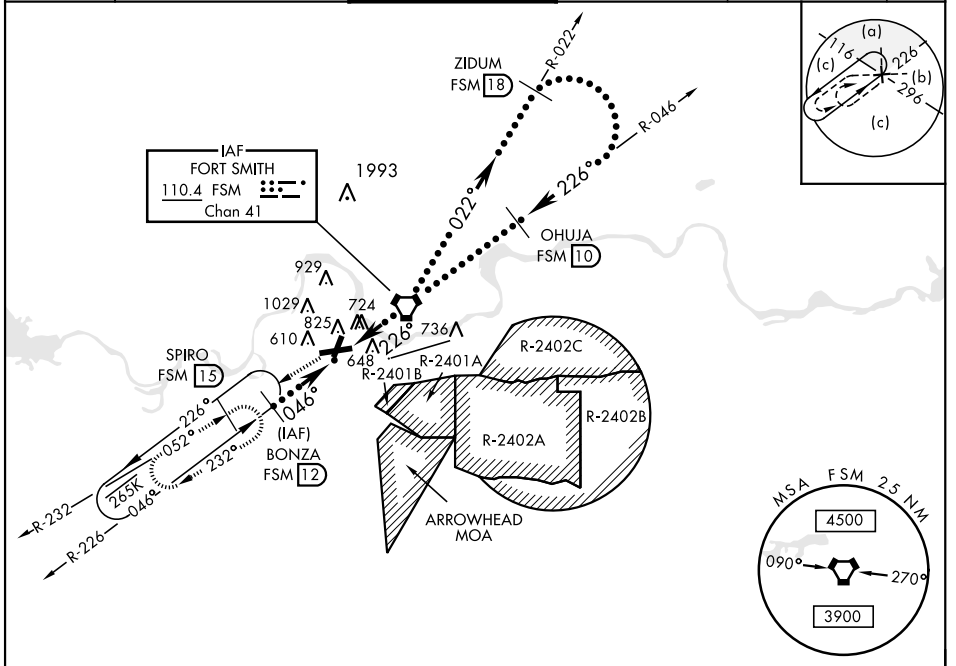


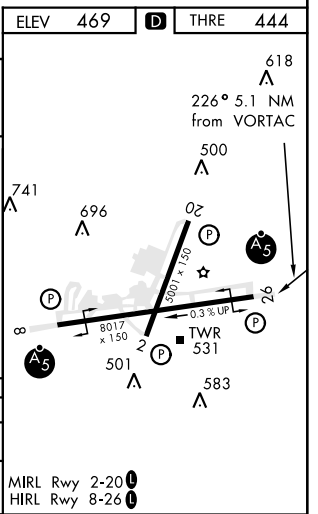
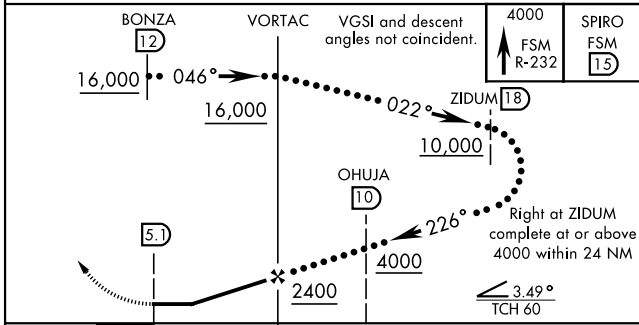
# HI-VOR/DME or TACAN RWY 25

VORTAC FSM <b>110.4</b> Chan <b>41</b>	APCH CRS <b>226°</b>	Rwy Idg <b>8017</b> THRE <b>444</b> Arprt Elev <b>469</b>	AL-631 [USAF]	FORT SMITH RGNL (KF5M)	MALSR 	MISSED APPROACH: Climb to 4000 on FSM VORTAC R-232 to SPIRO (FSM R-232/15 DME) and hold, continue climb in hold to 4000.
--	-------------------------	---	---------------	------------------------	-----------	--

ATIS <b>126.3</b>	RAZORBACK APP CON <b>120.9 343.75</b>	TOWER ★ <b>118.3 (CTAF) 323.175</b>	GND CON <b>121.9 275.8</b>	CLNC DEL <b>133.85 278.3</b>	ASR
----------------------	--	--	-------------------------------	---------------------------------	-----



EMERG SAFE ALT 100 NM 4500



CATEGORY	C	D	E
S-25	980-1½	536 (600-1½)	
CIRCLING *	1140-2 671 (700-2)	1140-2¼ 671 (700-2¼)	1260-2¾ 791 (800-2¾)

# HI-VOR/DME or TACAN RWY 25

SC-1, 19 MAY 2022 to 16 JUN 2022

SC-1, 19 MAY 2022 to 16 JUN 2022