

FORT SMITH, ARKANSAS

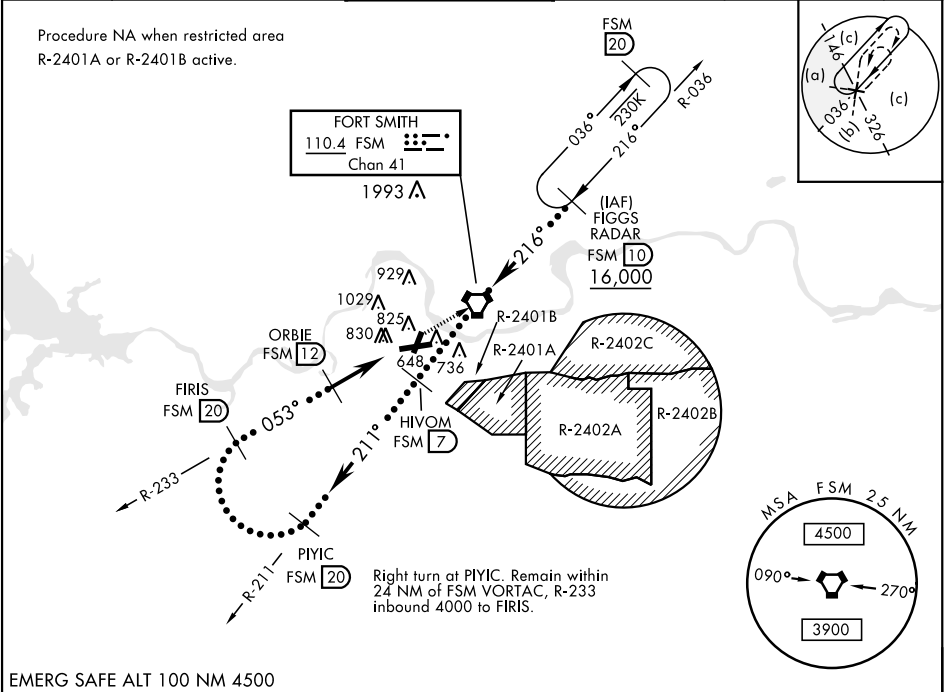
HI-VOR/DME or TACAN RWY 7

VORTAC FSM 110.4 Chan 41	APCH CRS 053°	Rwy ldg TDZE 469 Arpt Elev 469	AL-631 [USAF]	FORT SMITH RGNL (KF5M)
--	-------------------------	--	---------------	------------------------

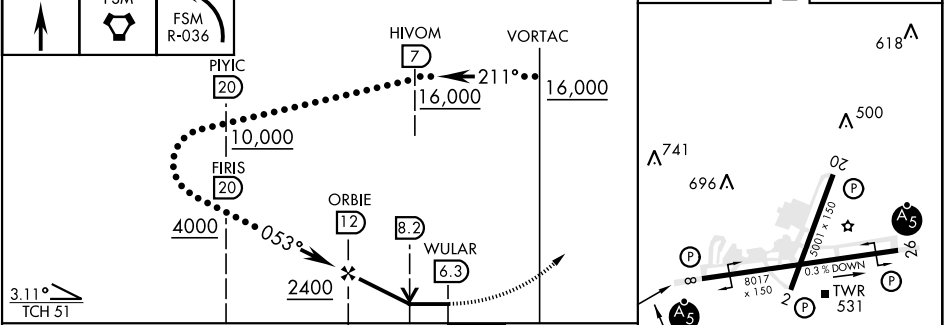
M * Circling NA NW Rwy 7 and 19 for CAT E.
Circling to Rwy 1 NA at night.

MALSRS MISSED APPROACH: Climb to 4000 direct FSM VORTAC and on R-036 to FIGGS (FSM R-036/10 DME) and hold.

ATIS 126.3	RAZORBACK APP CON 120.9 343.75	TOWER * 118.3 (CTAF) 323.175	GND CON 121.9 275.8	CLNC DEL 133.85 278.3	ASR
----------------------	--	---	-------------------------------	---------------------------------	-----



EMERG SAFE ALT 100 NM 4500



CATEGORY	C	D	E	ELEV 469 D TDZE 469
S-7	1120-1 $\frac{1}{8}$	651 (700-1 $\frac{1}{8}$)		
CIRCLING *	1140-2 671 (700-2)	1140-2 $\frac{1}{4}$ 671 (700-2 $\frac{1}{4}$)	1260-2 $\frac{3}{4}$ 791 (800-2 $\frac{3}{4}$)	MIRL Rwy 2-20 ! HIRL Rwy 8-26 !

FORT SMITH, ARKANSAS 35°20'N-94°22'W FORT SMITH RGNL (KF5M)

HI-VOR/DME or TACAN RWY 7

SC-1, 19 MAY 2022 to 16 JUN 2022

SC-1, 19 MAY 2022 to 16 JUN 2022