


LOC I-GKV 111.3	APP CRS 080°	Rwy ldg TDZE Apt Elev	8017 469 469
---------------------------	------------------------	-----------------------------	---

ILS or LOC RWY 8

FORT SMITH RGNL (FSM)

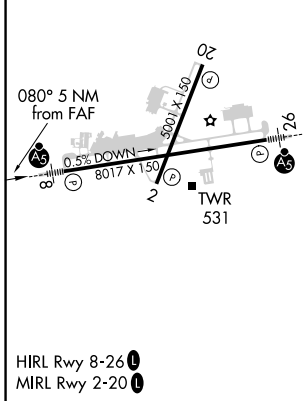
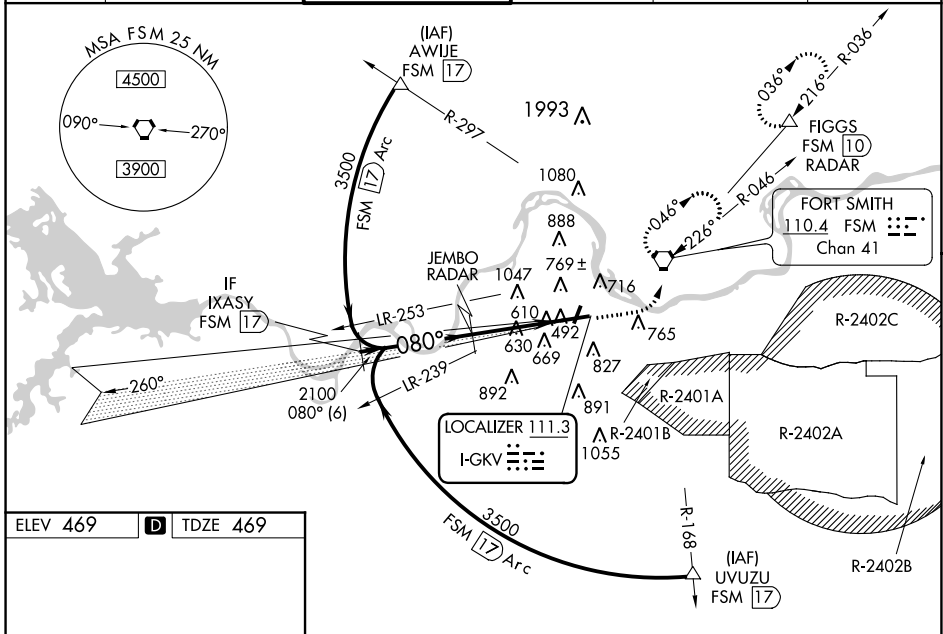
DME and RADAR required.

ASR Circling NA for Cat E north of Rwy 8 and west of Rwy 20. Circling Rwy 20 and 26 NA at night. For inop ALS, increase S-ILS 8 Cat E visibility to 3/4 SM, increase S-LOC 8, Cat C/D/E visibility to 1/2 SM. DME from FSM VORTAC. DME use requires simultaneous reception of I-GKV and FSM VORTAC DME. Circling NA for Cat E when restricted area R-2401B active.

MALSR 

MISSED APPROACH: Climb to 1000 then climbing left turn to 3000 direct FSM VORTAC and hold, continue climb-in-hold to 3000. (TACAN aircraft continue climb to 4000 on FSM VORTAC R-036 to FIGGS/FSM VORTAC 10 DME/RADAR and hold northeast right turn 216° inbound, continue climb-in-hold to 4000.)

ATIS 126.3	RAZORBACK APP CON ★ 120.9 343.75	FORT SMITH TOWER ★ 118.3 (CTAF) 323.175	GND CON 121.9 275.8	CLNC DEL 133.85 278.3	UNICOM 122.95
----------------------	--	---	-------------------------------	---------------------------------	-------------------------



ELEV 469	D	TDZE 469			
GS 3.00°	TCH 52				
CATEGORY	A	B	C	D	E
S-ILS 8	719-1/2		250 (300-1/2)		
S-LOC 8	880-1/2 411 (500-1/2)		880-3/4 411 (500-3/4)		
C CIRCLING	1140-1 671 (700-1)		1400-2 3/4 931 (1000-2 3/4)		1400-3 931 (1000-3)

SC-1, 19 MAY 2022 to 16 JUN 2022

SC-1, 19 MAY 2022 to 16 JUN 2022