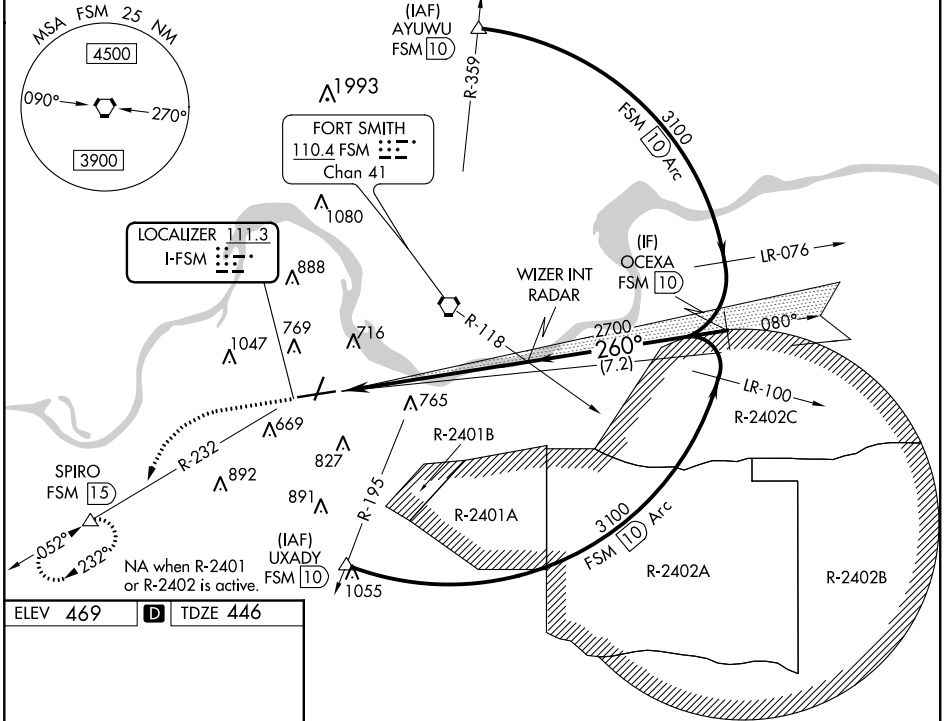


LOC I-FSM 111.3	APP CRS 260°	Rwy Idg TDZE Apt Elev	8017 446 469
---------------------------	------------------------	-----------------------------	---

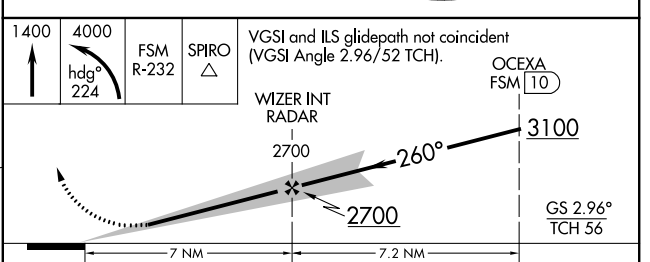
ILS Z or LOC Z RWY 26

FORT SMITH RGNL (FSM)

DME required.		MALS R	MISSED APPROACH: Climb to 1400 then climbing left turn to 4000 on heading 224° and FSM VORTAC R-232 to SPIRO/FSM 15 DME and hold, continue climb-in-hold to 4000.		
<p>▽ Circling NA for Cat E when R-2401B active. Circling NA for Cat E north of Rwy 8 and west of Rwy 20. For inop ALS, increase S-ILS 26 Cat E visibility to RVR 4000 and S-LOC 26 Cat C/D/E to 1½ SM. Circling Rwy 20, 26 NA at night.</p> <p>⚠ ASR</p>					
ATIS 126.3	RAZORBACK APP CON* 120.9 343.75	FORT SMITH TOWER* 118.3 (CTAF) 0 323.175	GND CON 121.9 275.8	CLNC DEL 133.85 278.3	UNICOM 122.95



ELEV 469	D	TDZE 446
HIRL Rwy 8-26	MIRL Rwy 2-20	
FAF to MAP 7 NM		
Knots	60	90 120 150 180
Min:Sec	7:00	4:40 3:30 2:48 2:20



CATEGORY	A	B	C	D	E
S-ILS 26	653/24 207 (200-½)				
S-LOC 26	1020/24	574 (600-½)	1020-1¼ 574 (600-1¼)		
<input checked="" type="checkbox"/> CIRCLING	1140-1 671 (700-1)		1400-2¾ 931 (1000-2¾)	1400-3 931 (1000-3)	

SC-1, 19 MAY 2022 to 16 JUN 2022

SC-1, 19 MAY 2022 to 16 JUN 2022