

WAAS CH <b>87117</b> <b>W26A</b>	APP CRS <b>260°</b>	Rwy Idg TDZE Apt Elev	<b>8017</b> <b>446</b> <b>469</b>
--	------------------------	-----------------------------	---

# RNAV (GPS) RWY 26

FORT SMITH RGNL (F<sup>SM</sup>)

RNP APCH - GPS.

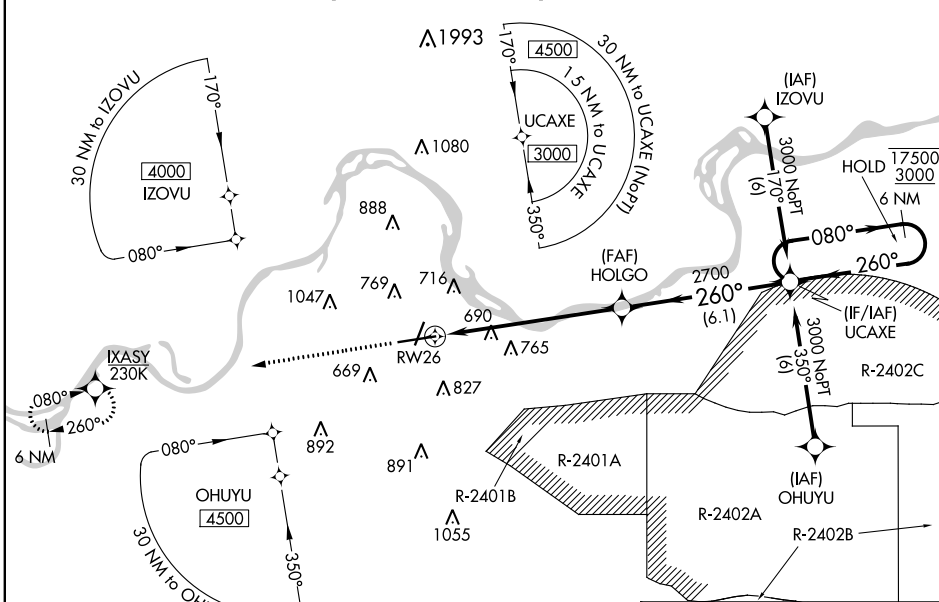
Inop table does not apply to LPV all Cats. For uncompensated Baro-VNAV systems, LNAV/VNAV NA below -15°C or above 54°C. Circling Cat E NA when R-2401B active. For inop ALS, increase LNAV Cat A/B visibility to Rvr 5000, LNAV/VNAV and LNAV Cat E visibility to 1¾. NA for Cat E north of Rwy 8 and west of Rwy 20. Circling Rwy 20, 26 NA at night.

MALSR



MISSED APPROACH:  
Climb to 3000 direct  
IXASY and hold.

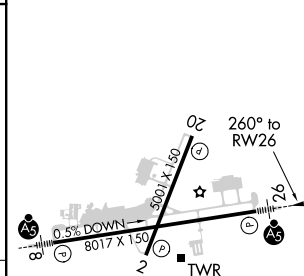
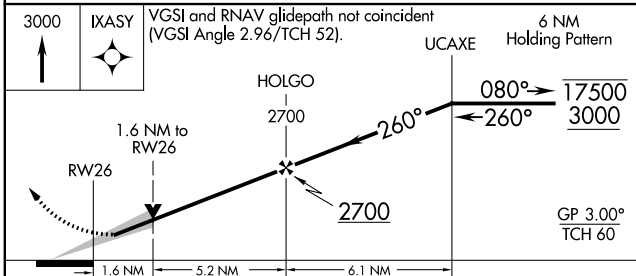
ATIS <b>126.3</b>	RAZORBACK APP CON * <b>120.9 343.75</b>	FORT SMITH TOWER * <b>118.3 (CTAF) 0 323.175</b>	GND CON <b>121.9 275.8</b>	CLNC DEL <b>133.85 278.3</b>	UNICOM <b>122.95</b>
----------------------	--	---	-------------------------------	---------------------------------	-------------------------



SC-1, 19 MAY 2022 to 16 JUN 2022

SC-1, 19 MAY 2022 to 16 JUN 2022

ELEV 469	<b>D</b> TDZE 446
----------	-------------------



CATEGORY	A	B	C	D	E
LPV DA	653/40 207 (200-¾)				
LNAV/VNAV DA	979/60 533 (600-1¼)				
LNAV MDA	980/40 534 (600-¾)	980/50 534 (600-1)	980/60 534 (600-1¼)		
<b>C</b> CIRCLING	1140-1 671 (700-1)	1400-2¾ 931 (1000-2¾)	1400-3 931 (1000-3)		

HIRL Rwy 8-26 **0**  
MIRL Rwy 2-20 **0**