

WAAS CH <b>77917</b> <b>W08A</b>	APP CRS <b>080°</b>	Rwy Idg TDZE Apt Elev	<b>8017</b> <b>469</b> <b>469</b>
--	------------------------	-----------------------------	---

# RNAV (GPS) RWY 8

FORT SMITH RGNL (F'SM)

RNP APCH - GPS.

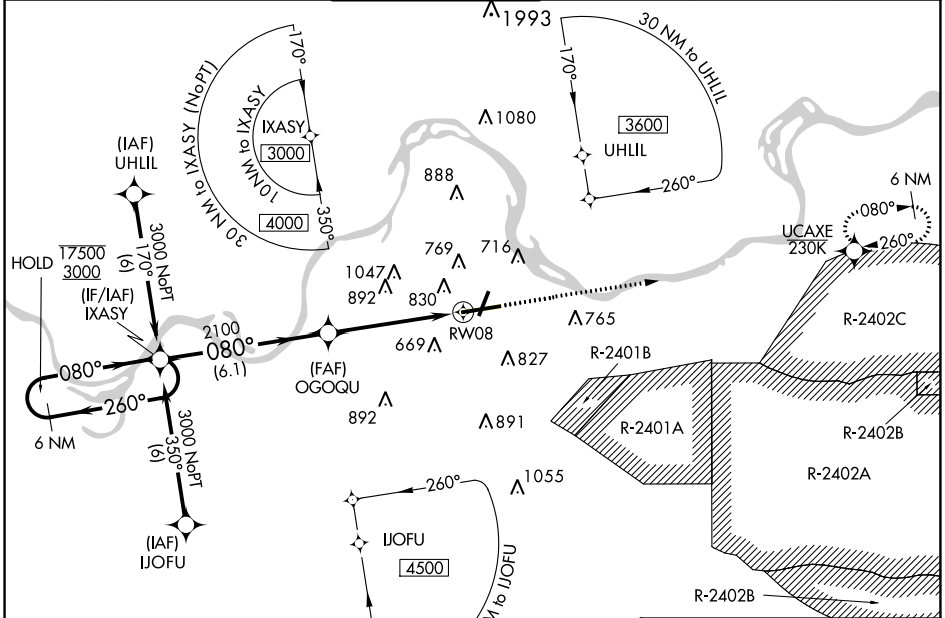
**⚠** Circling to Rwy 20 and 26 NA at night. For uncompensated Baro-VNAV systems, LNAV/VNAV NA below -15°C or above 53°C. For inop ALS, increase LPV Cat E visibility to 3/4 SM, LNAV/VNAV Cat E visibility to 2 1/2 SM and LNAV Cat E visibility to 2 1/2 SM. Circling NA for Cat E when Restricted Area R-2401B active.

MALSR



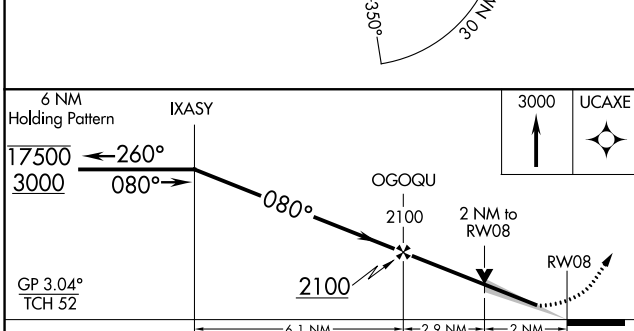
**MISSED APPROACH:**  
Climb to 3000 direct UCAXE and hold.

ATIS <b>126.3</b>	RAZORBACK APP CON * <b>120.9 343.75</b>	FORT SMITH TOWER * <b>118.3 (CTAF) 323.175</b>	GND CON <b>121.9 275.8</b>	CLNC DEL <b>133.85 278.3</b>	UNICOM <b>122.95</b>
----------------------	--	---	-------------------------------	---------------------------------	-------------------------



SC-1, 19 MAY 2022 to 16 JUN 2022

SC-1, 19 MAY 2022 to 16 JUN 2022



ELEV 469	<b>D</b> TDZE 469
----------	-------------------

CATEGORY	A	B	C	D	E
LPV DA		669-1/2	200 (200-1/2)		
LNAV/VNAV DA		1085-13/8	616 (700-13/8)		
LNAV MDA	1140-1/2 671 (700-1/2)		1140-1 671 (700-1)		
<b>C</b> CIRCLING	1140-1 671 (700-1)		1400-2 3/4 931 (1000-2 3/4)	1400-3 931 (1000-3)	

